



Who is the

Syracuse Metropolitan Transportation Council?

The SMTC is the Syracuse region's Metropolitan Planning Organization (MPO)

Metropolitan Planning Organizations (MPO)

A Metropolitan Planning Organization (MPO) is a transportation policy-making and planning body made up of representatives of local, state, and federal government and transportation authorities.

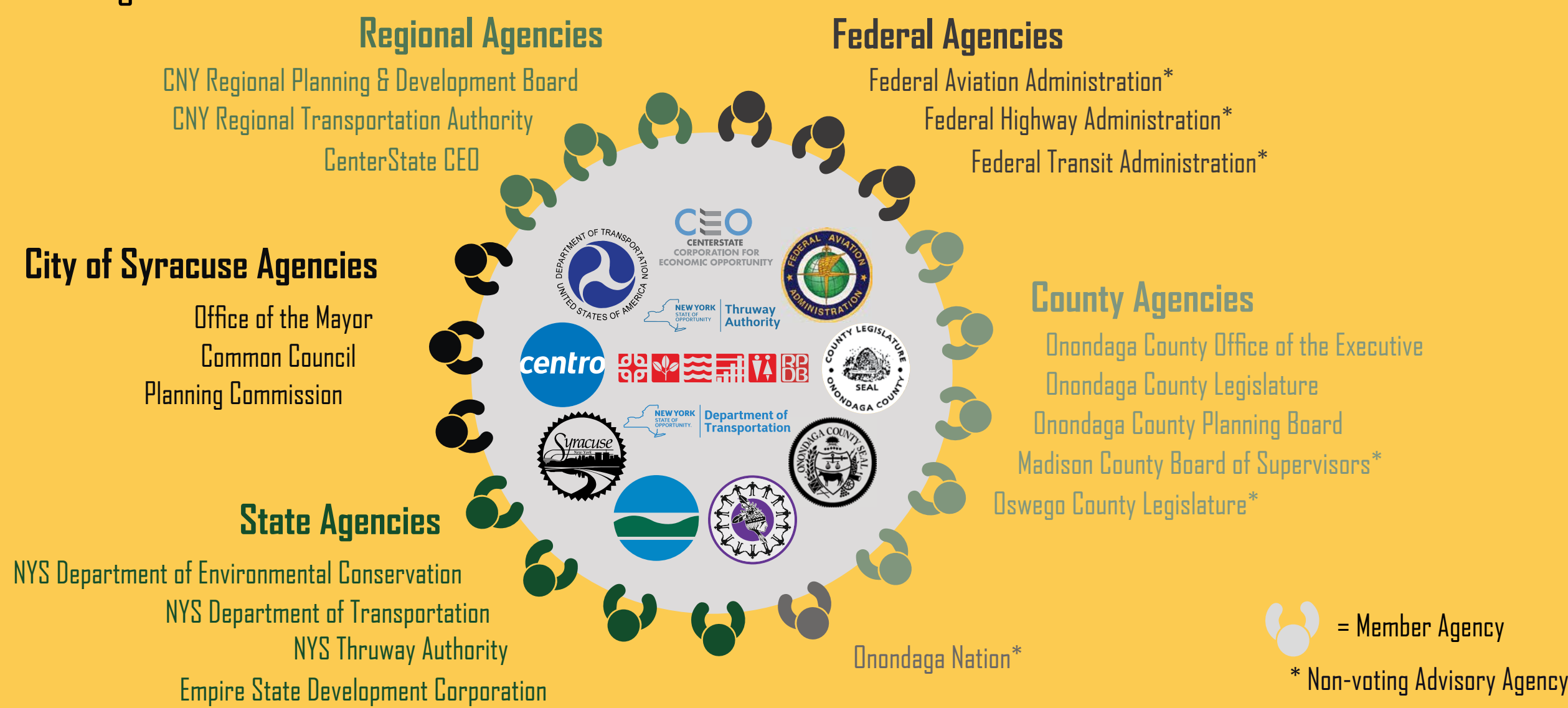
The Policy Committee is the designated MPO.

The MPO is charged with the **comprehensive, cooperative, and continuous transportation planning process** for a metropolitan area.

Member Agencies



The SMTC Member Agencies are a collection of federal, state, regional, county, and city representatives. Both elected officials and municipal staff serve on the various SMTC committees. The Policy Committee is the designated MPO and includes 13 voting members and 6 non-voting members.



Staff to the SMTC

Director
Planners
Analysts

Where is the SMTC's planning area?

Onondaga County

All towns, villages, and the City of Syracuse

Madison County

Town of Sullivan, Village of Chittenango

Oswego County

Towns of Hastings, Schroepfel, West Monroe, and a small portion of the Town of Granby, and Villages of Phoenix and Central Square

Comprehensive Transportation Planning

More than just cars and roads, the SMTC is tasked with **comprehensive** planning. That includes:

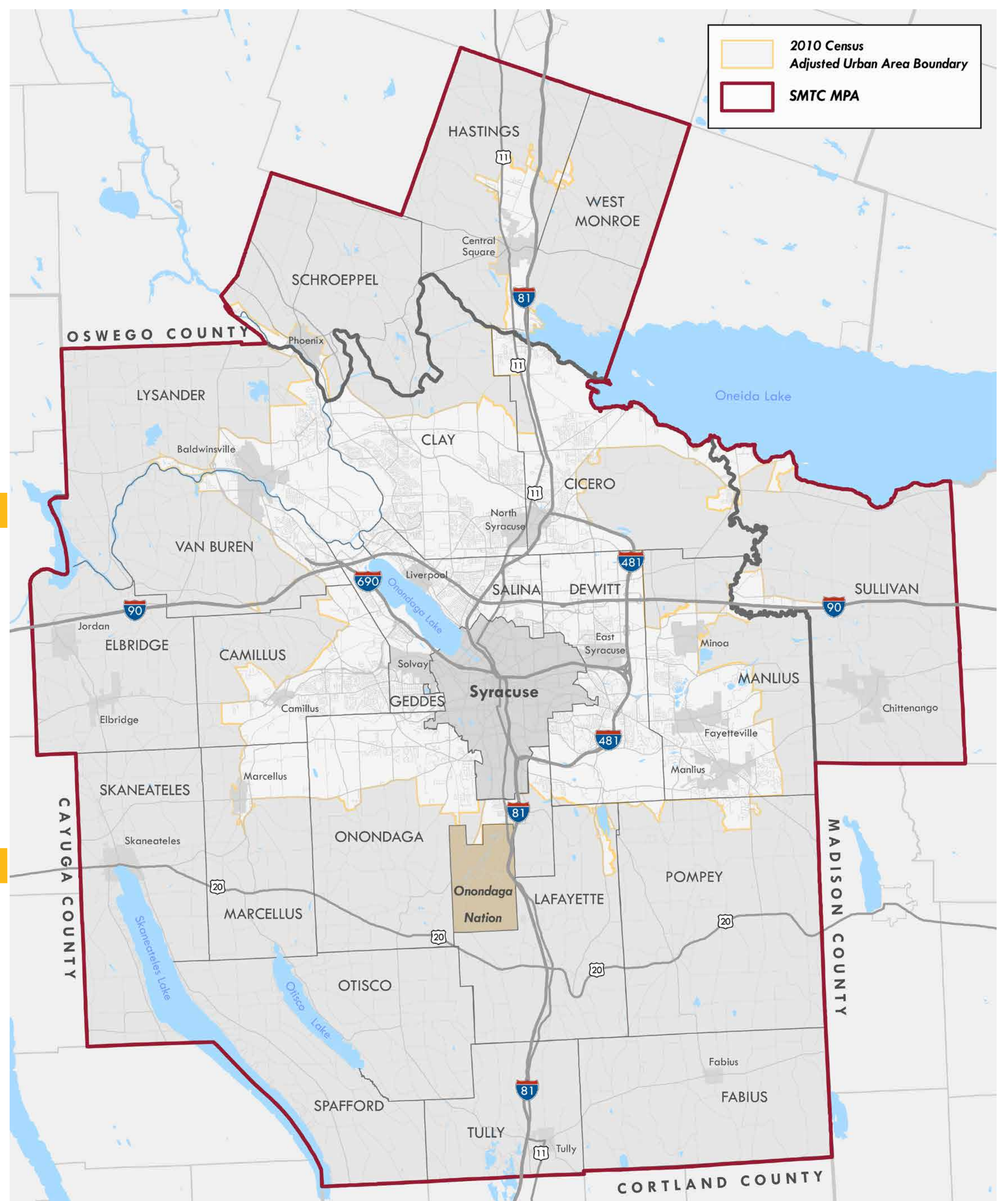
- Walking
- Bicycling
- Driving
- Transit
- Rail
- Freight

Cooperative Transportation Planning

The SMTC does not own any transportation infrastructure, but instead makes recommendations to our member agencies who do.

Recommendations are based on input from:

- The coordination of federal, state, and local agencies, and
- Community members, through our public participation process, like the workshop you are attending today!



The SMTC practices

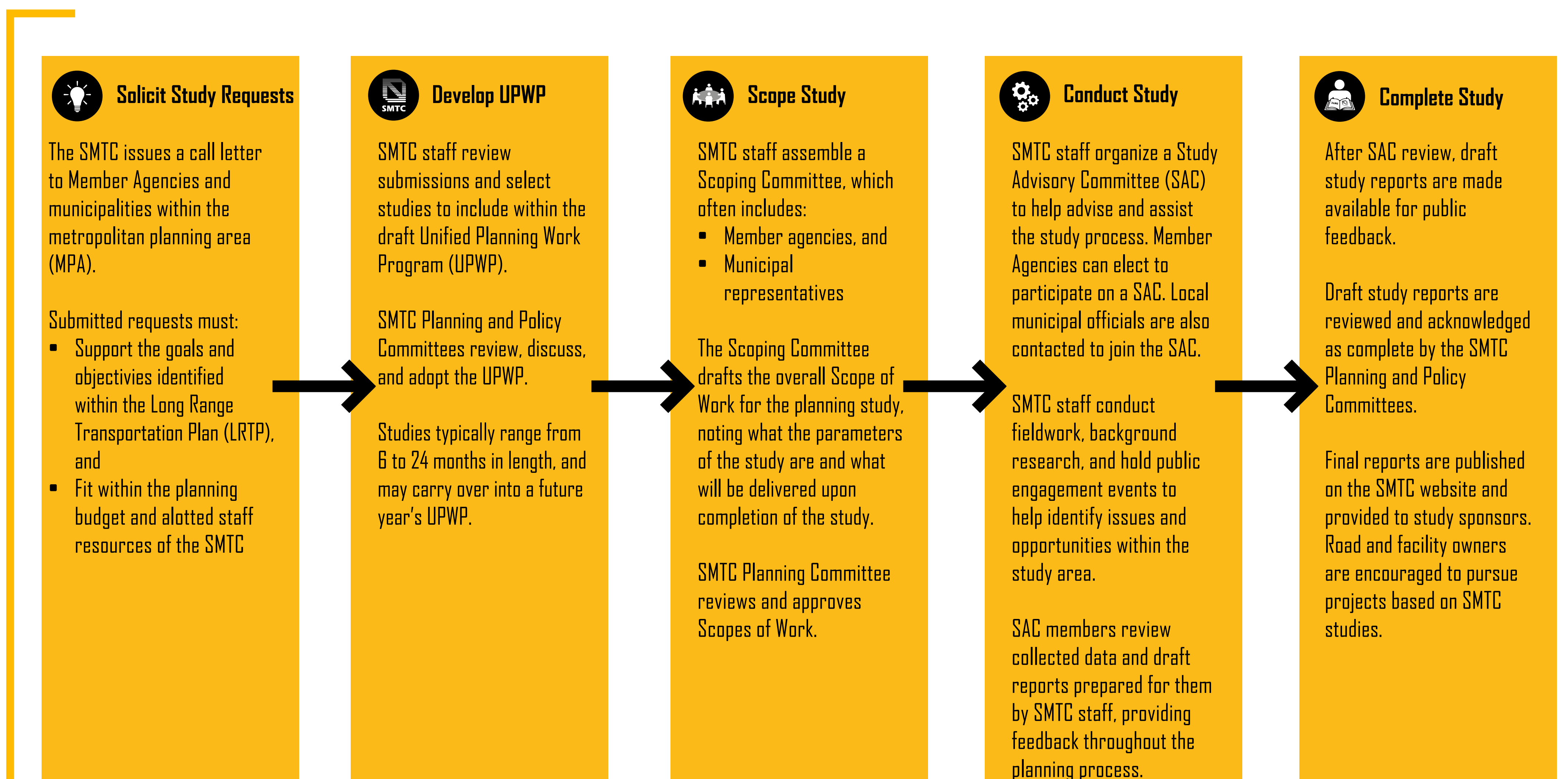
Continuous Transportation Planning



SMTC Planning Studies

The SMTC receives federal funds in order to complete transportation planning studies within our Metropolitan Planning Area. These funds can only be used for planning purposes and cannot be repurposed for capital projects.

Every year, the SMTC sends a letter to member agencies and local municipalities requesting study ideas based on issues and opportunities identified within their boundaries for the next fiscal year's Unified Planning Work Program (UPWP). The below flow chart provides a brief overview of the life of a planning study.



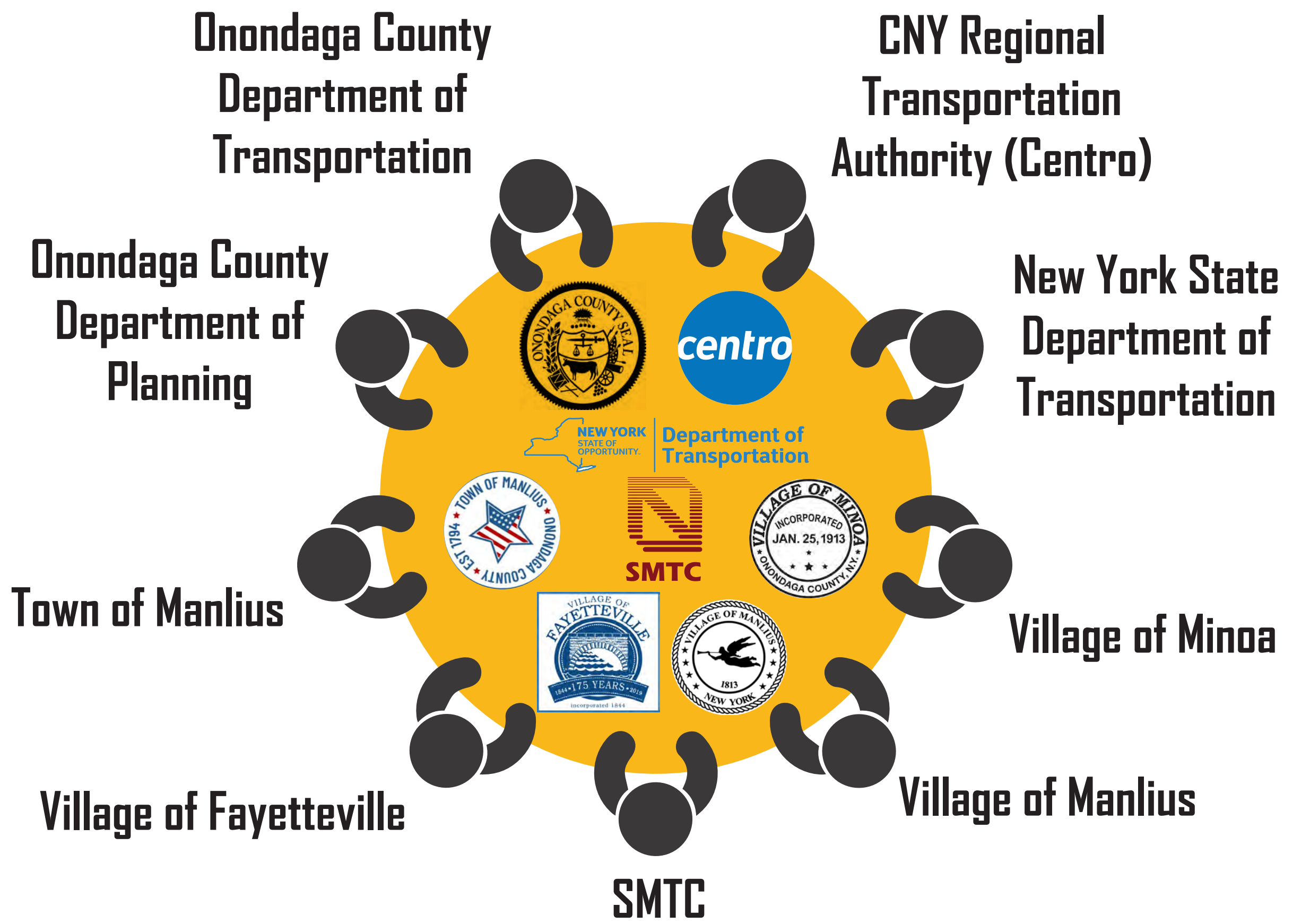
Villages of Minoa, Fayetteville, and Manlius Bicycle & Pedestrian Connections Study

On behalf of the Village of Fayetteville

Study Advisory Committee Member Agencies

The Village of Fayetteville requested that the Syracuse Metropolitan Transportation Council (SMTC) conduct a planning level study of the mobility needs and opportunities in the Greater Fayetteville area. SMTC planning studies conducted on behalf of municipalities within the Metropolitan Planning Area (MPA) are funded through federal planning funds, with no direct local cost.

A study advisory committee (SAC) was formed to help advise and assist SMTC staff in the planning study process. SAC members volunteered to participate in the planning process and included elected officials, public agency staff, and the CNY Regional Transportation Authority (Centro).



Study Purpose: Strengthen the bike and pedestrian network, connections, and facilities throughout the 3 villages



In Fayetteville's study application, the Village stated "bicycle and pedestrian safety is compromised on a daily basis" along the study area corridors.

Based on the Village's application, SMTC staff developed a scope of work aimed at addressing the issues along study area corridors along with improving connections into surrounding parks, trails, and destinations. The scope of work was approved by the SMTC Planning Committee in May 2023, which formally kicked off the planning process.



Study Goals:

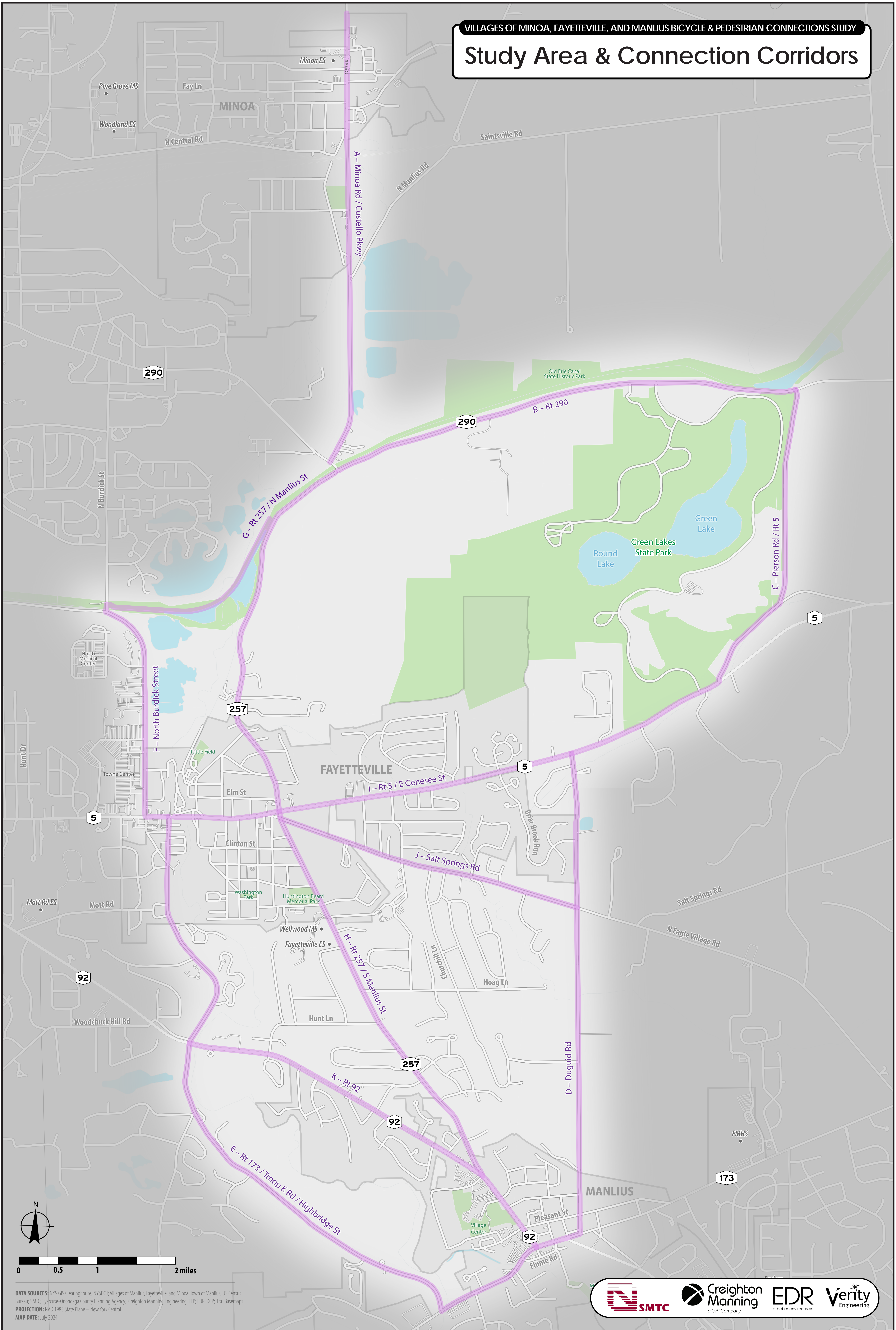
- Identify locations for safe on-road bicycle routes that will connect residents to neighboring parks, trails, and specifically the Villages of Fayetteville, Manlius, and Minoa.
- Encourage a process that is open and transparent, includes public involvement opportunities, and promotes multi-jurisdictional planning.

Project consultants:

In August of 2023, SMTC hired consultant, Creighton Manning, and subconsultants, Environmental Design & Research (EDR) and Verity Engineering, to conduct the study.



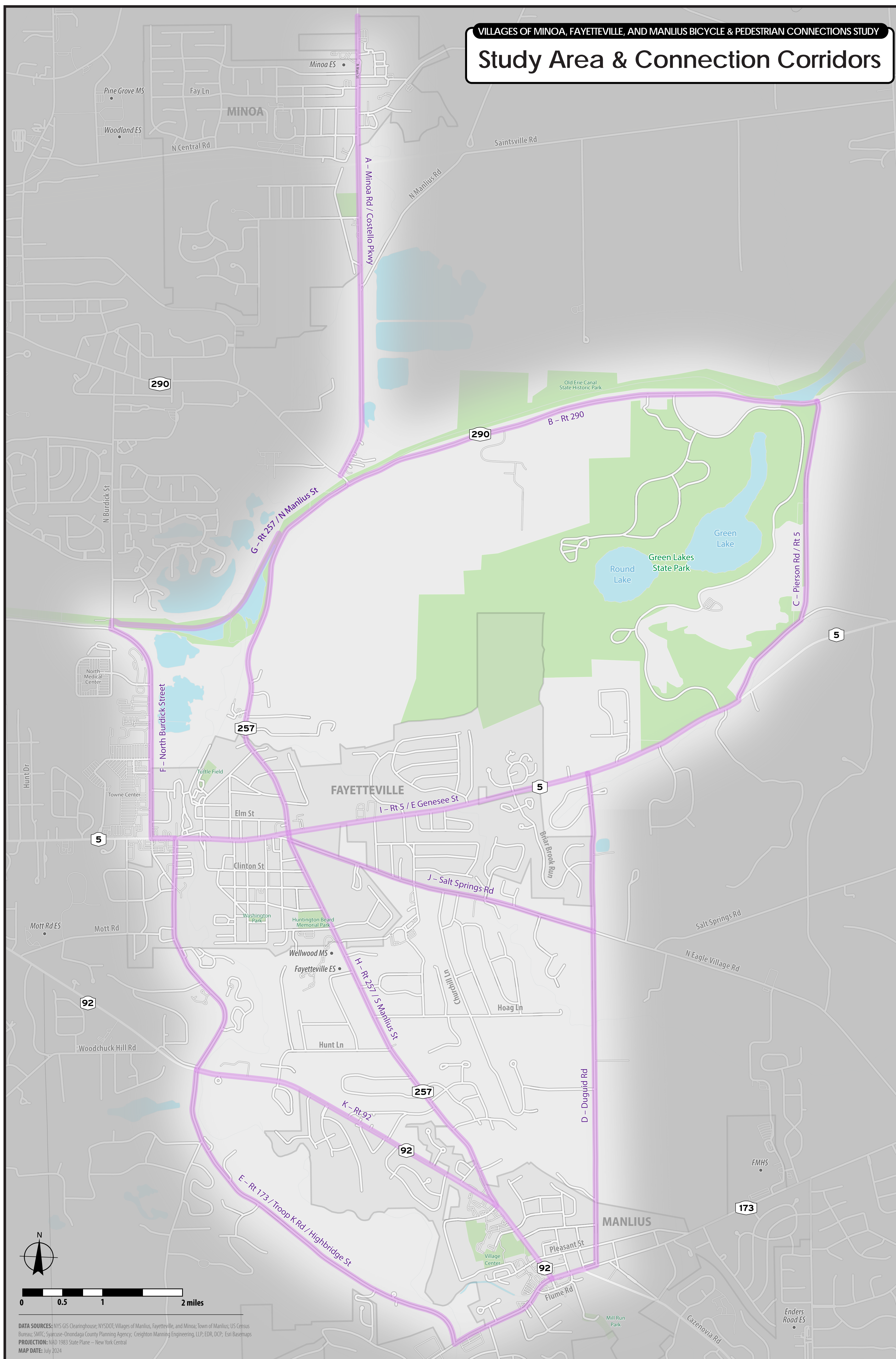
Study Area & Connection Corridors



DATA SOURCES: NYS GIS Clearinghouse; NYSDOT; Villages of Manlius, Fayetteville, and Minoa; Town of Manlius; US Census Bureau; SMTc; Syracuse-Onondaga County Planning Agency; Creighton Manning Engineering, LLP; EDR, DCP; Esri Basemaps
PROJECTION: NAD 1983 State Plane - New York Central
MAP DATE: July 2024

Introduction & Overview

VILLAGES OF MINOA, FAYETTEVILLE, AND MANLIUS BICYCLE & PEDESTRIAN CONNECTIONS STUDY
Study Area & Connection Corridors

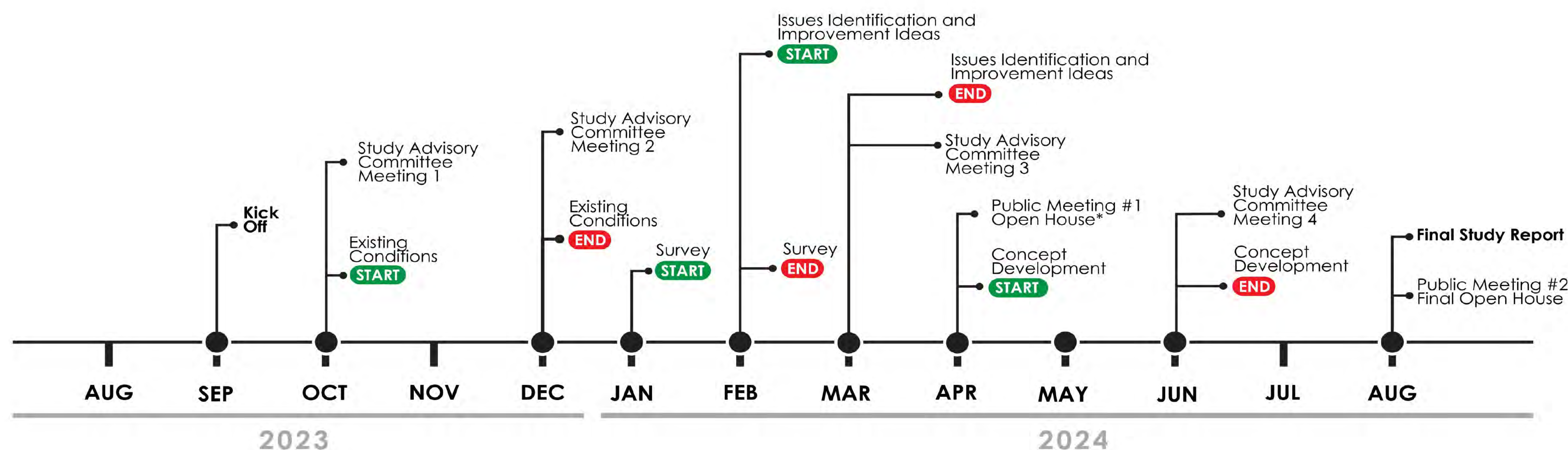


STUDY OVERVIEW: The Syracuse Metropolitan Transportation Council (SMTC), on behalf of its municipal partners, wants to build on recent planning efforts (local and regional) which relate to pedestrian and bicycle accommodations. Specifically, they are interested in connections that link the **villages of Minoa, Fayetteville, and Manlius** to each other, as well as to neighboring parks and trails in the area, including, the Empire State Trail system, Mill Run Park, and Green Lakes State Park. The study area consists of: North Burdick Street, East Genesee Street, Route 290, Pierson Road, NYS Route 5, Duguid Road, Route 173, and Troop K Road, and Highbridge Street; spur that will run to the Village of Minoa via Minoa Road Connections to the front (NYS Route 5) and rear entrance (Route 290) to Green Lakes State Park.

STUDY DETAILS: SMTC is working with a Study Advisory Committee to help inform the work. An online survey was conducted to gather information from members of these communities on their current walking and biking trips and which corridors were preferred. Existing conditions data along the identified corridors was gathered and issues were noted.

STUDY GOALS: Provide detailed, site-specific recommendations for bicycle and pedestrian facilities along the most appropriate roadways to strengthen and increase the safety of bicycle connections from local parks and trails to the village of Minoa, Fayetteville, and Manlius as well as increase the number of bicycle commuter trips through the villages of Fayetteville and Manlius.

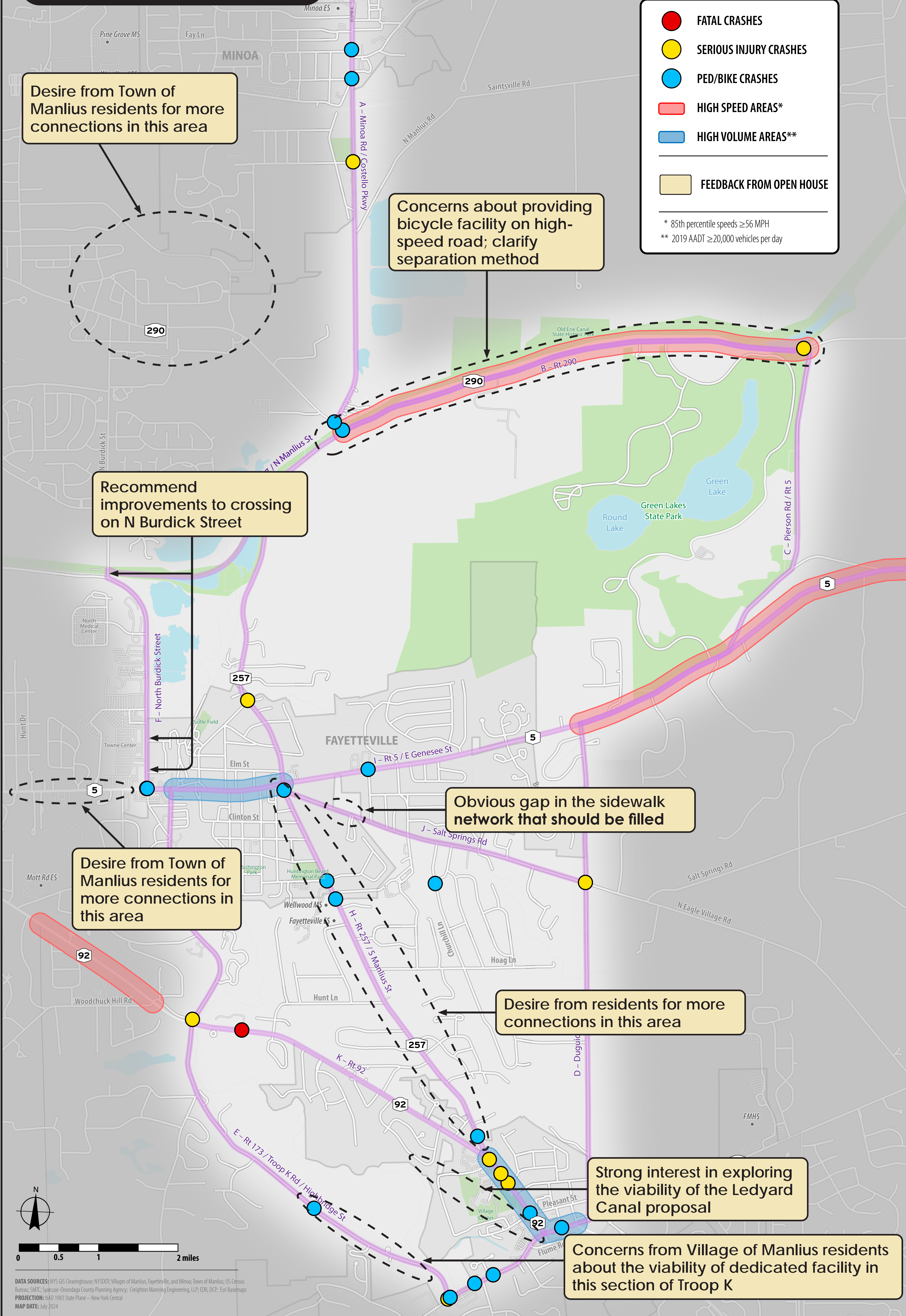
PROJECT TIMELINE



DATA SOURCES: NYS GIS Clearinghouse; NYSDOT; Villages of Manlius, Fayetteville, and Minoa; Town of Manlius, NY Edition; Bureau of State Planning; Creighton Manning Engineering, LLP; ENR, LLC; East Baughman
PRODUCTION: 10/13/2023 State Plane - New York Central
MAP DATE: July 2024

Public Feedback

IDENTIFIED ISSUES



SURVEY SUMMARY



356 responses

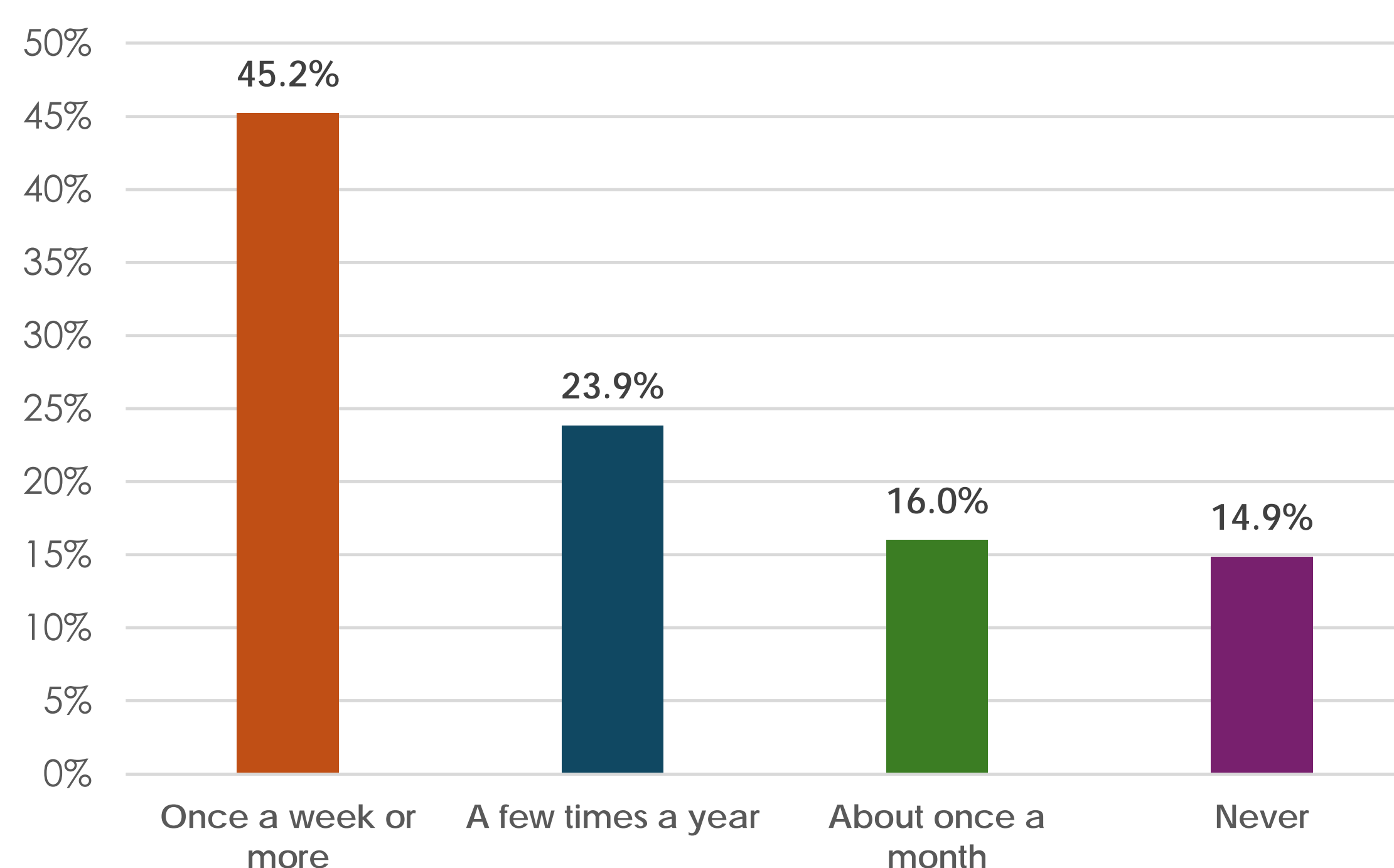


Open from Jan 22 - Feb 12, 2024

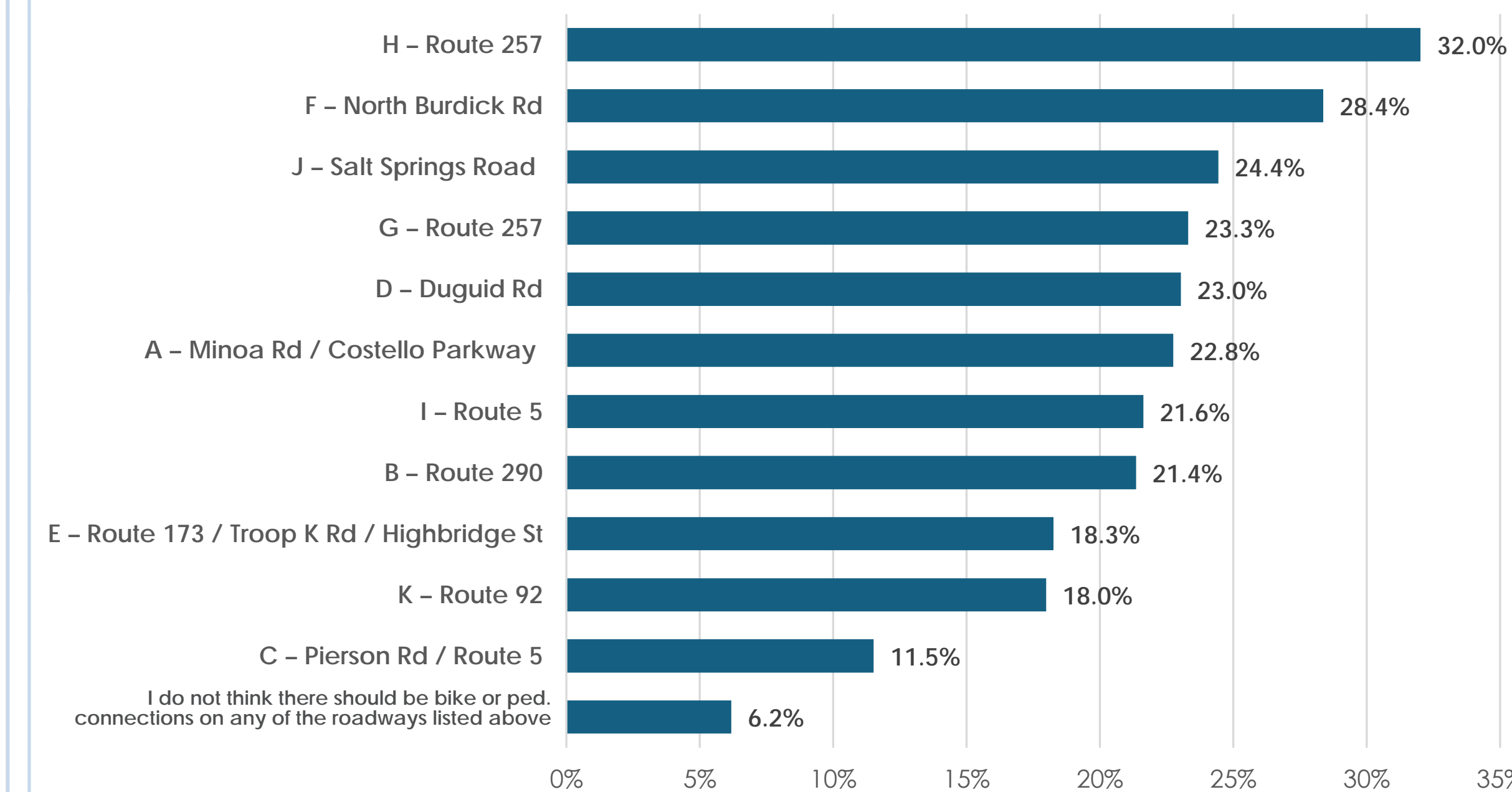


Over 90% of respondents are from Manlius or the three villages

Do you ever walk or bike for short trips (less than 3 miles) from your home to destinations like stores, parks, school, etc.?



Select the three (3) roadways that you would like to see enhanced to support better bicycle and pedestrian connections in this area. This could include bike lanes, sidewalks, crosswalks, or other dedicated infrastructure.



OPEN HOUSE SUMMARY



47 attendees

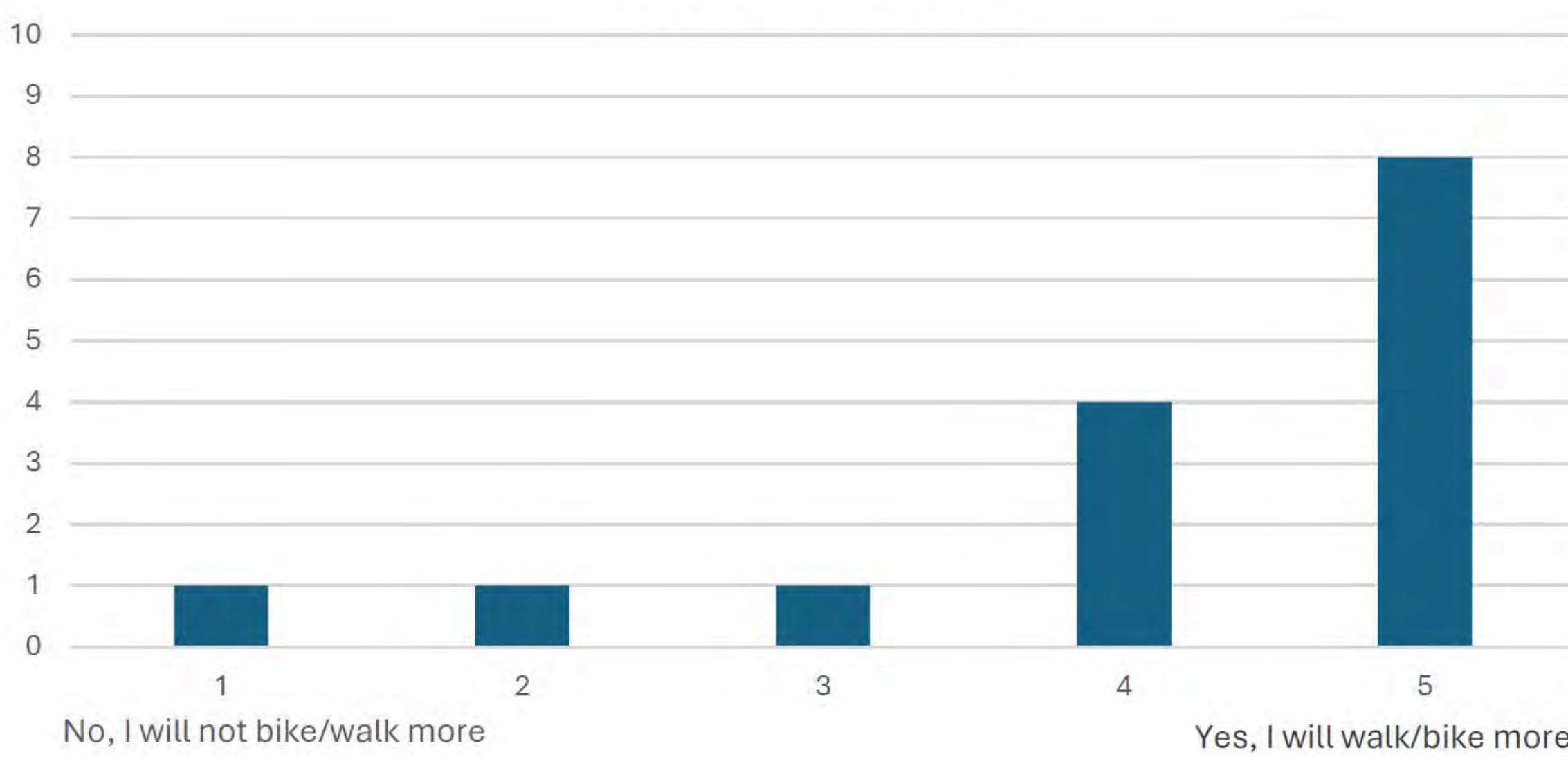


Meeting held April 11, 2024



15 comment forms received; additional feedback emailed post-meeting

Do you feel that your current behavior will change because of the proposed treatments to provide better pedestrian and bicycle connectivity?

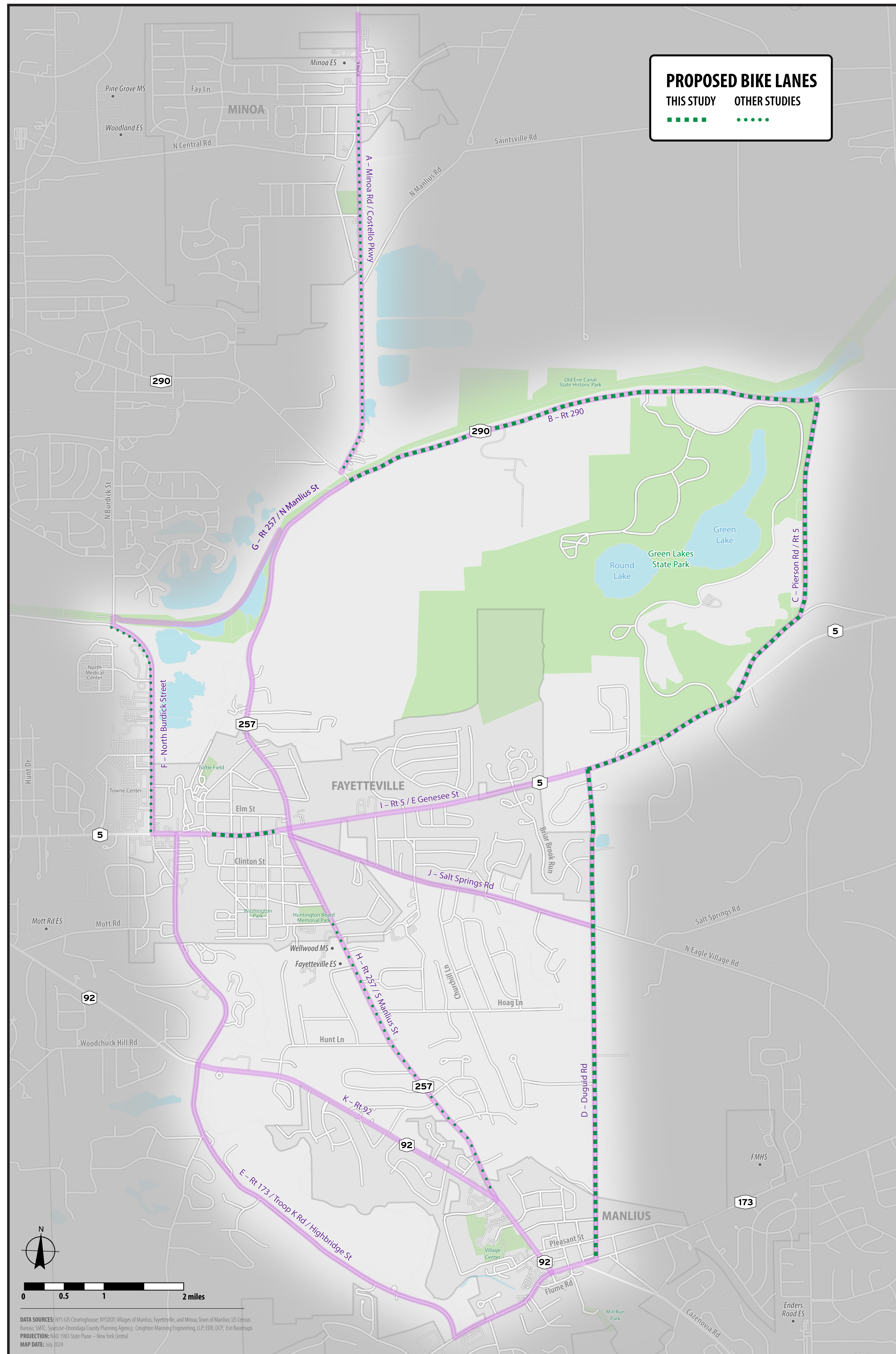


Key takeaways from public comments:

- Physically separate pedestrians and bicyclists from vehicles
- Consider higher density areas outside of study area (i.e., schools)
- Safety through traffic calming and slower speeds
- Add bike lanes and sidewalk to Route 257
- Extend sidewalks on Highbridge Street, Green Lakes entrance, Burdick Street
- Add signage
- Lower speed limit
- Modify storm drain covers for bicycles to traverse
- Additional comments shown on map to the left



Bike Lanes (Wide Shoulders)

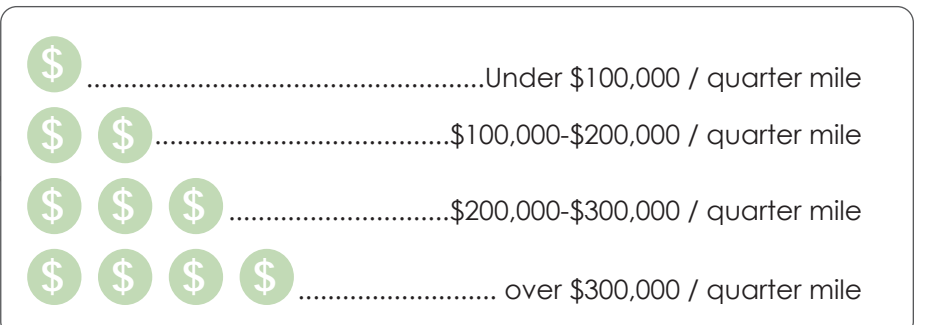


CONCEPT: Widen shoulders by narrowing travel lane and/or expanding pavement (with or without curb)

PRIMARY USE: Biking (may be used for walking when no sidewalk)

MATERIALS: Asphalt, epoxy paint (or pavement markings)

WIDTH: 5ft minimum; buffer or separation preferred



ENHANCEMENT: \$\$\$

- No roadway expansion
- Widening shoulders using striping, narrow travel lanes, and adding buffers

KEY AREAS:

- Corridor A – Minoa Rd / Costello Pkwy
- Corridor F – Burdick Rd
- Corridor I – Rt. 5 / W Genesee St

EXPANSION: \$\$\$

- Expand pavement to create wider shoulders

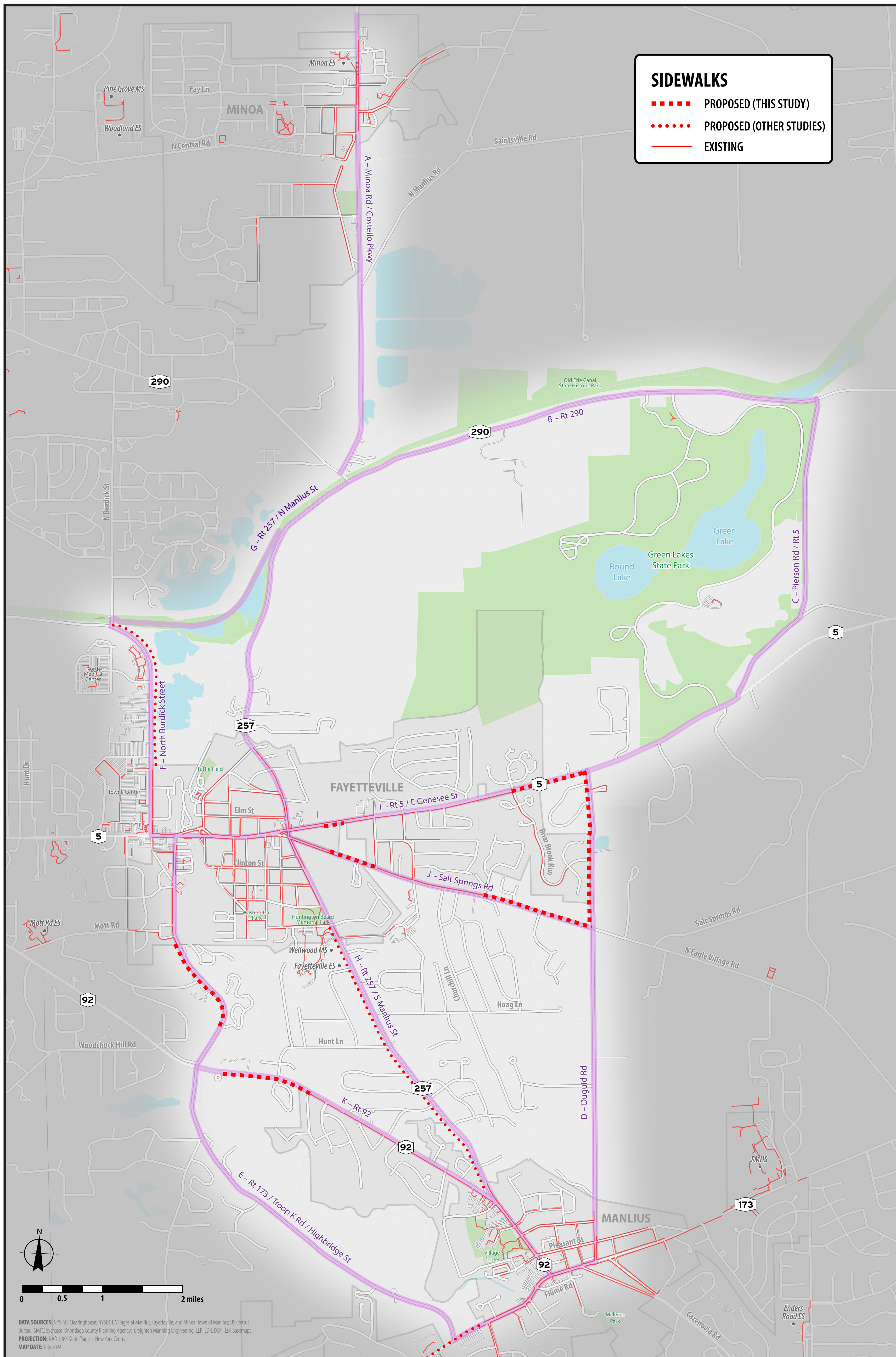
KEY AREAS:

- Corridor B – Rt. 290
- Corridor C – Pierson Rd / Rt. 5
- Corridor D – Duguid Rd
- Corridor E – Rt. 173 / Troop K Rd / Highbridge St



CONCEPT:
Minoa Road at North Manlius Road, facing north

Sidewalk Improvements



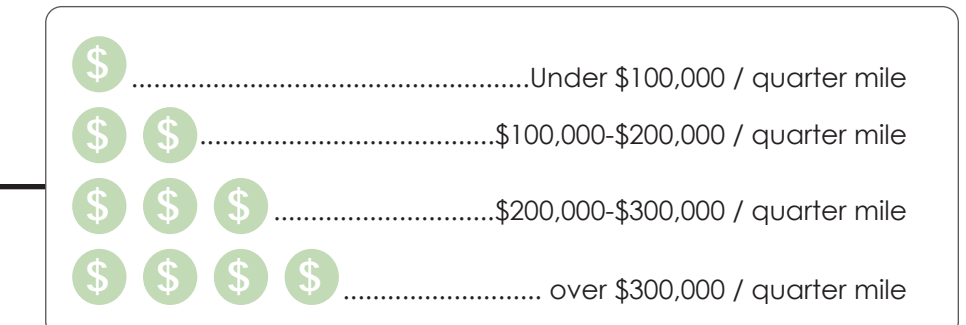
CONCEPT: Install sidewalk

PRIMARY USE: Walking, can be used for younger/less experienced bikers

MATERIALS: Concrete, asphalt, curbing where needed

WIDTH: 5ft minimum

ENHANCEMENT: \$ \$



- Adding new sidewalks or expanding upon existing sidewalk network
- Install landscaped or hardscaped maintenance strip where needed

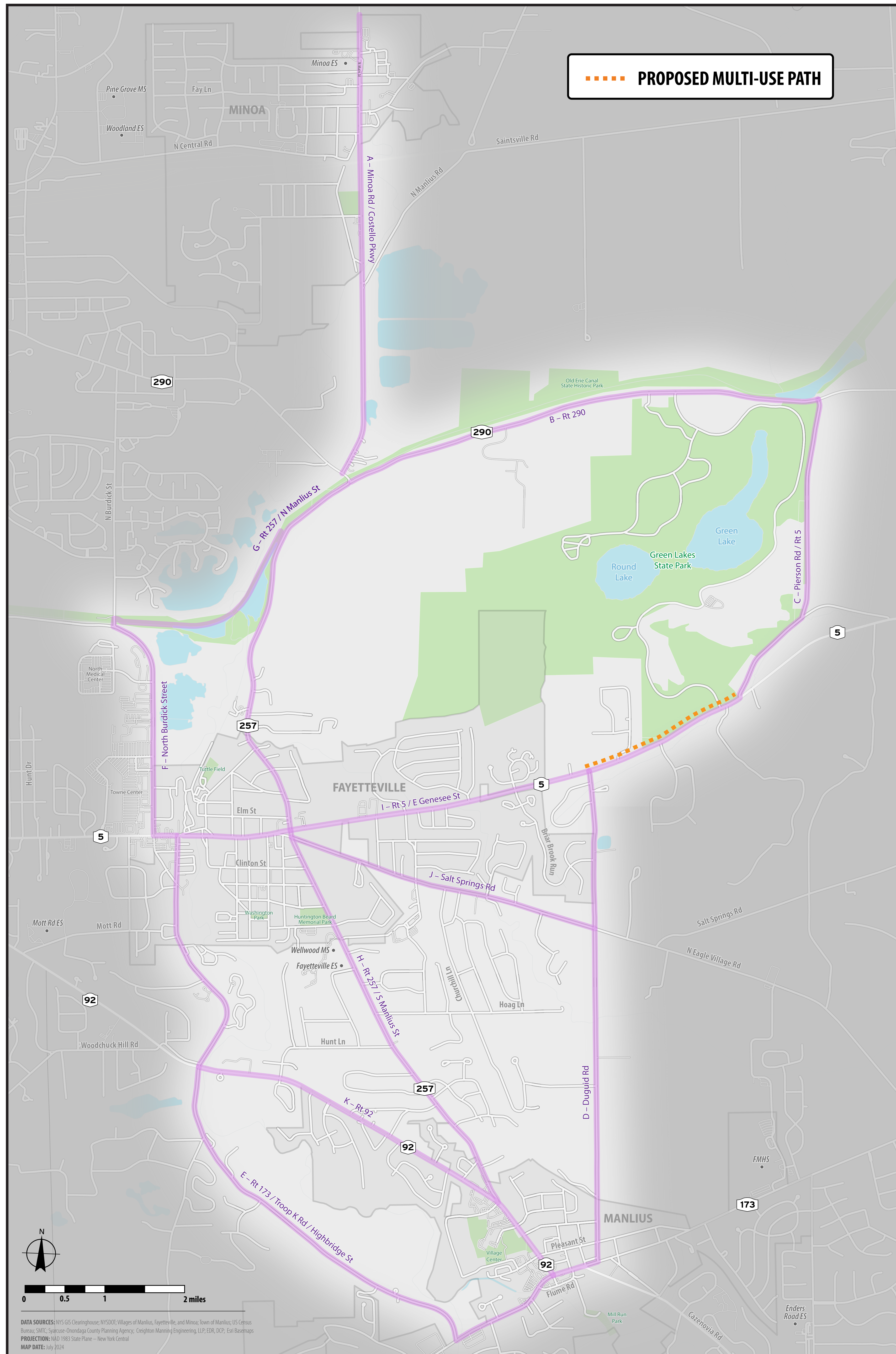
KEY AREAS:

- Corridor D – Duguid Rd
- Corridor E – Rt. 173 / Highbridge St
- Corridor F – Burdick Rd
- Corridor J – Salt Springs Rd
- Corridor K – Rt. 92



CONCEPT: Highbridge Street near Spring Pond Fisheries, facing north

Multi-Use Path Improvements

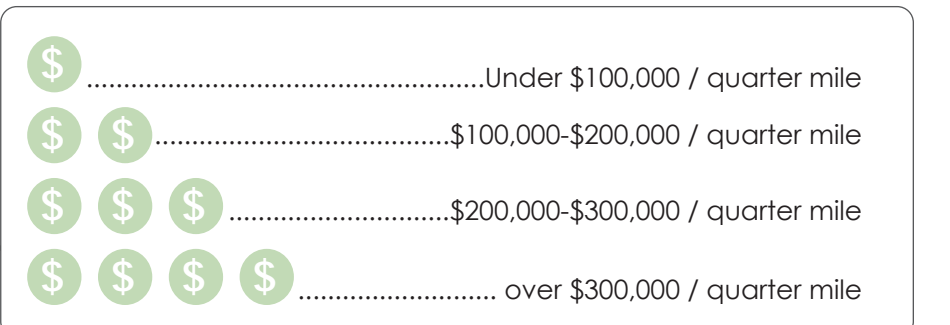


CONCEPT: Install multi-use path

PRIMARY USE: Walking, biking, rolling; bi-directional

MATERIALS: Concrete, asphalt, curbing where needed

WIDTH: 10ft minimum; 15ft preferred



ENHANCEMENT: \$ \$ \$

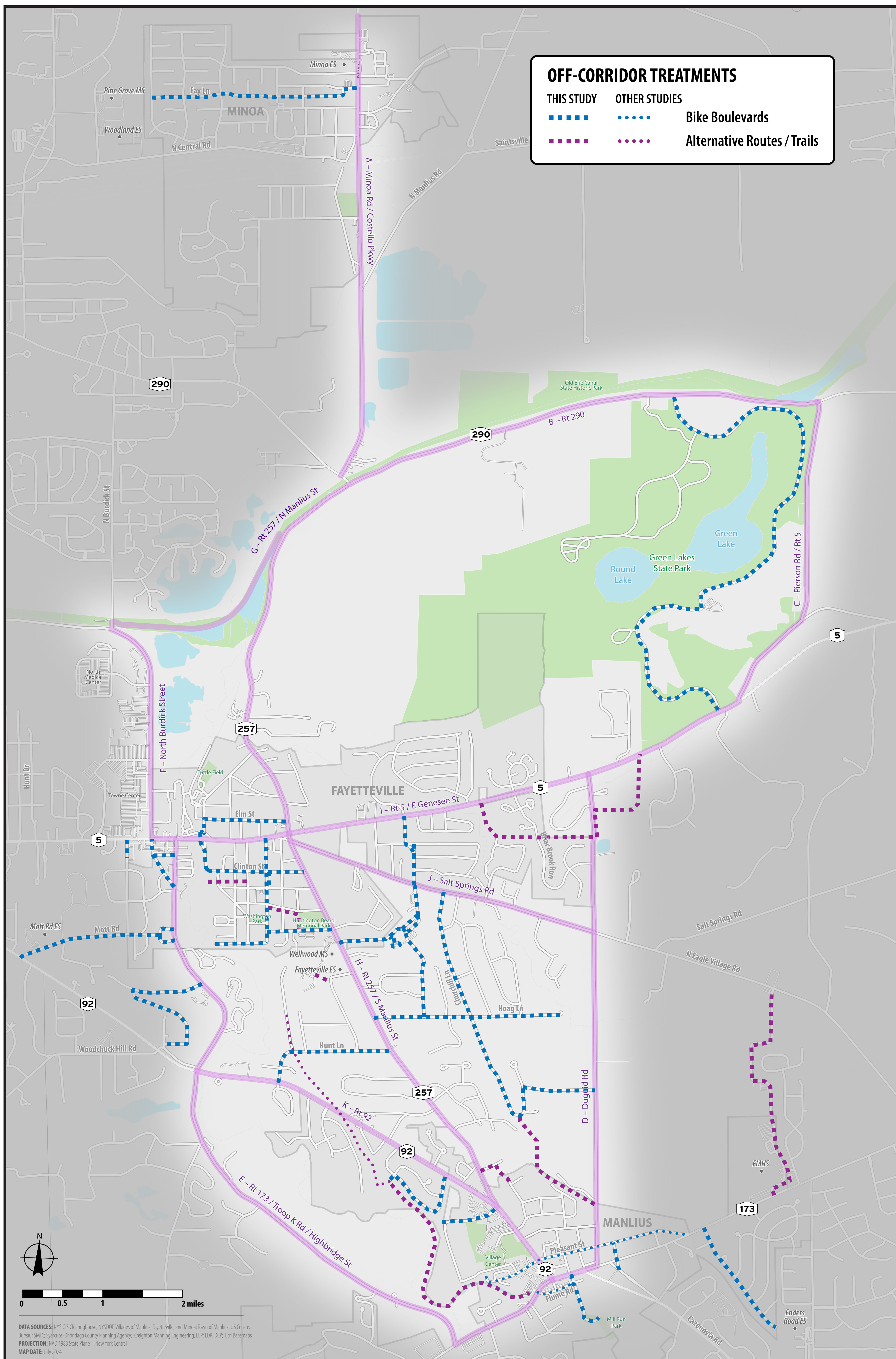
- Separated path adjacent to roadway

KEY AREAS:

- Corridor C – Rt. 5 (Duguid Rd to George Taylor Rd / Pierson Rd)



Other Off-Corridor Treatments



BIKE BOULEVARDS \$

CONCEPT: Use signage and pavement markings—along with other traffic calming—to create a slow speed and low volume road good for bicyclists to use to connect to main routes

MATERIALS: Pavement markings; signs

KEY AREAS:

- Fay Lane
- Churchill Lane

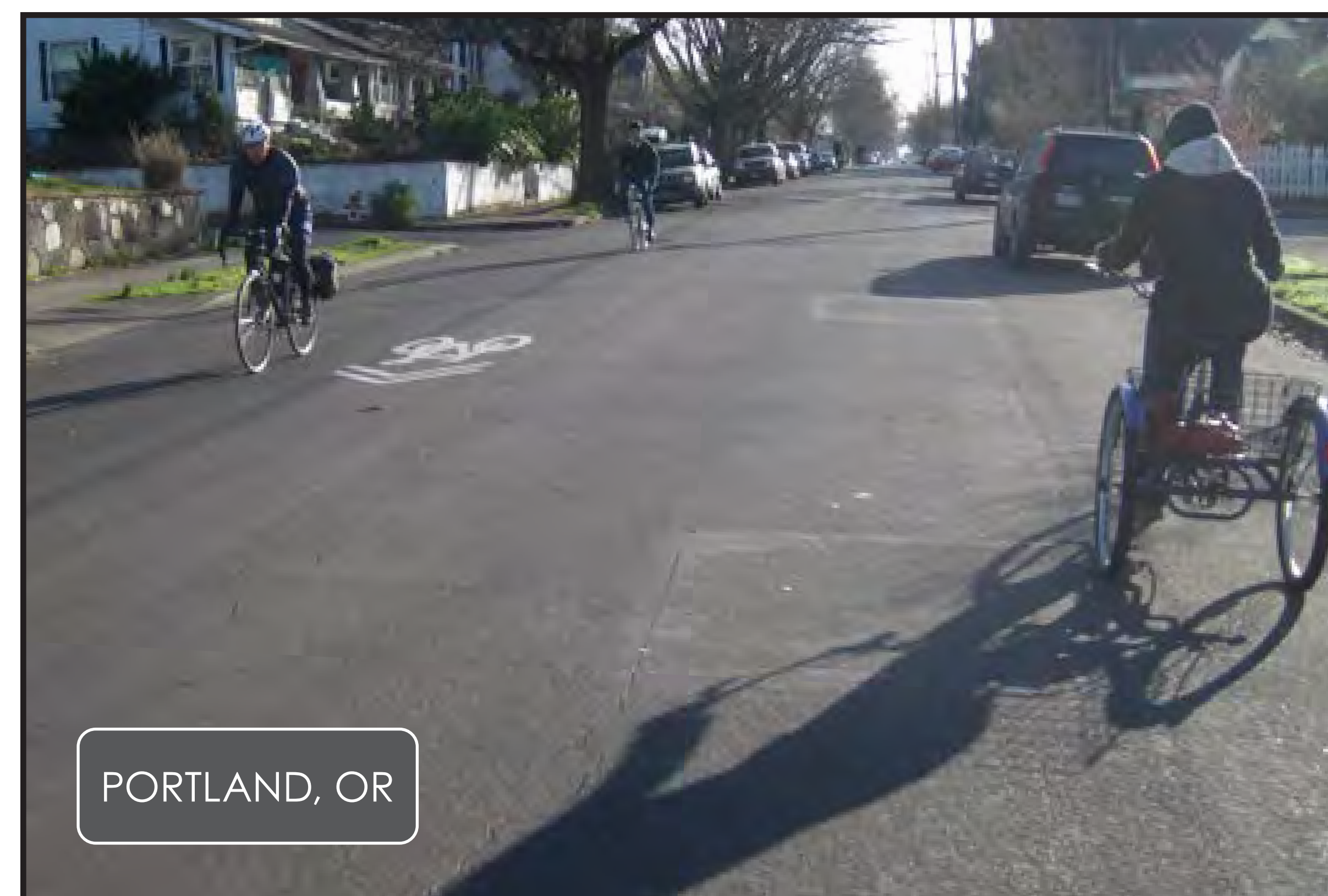
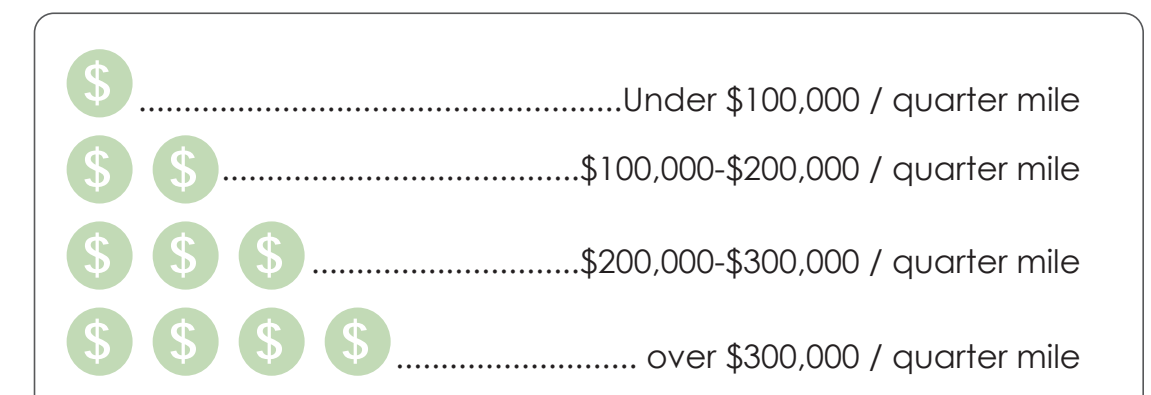
ALT. TRAILS & LINKS \$\$\$\$

CONCEPT: The creation of neighborhood-scale trails or shorter, strategic links which allow for pedestrian connections to other trails, sidewalks, or destinations

MATERIALS: Varies

KEY AREAS:

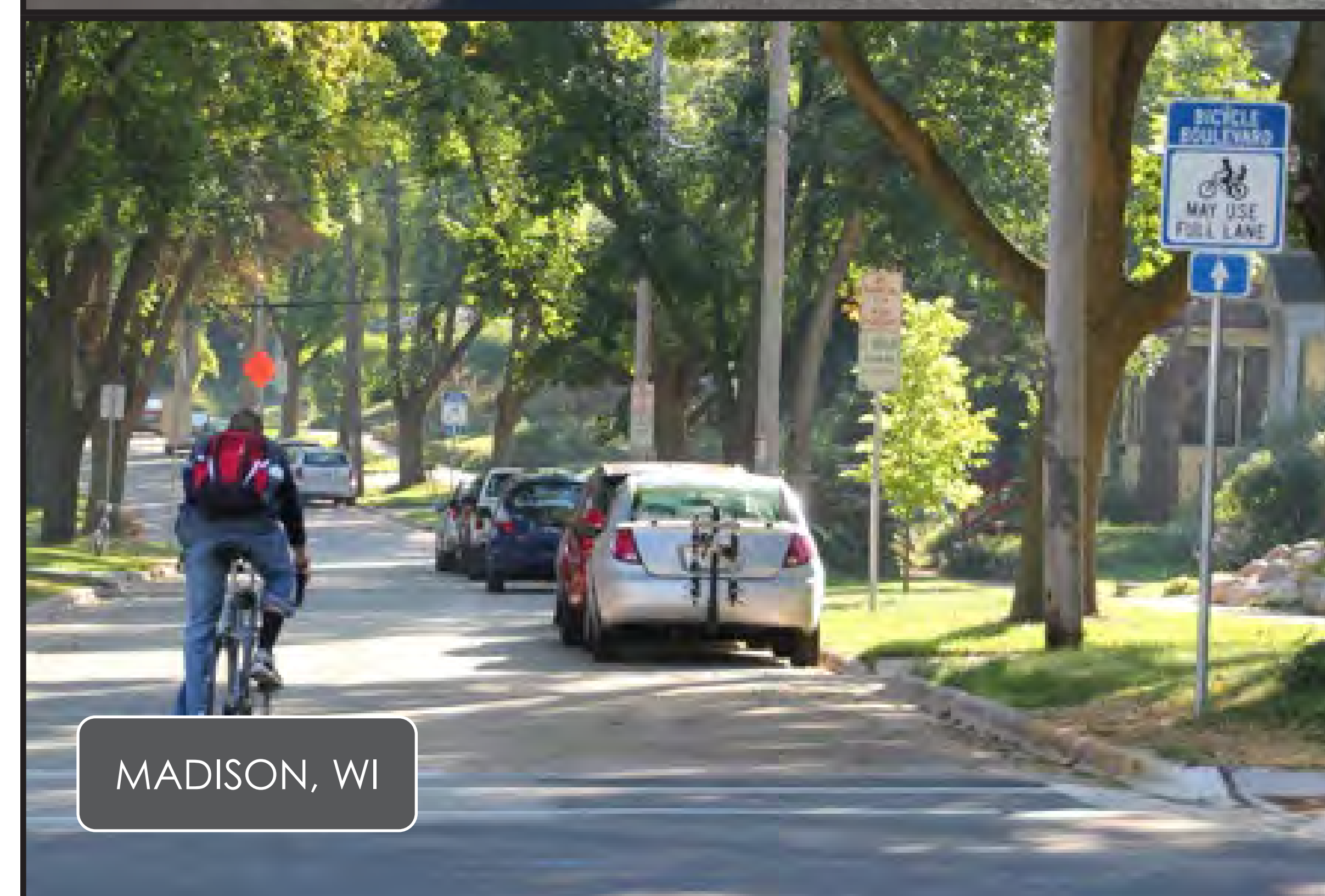
- Ledyard Trail



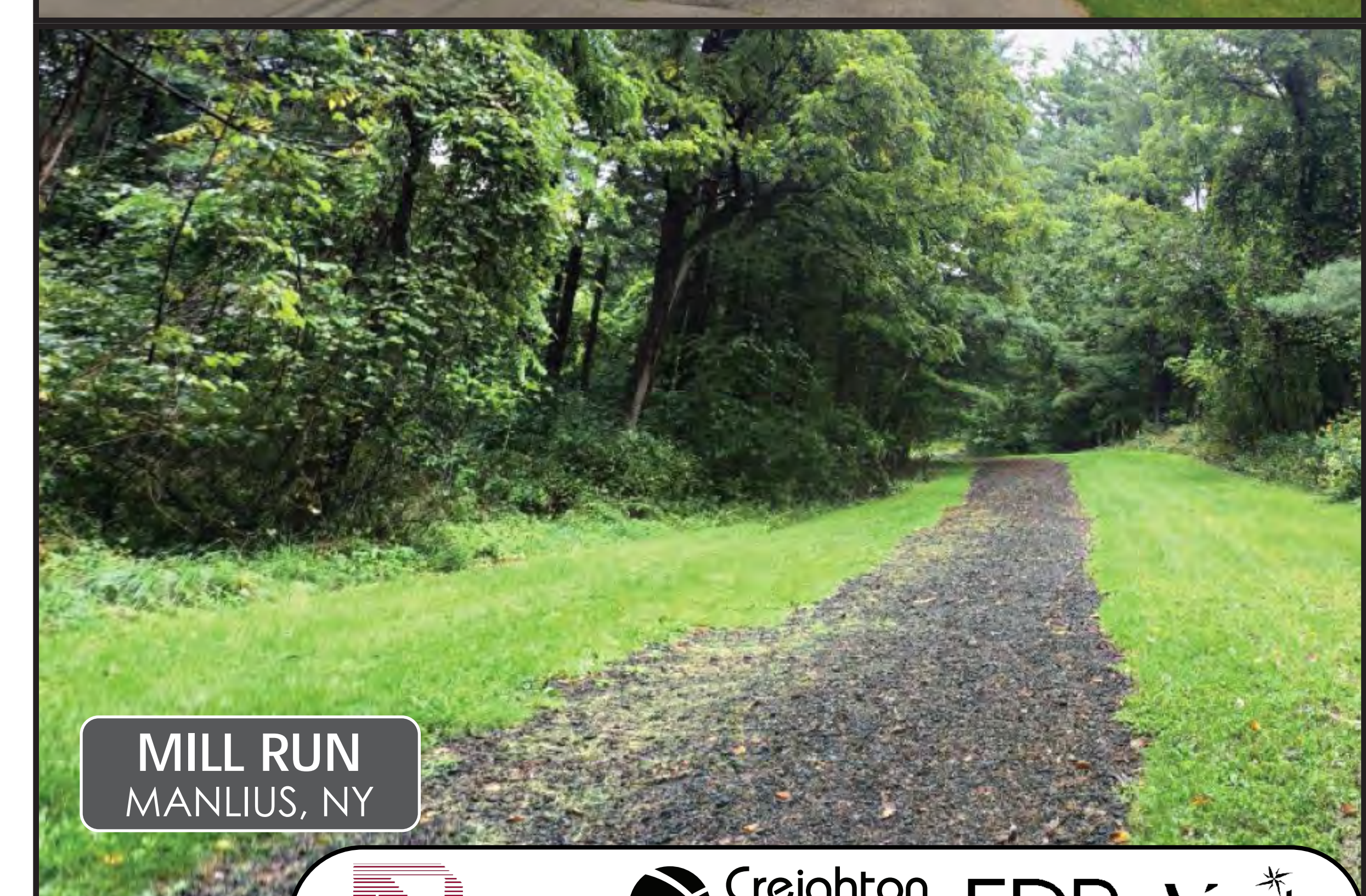
PORTLAND, OR



FAY LANE
MINOA, NY



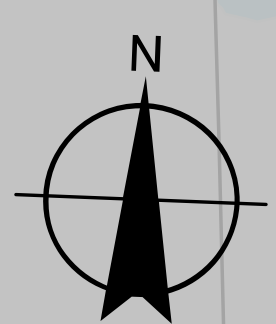
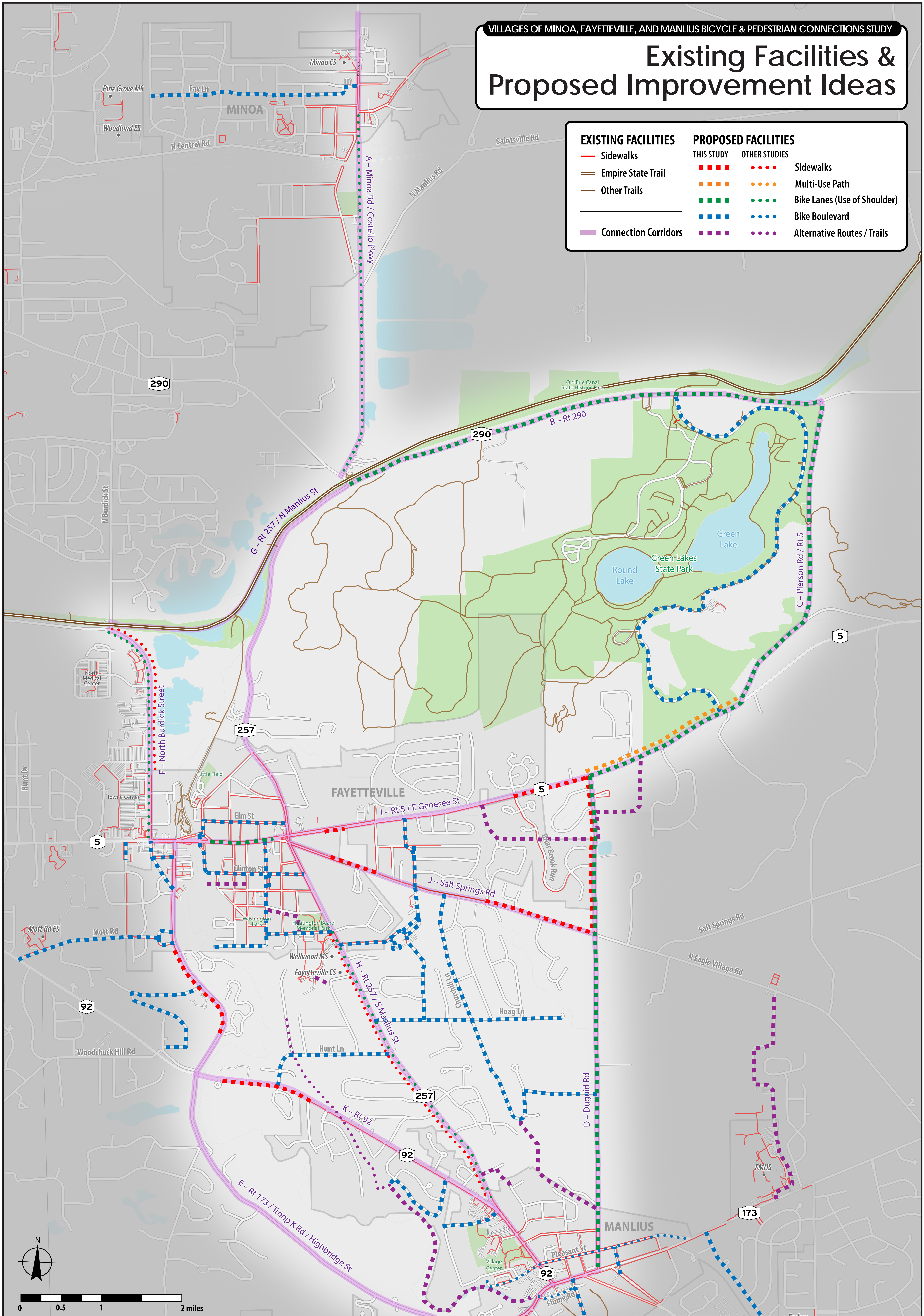
MADISON, WI



MILL RUN
MANLIUS, NY

Existing Facilities & Proposed Improvement Ideas

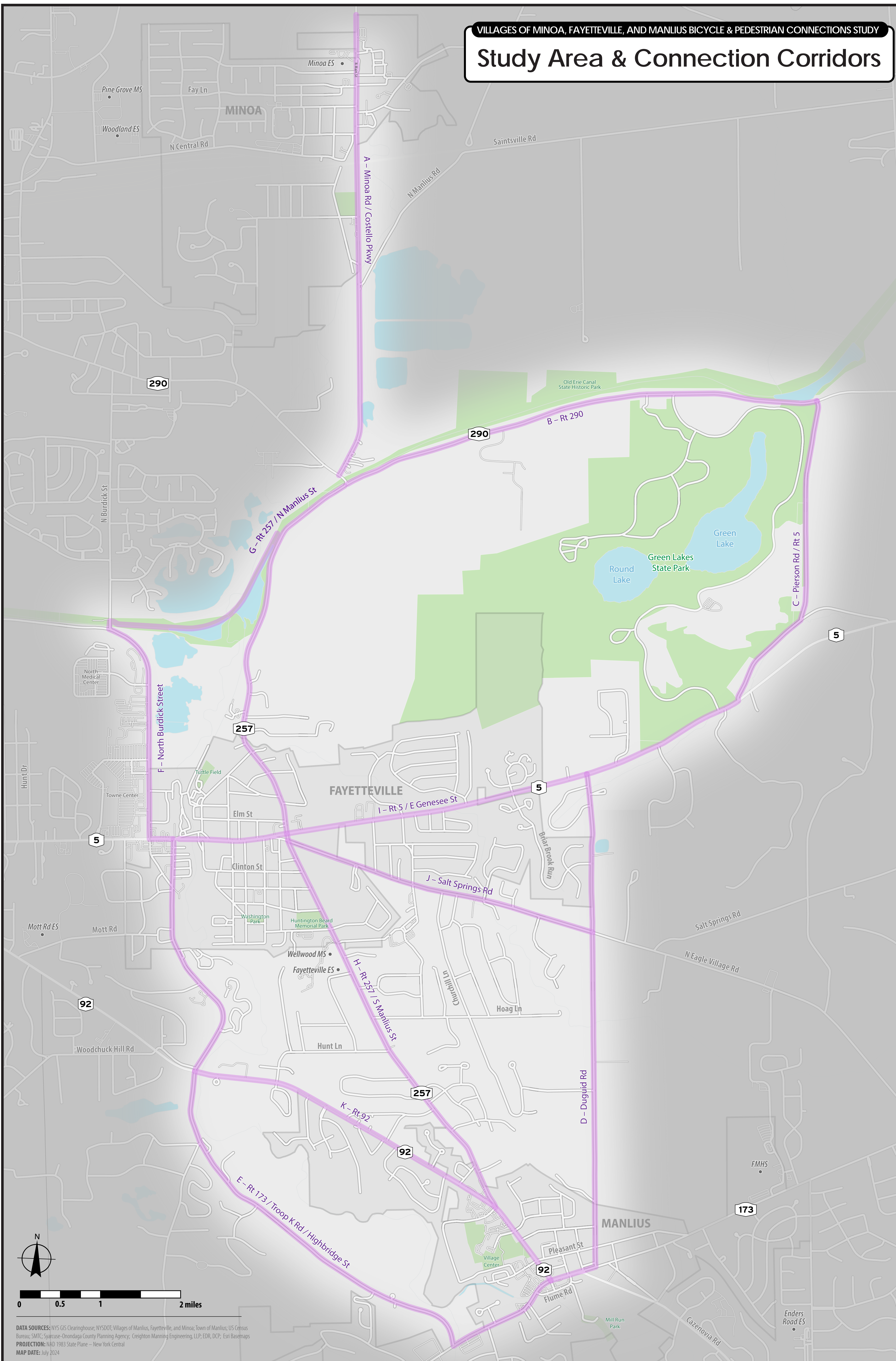
EXISTING FACILITIES		PROPOSED FACILITIES	
		THIS STUDY	OTHER STUDIES
	Sidewalks		
	Empire State Trail		
	Other Trails		
	Connection Corridors		



DATA SOURCES: NYS GIS Clearinghouse; NYSDOT; Villages of Manlius, Fayetteville, and Minoa; Town of Manlius; US Census Bureau; SMTc; Syracuse-Onondaga County Planning Agency; Creighton Manning Engineering, LLP; EDR, DCP; Esri Basemaps
 PROJECTION: NAD 1983 State Plane - New York, Central
 MAP DATE: July 2024

Next Steps & Implementation

VILLAGES OF MINOA, FAYETTEVILLE, AND MANLIUS BICYCLE & PEDESTRIAN CONNECTIONS STUDY
Study Area & Connection Corridors



IMPROVEMENT IDEAS BY CORRIDOR

Corridor	Street Name	Municipality	Type	Length (mi.)
A	Minoa Road / Costello Parkway	Minoa Manlius (T)	Bike Facility	2.3
B	Green Lakes Road / NY-290	Manlius (T)	Bike Facility	3.0
C	E Genesee Street / Pierson Road / NY-5	Manlius (T)	Bike Facility	3.0
	E Genesee Street	Manlius (T)	MUP	1.0
D	Duguid Road	Manlius (T) Fayetteville	Sidewalk	1.0
	Duguid Road	Fayetteville Manlius (V) Manlius (T)	Bike Facility	3.0
E	Highbridge Street	Fayetteville	Sidewalk	0.4
	Highbridge Street	Manlius (T)	Bike Facility	0.3
F	N Burdick Street	Fayetteville Manlius (T)	Bike Facility	1.0
	N Burdick Street	Manlius (T)	Sidewalk	1.4
H	S Manlius Street / Fayetteville-Manlius Road	Fayetteville Manlius (V) Manlius (T)	Sidewalk	2.0
	S Manlius Street / Fayetteville-Manlius Road	Fayetteville Manlius (V) Manlius (T)	Bike Facility	2.0
I	E Genesee Street / NY-5	Fayetteville Manlius (T)	Sidewalk	0.5
	E Genesee Street / NY-5	Fayetteville	Bike Facility	0.4
J	Salt Springs Road	Manlius (T)	Sidewalk	0.9
K	Highbridge Road	Manlius (T) Manlius (V)	Sidewalk	0.6
	Green Lakes Park Drive	Manlius (T)	Bike Boulevard	2.9
N/A	Local Roads East of Route 257	Manlius (T)	Bike Boulevard	4.3
	Local Roads West of Route 257	Manlius (T)	Bike Boulevard	1.4
	Local Roads	Fayetteville	Bike Boulevard	3.3
	Fay Lane	Minoa	Bike Boulevard	1.0
	Local Roads	Manlius (V)	Bike Boulevard	2.8
	West Seneca Street	Manlius (V)	Sidewalk	0.2
	Along Lincoln Avenue to W Franklin Street	Fayetteville	Trail	0.2
	N Eagle Village Road to E Seneca Turnpike and FMHS	Manlius (T)	Trail	1.1
	E Genesee Street to south of E Ridge Pointe Drive, along Duguid Road	Fayetteville Manlius (T)	Trail	1.2
	Fayetteville-Manlius Road to Park Drive	Manlius (T)	Trail	0.2
	Wheeler Avenue to Fayetteville Elementary School	Manlius (T)	Trail	0.1
	Churchill Lane to North Street	Fayetteville Manlius (T)	Trail	0.6
	Ledyard Canal Trail	Manlius (V) Fayetteville Manlius (T)	Trail	2.5

NEXT STEPS



DATA SOURCES: NYS GIS Clearinghouse; NYSDOT; Villages of Manlius, Fayetteville, and Minoa; Town of Manlius, GIS Center
 DESIGN: SSMC; CREIGHTON MANNING; CONSTRUCTION: CREIGHTON MANNING ENGINEERING, LLP; DATE: 02/2024
 PRODUCTION: 08/2024 State Plane - New York Central
 MAP DATE: July 2024