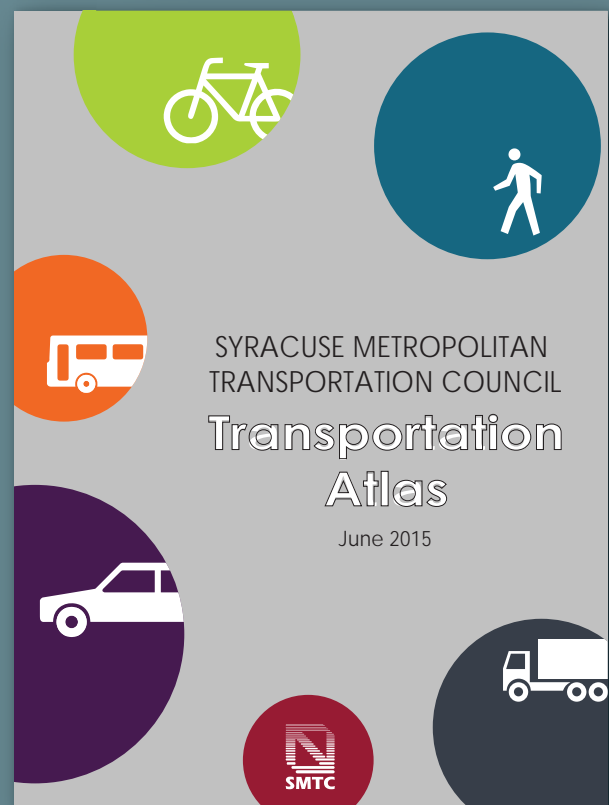
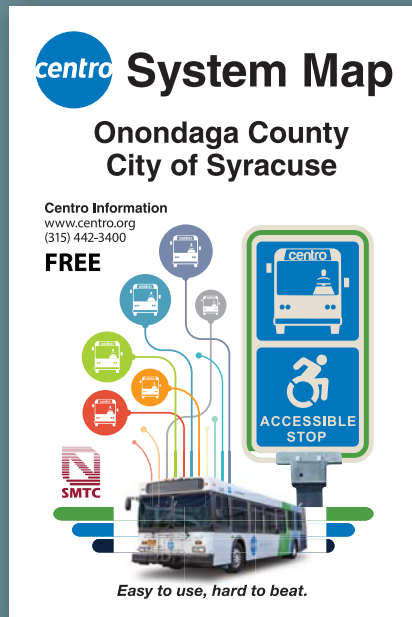


# UPWP 2017-2018

## Unified Planning Work Program Annual Report



SYRACUSE METROPOLITAN TRANSPORTATION COUNCIL

2017-2018 UNIFIED PLANNING WORK PROGRAM

FOR TRANSPORTATION PLANNING

in the

SYRACUSE  
METROPOLITAN PLANNING AREA

Adopted by the Policy Committee of the  
Syracuse Metropolitan Transportation Council

December 15, 2016

This document has been ADOPTED by the Syracuse Metropolitan Transportation Council (SMTC). The SMTC Member Agencies agree to the contents and will adhere to said document as necessary and to the best of their ability.

This document was prepared with financial assistance from the Federal Highway Administration and the Federal Transit Administration of the U.S. Department of Transportation through the New York State Department of Transportation. The SMTC is solely responsible for its content.

SYRACUSE METROPOLITAN TRANSPORTATION COUNCIL  
2017-2018 UNIFIED PLANNING WORK PROGRAM

TABLE OF CONTENTS

<u>Section</u>	<u>Page</u>
RESOLUTION	4
2017-2018 UNIFIED PLANNING WORK PROGRAM - PURPOSE	6
DEVELOPMENT OF THE UNIFIED PLANNING WORK PROGRAM	6
COUNCIL ORGANIZATION	8
SMTC COMMITTEE STRUCTURE	10
SMTC STAFFING	11
OPERATIONAL PROCEDURES AND BYLAWS	11
TITLE VI POLICY	11
UNIFIED PLANNING WORK PROGRAM FRAMEWORK	12
SUMMARY OF MAJOR PROGRAMMED ACTIVITIES	14
NYS MPO SHARED COST INITIATIVES	15
2017-2018 UNIFIED PLANNING WORK PROGRAM OUTLINE	16
1. PROGRAM ADMINISTRATION AND SUPPORT	17
2. SHORT RANGE TRANSPORTATION PLANNING	23
3. LONG RANGE TRANSPORTATION PLANNING	28
4. TRANSPORTATION IMPROVEMENT PROGRAM	53
5. OTHER ACTIVITIES	55
6. BUDGET TABLES	57
<u>2017-2018</u>	
TABLE 1 - SUMMARY BUDGET	58
TABLE 2 - SUMMARY BUDGET - FEDERAL PROGRAMS ONLY	59
TABLE 3 - FHWA BUDGETS	60
TABLE 4 - FTA BUDGETS	61
TABLE 5 - TOTAL AUDITABLE BUDGET	62
TABLE 6 - STATE PLANNING & RESEARCH FUNDING	63
APPENDICES	64
APPENDIX A (Other Significant Federally Funded Transportation Planning Activities - SPR)	65

## **RESOLUTION**

### **SYRACUSE METROPOLITAN TRANSPORTATION COUNCIL POLICY COMMITTEE**

**December 15, 2016**

- WHEREAS,** In order to promote a coordinated, continuous and comprehensive transportation planning process in the Syracuse Metropolitan Area, which is comprised of Onondaga County and portions of Madison and Oswego counties, it has been found necessary to develop an annual Unified Planning Work Program (UPWP); and
- WHEREAS,** the Fixing America’s Surface Transportation (FAST) transportation authorization has committed funds for metropolitan transportation planning activities; and
- WHEREAS,** the SMTC Planning Committee has worked with the assistance of the Central Staff to develop a recommended UPWP so that the latest draft submitted herewith represents an accurate description of work to be undertaken and funds to be made available; and
- WHEREAS,** in recognition of the need to promote energy conservation and overall efficiency of the existing transportation system, the UPWP pursues work on several projects including (1) the Long Range Transportation Plan, and (2) the Transportation Improvement Program; and
- WHEREAS,** the Policy Committee is committed to assuring equal opportunity to all persons in the planning of transportation services and facilities; and
- WHEREAS,** in order to support these and other elements of the 2017-2018 UPWP, the Policy Committee continues its designation of the New York State Department of Transportation (NYSDOT) to be the grant applicant on behalf of the SMTC. The NYSDOT will apply for necessary regular program funding under the Federal Transit Administration (FTA) Section 5303 program, under the Federal Highway Administration (FHWA) “PL” transportation planning program and “SPR” program in amounts consistent with this approved UPWP.

**NOW THEREFORE BE IT RESOLVED**, that the Policy Committee adopts the 2017-2018 Unified Planning Work Program and the submission thereof to the appropriate Federal and State agencies and directs the filing of appropriate applications to support the program; and

**BE IT FURTHER RESOLVED**, that the Policy Committee authorizes the Planning Committee or the Executive Committee as appropriate, to make revisions and refinements in funding or responsibility to the UPWP as found necessary both to finalize and implement the UPWP consistent with its overall scale and program emphasis.

Done and ordered this 15<sup>th</sup> day of December 2016 by consensus of the SMTC Policy Committee.

  
Hon. Kathleen Rapp  
Chairperson  
SMTC Policy Committee

  
New York State Department of Transportation  
Secretary  
SMTC Policy Committee

Date: December 15, 2016

Date: December 15, 2016

# **SYRACUSE METROPOLITAN TRANSPORTATION COUNCIL**

## **2017-2018 UNIFIED PLANNING WORK PROGRAM - PURPOSE**

The Unified Planning Work Program (UPWP) incorporates in one document all transportation planning and directly supporting comprehensive planning activities in the Syracuse Metropolitan Area during State fiscal years 2017-2018 (April 1, 2017 - March 31, 2018). It is intended to provide a mechanism for the coordination of transportation planning efforts by local, State, and regional agencies through the Syracuse Metropolitan Transportation Council (SMTC).

The U.S. Department of Transportation (USDOT) and its modal administrations (i.e., the Federal Highway Administration [FHWA] and the Federal Transit Administration [FTA]) require this UPWP as a basis and condition for all funding assistance for transportation planning to State, local and regional agencies. The authority for this requirement is found in two separate Federal legislative acts establishing transportation planning programs:

1. Title 23, U.S. Code Section 134 (Federal Aid Highway Act of 1962, as amended)
2. Title 49, U.S. Code Section 1603 et. al.: (Urban Mass Transportation Act of 1964, as amended).

## **DEVELOPMENT OF THE UNIFIED PLANNING WORK PROGRAM**

As the Metropolitan Planning Organization (MPO) designated by the Governor of the State of New York, the SMTC has the responsibility to carry out the continuous, comprehensive and cooperative transportation planning process for the Syracuse Metropolitan Area. This area consists of Onondaga County, the Town of Sullivan in Madison County, and the Towns of Hastings, Schroepfel, West Monroe and a small portion of Granby in Oswego County. The Unified Planning Work Program identifies the transportation planning activities which are to be undertaken in the SMTC study area in support of the goals, objectives and performance measures established in the Long Range Transportation Plan (LRTP), which was adopted in September 2015. The SMTC Central Staff, working with the Planning Committee and the New York State Department of Transportation (NYSDOT), initiates the process of developing the UPWP and prepares a final draft for both Planning and Policy Committee consideration. The intent in developing a comprehensive Work Program is to ensure that a coordinated transportation planning process occurs in the region, which will make positive contributions toward achievement of the established LRTP goals regarding facilities, freight movement, safety, security, and resiliency, multi-modal accessibility and mobility, the environment, energy conservation and management, economy and land use.

The SMTC's Operations Plan outlines a framework for the UPWP that the Central Staff is expected to accomplish, and provides guidance with respect to a financial plan to support the Work Program. This 2017-2018 Work Program is intended to be consistent with the Operations Plan, as well as the metropolitan planning requirements of the Federal Moving Ahead for Progress in the 21st Century (MAP-21), the Fixing America's Surface Transportation (FAST) Act and, its implementing regulations. Compliance with these regulations frames much of this program. Further, the Work Program strives to address NYSDOT and USDOT planning emphasis areas which are intended to implement policies for urban area transportation planning. This is to ensure that projects conceived by the SMTC fulfill Federal and State policies, and local issues progress in a timely manner.

## *Federal Planning Emphasis Areas*

In April 2014, FHWA and FTA jointly issued Planning Emphasis Areas (PEAs), which are planning topical areas for State DOTs and MPOs to place emphasis on when developing their work programs. The PEAs for the 2017-2018 UPWP are the same from prior programs: 1) Models of Regional Planning Cooperation; 2) Ladders of Opportunity: Access to Essential Services; and 3) MAP-21 Implementation.

**Models of Regional Planning Cooperation** – Promote cooperation and coordination across transit agency, MPO and State boundaries where appropriate to ensure a regional approach to transportation planning.

The SMTC is an active participant in the New York State Association of Metropolitan Planning Organizations (NYSAMPO). The NYSAMPO is a coalition of the 14 MPOs throughout New York along with NYSDOT, FHWA and FTA partners. Through this association, several working groups have been established that promote collaborative and comprehensive planning statewide. The working groups facilitate the sharing of best practices from within New York, as well as from other MPOs and state DOTs. The SMTC will continue direct involvement and participation within NYSAMPO and the national Association of Metropolitan Planning Organizations (AMPO). Additionally, staff works cooperatively with the Central New York Regional Planning and Development Board (the SMTC's administrative host) on a number of activities.

**Ladders of Opportunity: Access to Essential Services** – As part of the transportation planning process, identify transportation connectivity gaps in access to essential services.

Per the joint federal PEA release, essential services include housing, employment, health care, schools/education, and recreation. The area's Coordinated Public Transit – Human Services Transportation Plan (Coordinated Plan) was updated/revised in 2014. The Coordinated Plan identified gaps in the transportation system and recommended several activities and strategies for implementation to reduce these connectivity gaps. As part of the 2017-2018 UPWP, a specific work task focused on identifying accessibility measures such as availability of transit service, travel time to work and transportation to work services will be continued. An update to the area's Coordinated Plan will occur as well. Additional project specific information is contained in the following sections.

**MAP-21 Implementation** – Transition to Performance Based Planning and Programming.

In September 2015, the SMTC completed two significant documents that strive to advance performance based planning and programming within the Syracuse metropolitan area; the 2050 LRTP and the 2015 Congestion Management Process (CMP). The 2015 CMP relies on a number of performance measures established in the new 2050 LRTP. Additionally, the capital program evaluation and selection process as part of the Transportation Improvement Program has been modified to account for the new performance based planning initiatives developed in the LRTP and CMP.

The status of the current Work Program is reviewed monthly by the SMTC's Executive Committee to ensure that it is being carried out in a manner consistent with the MPO's goals. While it is the mission of the Central Staff and the Executive Committee to complete work efforts within a program year, task elements may be designed to span multiple fiscal years and therefore are carried into subsequent Work Programs to effect closure. Each year an estimate of transportation planning funds available for new programs is made. Policy direction and scope of the UPWP are developed with member agency participation based on their needs, consistent with the LRTP.



The staff, working with member agencies, establishes a list of candidate projects for inclusion in the next year's work program. Estimates of amounts and sources of funding needed to accomplish the planning program are developed. The Planning Committee then prioritizes the continuing program and the new projects. A draft UPWP is developed for Planning Committee review and recommendation of adoption to the Policy Committee. The Policy Committee has the final responsibility to adopt the UPWP.

### **COUNCIL ORGANIZATION**

The Syracuse Metropolitan Transportation Council is organized to facilitate and encourage maximum interaction between local, State and Federal agencies involved in the transportation decision-making process. To accomplish this, a committee structure was adopted to include the following Committees:

#### *Policy Committee*

The Policy Committee consists of the elected and appointed officials representing local, State and Federal governments and other organizations/agencies having an interest or responsibility in comprehensive transportation planning in the Syracuse Metropolitan Planning Area. The primary responsibility of the Policy Committee is to establish policies for the overall conduct of the SMTC.

#### *Planning Committee*

The Planning Committee, which is established by the Policy Committee, is composed of the professional/technical representatives of both the Policy Committee members and public agencies having direct or indirect responsibility for transportation planning and/or implementation. Their primary responsibility is to monitor all technical activities including the annual development of a draft UPWP and Transportation Improvement Program (TIP) for recommendation to the Policy Committee. They also direct and consider for recommendation to the Policy Committee all major studies and planning activities.

#### *Executive Committee*

The Executive Committee is made up of Planning Committee members and provides oversight of the day-to-day operation of the Central Staff for financial management, personnel and other administrative requirements.

#### *Additional Committees*

An important element in the operation of the Planning Committee is the effective utilization of both formal and ad-hoc advisory committees to review and evaluate detailed Council issues and results of planning activities. The committees function principally to make recommendations to the Planning Committee on subjects directed to them by the Planning Committee which require extensive evaluation and which would be inefficient to resolve by the full committee itself.

The SMTC typically develops a project specific Study Advisory Committee (SAC) for each of its planning activities. The SMTC also has a permanent Capital Projects Committee that is responsible for making recommendations to the full Planning Committee regarding project priorities to be funded by various Federal Transportation Programs and included in the TIP.



### *Non-Voting Membership*

The SMTTC maintains a non-voting membership category to accommodate agencies that have programs indirectly related to transportation and/or transportation planning. With the exception of voting on official Council business, these members are eligible to participate in Committee discussions and to receive all SMTTC correspondence.

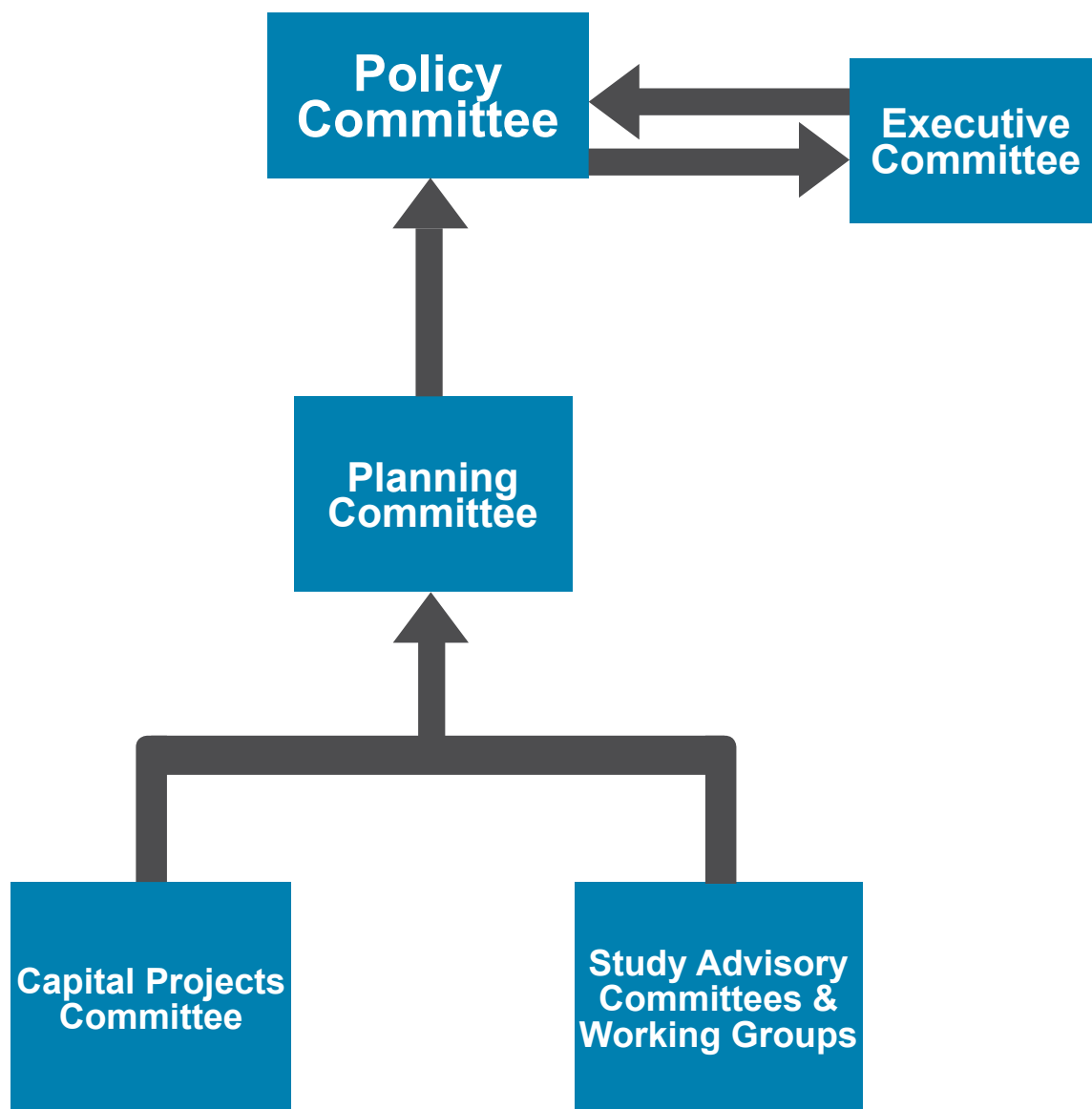
### *Organizational Objectives*

In order to achieve the SMTTC program goals and the detailed technical activities inherent in them, the SMTTC organization has the following objectives:

1. Develop an administrative committee structure which will express and coordinate transportation planning and development values, policies, and goals as related to transportation requirements at all governmental levels;
2. Provide guidance to public and private decision-makers involved in immediate implementation and long-range activities;
3. Provide technical study programs and fulfill organizational responsibilities necessary to continue transportation plan development, study refinement, and research;
4. Provide for community review of the Long Range Transportation Plan and its sub-elements, resolve conflicts with community values, and obtain participation in updating and reevaluating the plan;
5. Monitor and evaluate changes in the metropolitan structure and identify growth problems, and update the plan as necessary; and
6. Promote the coordination of planning activities to implement the “continuing, comprehensive, cooperative planning” concept.

## SMTC COMMITTEE STRUCTURE

### Committee Structure



SMTC Staff carries out the work program under the direction of the Policy Committee.

## **SMTC STAFFING**

The work proposed under this UPWP will be accomplished primarily by the SMTC Central Staff, with the assistance and cooperative support of participating agencies (e.g., Central New York Regional Planning and Development Board [CNY RPDB], Central New York Regional Transportation Authority [CNYRTA], City of Syracuse, NYSDOT, Onondaga County, and the Syracuse-Onondaga County Planning Agency [SOCPA]) as well as the use of private consultants, where appropriate.

### *SMTC Central Staff*

A permanent, multi-disciplinary professional staff has been assembled to carry out the major portion of the SMTC continuing transportation planning program. This staff, consisting of a Director, professional, technical and support personnel, will pursue specific SMTC work program task elements under the direction of the Executive Committee.

Onondaga County acts as the Host agency for the Central Staff operation and contracts with the CNY RPDB to administer the program. As part of the host's responsibility, an annual audit of the SMTC financial records is completed, as required by Federal regulations. The CNY RPDB also contributes technical support to the SMTC as needed.

### *Member Agencies*

On occasion, and as recommended by the Central Staff Director, as identified in the UPWP, member agency staff may coordinate work activities with the SMTC Central staff.

## **OPERATIONAL PROCEDURES AND BYLAWS**

The SMTC operates under an adopted set of bylaws. Administrative and operational procedures are included in the SMTC Operations Plan and in the operational policies of the CNY RPDB.

Official records of SMTC business are maintained in the SMTC Administrative Offices located at 100 Clinton Square, 126 North Salina Street, Suite 100, Syracuse, NY 13202. All of the SMTC records are available for public inspection during normal business hours.

## **TITLE VI POLICY**

The SMTC is committed to ensuring that no person is excluded from participation in, or denied the benefits of, its metropolitan transportation planning process on the basis of race, color, national origin, sex, age, disability, low income or Limited English Proficiency status as protected by Title VI of the Civil Rights Act of 1964 and related statutes and regulations.

## **UNIFIED PLANNING WORK PROGRAM FRAMEWORK**

The Unified Planning Work Program establishes the transportation planning activities and programs of the Metropolitan Planning Organization (MPO) to be carried out over the course of the work program year(s) (April through March). Other than administration, the basis of the work program is focused in three broad areas:

- I. Maintenance of a Transportation Improvement Program, which identifies projects and/or programs to receive various sources of Federal funds covering highway, transit, and intermodal facilities and programs.
- II. Maintenance and implementation of the Long Range Transportation Plan, which identifies priority transportation system deficiencies and feasible/appropriate methods for addressing those deficiencies in a fiscally constrained environment.
- III. Recognition of requirements established by USDOT regarding the national transportation planning priorities included in MAP-21 and the FAST Act. The ten planning factor requirements of the FAST Act are listed below.
  1. Support the economic vitality of the metropolitan area, especially by enabling global competitiveness, productivity and efficiency;
  2. Increase the safety of the transportation system for motorized and non-motorized users;
  3. Increase the security of the transportation system for motorized and non-motorized users;
  4. Increase the accessibility and mobility of people and for freight;
  5. Protect and enhance the environment, promote energy conservation, improve quality of life and promote consistency between transportation improvements and State and local planned growth and economic development patterns;
  6. Enhance the integration and connectivity of the transportation system, across and between modes, for people and freight;
  7. Promote efficient system management and operation;
  8. Emphasize the preservation of the existing transportation system;
  9. Improve the resiliency and reliability of the transportation system and reduce or mitigate stormwater impacts of surface transportation; and
  10. Enhance travel and tourism.

In addition to the ten planning factors, the FAST Act also contains the following national goals. Performance measures will be developed by USDOT to advance these goals. The SMTTC will continue to work with its state and Federal partners to ensure all plans, projects and activities of the MPO are carried out in compliance with federal transportation authorizations.

1. Safety: Achieve reduction in fatalities and serious injuries on all public roads;
2. Infrastructure condition: Maintain highway infrastructure assets in state of good repair;
3. Congestion reduction: Achieve reduction in congestion on the National Highway System;
4. System reliability: Improve the efficiency of the surface transportation system;
5. Freight movement and economic viability: Improve the national freight network, strengthen the ability of rural communities to access national and international trade markets, and support regional economic development;
6. Environmental sustainability: Enhance the performance of the transportation system while protecting and enhancing the natural environment; and
7. Reduced project delivery delays: Reduce project costs, promote jobs and the economy, and expedite the movement of people and goods by accelerating project completion.

## **SUMMARY OF MAJOR PROGRAMMED ACTIVITIES**

The 2017-2018 UPWP is based on the SMTc's 2050 Long Range Transportation Plan, which has been adopted by the Policy Committee. Emphasis has been placed on developing a program which can be reasonably accomplished with available staff and consultant resources and which is in keeping with the priorities of the SMTc area.

MAP-21, FAST Act and other Federal legislation (1990 Clean Air Act Amendments and Americans With Disabilities Act of 1990) significantly impact the manner in which the cooperative, continuous and comprehensive transportation planning process is administered. Among the opportunities are funding flexibility, intermodal planning, protection of the environment and the maintenance and preservation of existing transportation infrastructure. The out-come driven approach to metropolitan transportation planning specified in MAP-21 and, the FAST Act that was signed into law in December 2015, is applied within the functions of the SMTc.

Tasks within this Work Program are organized into several major categories to facilitate review and management as follows:

- 1. Program Administration and Support**

This category includes general administration, UPWP maintenance and development and public participation. In addition, funding is included for the staff to become educated on federal legislation and requirements.

- 2. Short Range Transportation Planning**

This category includes projects which could be implemented in a shorter timeframe and includes activities related to the Census data, transit and vehicle data collection and Geographic Information Systems (GIS) activities.

- 3. Long Range Transportation Planning**

The majority of UPWP projects that fall under this category are either annual activities or projects that tend to take longer to complete.

- 4. Transportation Improvement Program (TIP)**

This category includes various tasks associated with the administration and maintenance of the TIP, which identifies projects and programs to receive various sources of Federal funds covering air quality, highway, transit, and intermodal facilities and programs.

- 5. Other Activities**

This category includes miscellaneous activities and special technical assistance not otherwise covered.

# **New York State Metropolitan Planning Organizations**

## **SHARED COST INITIATIVES**

In addition to the projects included in the SMTC's program, staff participates with other New York State Metropolitan Planning Organizations on several Shared Cost Initiative (SCI) projects. The SMTC's federal allocation accounted for in the budget tables does not include the set-aside for these SCI projects, as the allocation was previously adjusted proportionally by NYSDOT. In addition, the SMTC's FHWA allocation has also been adjusted to account for the annual Association of Metropolitan Planning Organization's dues. Also, it should be noted that the SCI funding includes NYSDOT Statewide Planning and Research (SPR) funding for SCI Working Groups as listed in the attached table. The SCI projects are outlined below for 2017-2018. The SMTC fully supports and participates in the SCI program statewide.

As part of the UPWP development each year, the various MPOs in New York State (i.e., NYSAMPO) collectively reserve a limited amount of federal transportation planning funds to fund a series of statewide shared cost initiatives and pay annual dues to the Association of Metropolitan Planning Organizations (AMPO). As available, the NYSDOT has made FHWA SPR funds available to NYSAMPO to supplement SCIs funded with FHWA PL and FTA MPP funds.

### **NYSAMPO Staff Support**

Objective: Provide administrative and technical support for NYSAMPO efforts, including working groups.

Cost: \$250,000 (\$150,000 FHWA PL and \$100,000 NYSDOT SPR)

Lead Agency: Capital District Transportation Committee

### **NYSAMPO Staff Training**

Objective: Provide relevant training and professional development opportunities for the staffs and member agencies of MPOs.

Cost: \$100,000 FHWA PL/ \$20,000 NYSDOT Match (toll credits)

Lead Agency: Genesee Transportation Council

### **AMPO Dues**

Objective: Ensure that MPOs are aware of and considered in the development of national transportation policy.

Cost: \$41,292 (FHWA PL)

Lead Agency: Binghamton Metropolitan Transportation Study



2017-2018 UPWP  
PROGRAM OUTLINE

THIS TABLE IS FOR INFORMATIONAL PURPOSES ONLY. THE INDICATED BREAKDOWN OF ESTIMATED STAFF/CONTRACTUAL ASSIGNMENTS AND BUDGETS ARE SUBJECT TO MODIFICATION AS NEEDED.

ID	Category	2017-2018			Notes
		Project Total	Staff & Operating Expense Budget	Contractual Budget	
1.	Program Administration and Support (44.21.00)				
A.	General Administration	\$260,000	\$180,000	\$80,000	Contractual for Host Agency Agreement
B.	Public Participation and Web Site Update	\$55,000	\$30,000	\$25,000	
C.	Federal Transportation Legislation Examination and Evaluation	\$10,000	\$10,000	\$0	For legislative compliance
D.	UPWP Previous Year Closeouts	\$10,000	\$10,000	\$0	
E.	UPWP Maintenance and Development	\$10,000	\$10,000	\$0	
Total Program Administration & Support		\$345,000	\$240,000	\$105,000	
2.	Short-Range Transportation Planning (44.24.00)				
A.	Census Data Compilation and/or Analysis	\$5,000	\$5,000	\$0	
B.	Data Collection, Compilation and/or Analysis	\$33,000	\$15,000	\$18,000	
C.	Geographic Information Systems - SMTC	\$50,000	\$50,000	\$0	
D.	Geographic Information Systems - Member Agency Assistance	\$30,000	\$30,000	\$0	Purpose is to provide GIS services to Member Agencies related to regional planning
Total Short-Range Transportation Planning		\$118,000	\$100,000	\$18,000	
3.	Long-Range Transportation Planning (44.23.02)				
A.	Bicycle/Pedestrian Planning	\$30,000	\$30,000		
B.	Bridge and Pavement Condition Management System (BPCMS)	\$20,000	\$20,000	\$0	
C.	I-81 NEPA Involvement	\$15,000	\$15,000	\$0	Plus consultant expenses incurred under SPR (see associated table) SPR Total for Year 2017- 2018 is \$100,000
D.	I-81 Travel Demand Modeling Project	\$10,000	\$10,000	\$0	
E.	MPO Area Regional Planning Initiatives	\$30,000	\$30,000	\$0	
F.	Long-Range Transportation Plan	\$45,000	\$45,000	\$0	
G.	Rail, Truck and Transit Planning	\$45,000	\$45,000	\$0	
H.	Traffic Safety	\$10,000	\$10,000	\$0	
I.	Travel Demand Modeling	\$50,000	\$30,000	\$20,000	Contractual for Modeling Assistance as necessary for staff assistance
J.	ROW Data Collection and Inventory	\$10,000	\$10,000	\$0	
K.	Syracuse Metropolitan Area Regional Transit Study Ph. I	\$130,000	\$50,000	\$80,000	
L.	Erie Boulevard East Pedestrian Study	\$30,000	\$30,000	\$0	
M.	Bicycle & Pedestrian Safety Outreach	\$15,000	\$15,000		
N.	Work Link	\$30,000	\$30,000		
O.	Camillus Bike/Ped Assessment	\$30,000	\$30,000		
P.	CCEO Inland Port Modeling and Analysis Technical Assistance	\$5,000	\$5,000		
Q.	Centro Rider / Non Rider Survey	\$35,000	\$35,000		
R.	Centro Employer Survey	\$10,000	\$10,000		
S.	Carrier Park Mobility Plan	\$35,000	\$35,000		
T.	Central DeWitt Bike / Ped Mobility Plan	\$30,000	\$30,000		
U.	Fayetteville Route 5 Buildout Analysis Assistance	\$35,000	\$35,000		
V.	City and OCDOT Traffic Count Program (recurring)	\$40,000	\$10,000	\$30,000	Recurrent effort to count segments over a 7 - 10 year cycle.
W.	Local Comprehensive Plan Assistance	\$50,000	\$50,000		Muti-year effort assuming funds available
X.	Skaneateles Multi-Use Corridor	\$20,000	\$20,000		
Total Long-Range Transportation Planning		\$760,000	\$630,000	\$130,000	
4.	Transportation Improvement Program (TIP) (44.25.00)				
A.	TIP Development & Maintenance	\$50,628	\$50,628	\$0	
Total Transportation Improvement Program		\$50,628	\$50,628	\$0	
5.	Other Activities (44.27.00)				
A.	Miscellaneous Activities and Special Technical Assistance	\$47,655	\$47,655	\$0	
Total Other Activities		\$47,655	\$47,655	\$0	
Grand Total Traditional Funding		\$1,321,283	\$1,068,283	\$253,000	

SPR Expenses for I-81 EIS/NEPA Modeling	\$100,160
SPR Expenses for SMART1 Study	\$0
Total SMTC Program Cost	\$1,421,443

Please note: Where contractual dollars are indicated no FTA monies are involved in contracts unless specified

Allocations / Resources: All fund sources except in-kind services.	
FHWA	\$974,683
FTA 2017 - 2018	\$220,909
FTA 2016 - 2017 Rollover	\$0
SPR Monies from NYSDOT for expenditure on SMART1 and I-81 only	\$100,160
Carry Over Funds	\$125,691
Total Resources Available	\$1,421,443

# UNIFIED PLANNING WORK PROGRAM

FY 2017-2018

## **1. PROGRAM ADMINISTRATION and SUPPORT (44.21.00)**

- 1A. General Administration
- 1B. Public Participation and Website Update
- 1C. Federal Transportation Legislation Examination & Evaluation
- 1D. UPWP Previous Year Closeouts
- 1E. UPWP Maintenance and Development

<b>PROJECT NO:</b>	<b>1A</b>
<b>PROJECT TITLE:</b>	<b>General Administration</b>
<b>OBJECTIVE:</b>	To initiate and properly manage the transportation planning process, ensuring that it is continuous, cooperative, and comprehensive, and in compliance with applicable State and Federal laws and regulations.
<b>METHODOLOGY:</b> The SMTC provides staff support to the Policy, Executive, and Planning Committees, in addition to other permanent and ad-hoc committees. The Staff will implement the work tasks as contained in this UPWP. Other administrative activities include, but are not limited to the following: <ul style="list-style-type: none"> <li>▪ Act as local liaison to NYSDOT, CNYRTA, CNY RPDB, and other transportation related agencies to ensure coordination;</li> <li>▪ Provide administrative support and technical assistance to the Policy, Executive, and Planning Committees, as well as other permanent and ad-hoc committees, as needed;</li> <li>▪ Maintain financial records of all revenues and expenditures;</li> <li>▪ Prepare and distribute meeting notices and agenda packages for all SMTC committees;</li> <li>▪ Prepare certification documentation, agreements, resolutions, memoranda of understanding (MOUs), etc.;</li> <li>▪ Attend NYSDOT, FHWA, FTA and MPO training sessions and other necessary workshops and meetings as appropriate;</li> <li>▪ Maintain agreements between local governmental agencies and the MPO;</li> <li>▪ Prepare and distribute quarterly and semi-annual progress reports and other documents as required;</li> <li>▪ Interact/participate in NYSAMPO, ITE, APA and other professional affiliations, and allow for appropriate resources, travel and training as necessary;</li> <li>▪ Provide funds for the purchase and maintenance of computer hardware and software to support the MPO planning program and related activities, including network maintenance;</li> <li>▪ Continue the SMTC's commitment to comply with Title VI of the Civil Rights Act of 1964;</li> <li>▪ Continue the SMTC's commitment to ensure that all of their programs and activities sufficiently address Environmental Justice principles and procedures, as appropriate; and</li> <li>▪ Continue to comply with the NYSDOT's Disadvantaged Business Enterprise Program.</li> </ul>	
<b>END PRODUCT:</b> The ability to operate the agency as a functional entity; the ability to meet federal and state requirements; the ability to meet local government expectations; Committee Documentation – including: reports, meeting minutes, committee mailings, and related materials; staff involvement in relevant organizations and activities; and adequate computer resources to meet the MPO planning activity requirements.	
<b>Requesting / Participating Agencies:</b>	<b>Funding Sources:</b>
<b>On Behalf Of:</b> SMTC	<u>2017-2018</u> FHWA <sup>(PL)</sup> \$ 208,000 FTA <sup>(Sec. 5303)</sup> \$ 52,000 <hr/> TOTAL \$ 260,000
<b>Participating Agencies:</b> SMTC, CNY RPDB, Other Agencies as Appropriate	

UPWP TASK NO:	1B																
TASK TITLE:	Public Participation and Website Update																
OBJECTIVE:	To enhance the SMTC’s transportation planning process with greater opportunities for public participation, input, involvement, and exposure.																
<b>METHODOLOGY:</b> This task provides for the dissemination of information to the public about the transportation planning program. It also covers receiving public comment and input on transportation planning activities through public information meetings both hosted and attended by the SMTC.  Specific work effort will entail a complete update of the SMTC website.  As part of this task, the SMTC will continue to ensure that the principles of Environmental Justice and Title VI, are included and represented in all public outreach efforts. The techniques for the dissemination of information include, but are not limited to the following: <ul style="list-style-type: none"><li>▪ Newsletters;</li><li>▪ Brochures and flyers;</li><li>▪ Study reports and technical memoranda;</li><li>▪ Public information meetings/workshops and conferences;</li><li>▪ Media releases, press articles, and paid advertisements;</li><li>▪ Direct contact with public/citizens mailing lists;</li><li>▪ Transportation “fairs”, exhibits, or expositions;</li><li>▪ SMTC website (www.smtcmpo.org); and</li><li>▪ SMTC’s Facebook page.</li></ul> Public participation opportunities (public input) include: <ul style="list-style-type: none"><li>▪ Public meetings/workshops;</li><li>▪ Task Forces, Focus Groups;</li><li>▪ Study Advisory Committees and Stakeholders database; and</li><li>▪ Surveys, questionnaires, comment cards, etc.</li></ul>																	
<b>END PRODUCT:</b> Updated agency website. Public participation opportunities/activities, including SMTC newsletters, reports, press releases, maps, and slide presentations, website maintenance, meetings, workshops, etc.																	
<table><tr><th colspan="2">Requesting / Participating Agencies:</th><th colspan="2">Funding Sources:</th></tr><tr><td colspan="2">On Behalf Of: SMTC</td><td colspan="2">2017-2018</td></tr><tr><td colspan="2" rowspan="3">Participating Agencies: SMTC, SMTC Member Agencies, Other Agencies as Appropriate</td><td>FHWA (PL)</td><td>\$ 44,000</td></tr><tr><td>FTA (Sec. 5303)</td><td>\$ 11,000</td></tr><tr><td>TOTAL</td><td>\$ 55,000</td></tr></table>		Requesting / Participating Agencies:		Funding Sources:		On Behalf Of: SMTC		2017-2018		Participating Agencies: SMTC, SMTC Member Agencies, Other Agencies as Appropriate		FHWA (PL)	\$ 44,000	FTA (Sec. 5303)	\$ 11,000	TOTAL	\$ 55,000
Requesting / Participating Agencies:		Funding Sources:															
On Behalf Of: SMTC		2017-2018															
Participating Agencies: SMTC, SMTC Member Agencies, Other Agencies as Appropriate		FHWA (PL)	\$ 44,000														
		FTA (Sec. 5303)	\$ 11,000														
		TOTAL	\$ 55,000														

<b>UPWP TASK NO:</b>	<b>1C</b>		
<b>TASK TITLE:</b>	<b>Federal Transportation Legislation Examination &amp; Evaluation</b>		
<b>OBJECTIVE:</b>	To provide funds to allow the Central Staff to comply with existing and new Federal Legislation and to educate themselves on the changing regulations and requirements.		
<b>METHODOLOGY:</b>	<p>With the passage of the Moving Ahead for Progress in the 21st Century (MAP-21) transportation authorization in July 2012, policies and other regulations are continuing to be released by the USDOT. Additionally, the Fixing America's Surface Transportation (FAST) Act was signed into law in December 2015, that closely mirrors regulations set forth in MAP-21. With the passage of the transportation authorization there are specific regulations and requirements for Metropolitan Transportation Planning. The Federal Highway Administration, the Federal Transit Administration and the New York State Department of Transportation, as well as many other professional organizations, will assist Metropolitan Planning Organizations in interpreting and implementing the new regulations. Compliance with previous legislation is still required as well. This is a necessary compliance item.</p>		
<b>END PRODUCT:</b>	Improved knowledge of the Central Staff regarding the regulations and requirements of the new Transportation Bill as well as required continued compliance of existing legislation.		
<b>Requesting / Participating Agencies:</b>		<b>Funding Sources:</b>	
<b>On Behalf Of:</b> SMTC		<u>2017-2018</u>	
<b>Participating Agencies:</b> SMTC, SMTC Member Agencies, Other Agencies as Appropriate		FHWA <sup>(PL)</sup>	\$ 8,000
		FTA <sup>(Sec. 5303)</sup>	\$ 2,000
		<b>TOTAL</b>	<u>\$ 10,000</u>

<b>UPWP TASK NO:</b>	<b>1D</b>	
<b>TASK TITLE:</b>	<b>UPWP Previous Year Closeouts</b>	
<b>OBJECTIVE:</b>	To provide a task for closing out various UPWP activities from the previous program year.	
<p><b>METHODOLOGY:</b></p> <p>At the end of each program year, there are often various administrative tasks that need to be completed in order to officially close out a project. Such activities typically include the reproduction and distribution of Final Reports that were acknowledged prior to the close of the program year. Since there are no planning activities remaining, the project is not carried over and therefore does not possess a billing code to charge these final administrative tasks.</p> <p>This task is included as a “catch-all” to cover the various tasks necessary to completely close out various projects from the previous program year.</p>		
<p><b>END PRODUCT:</b></p> <p>Completion of required tasks necessary to completely close out various projects/efforts from the previous program year.</p>		
<b>Requesting / Participating Agencies:</b>		<b>Funding Sources:</b>
<b>On Behalf Of:</b> SMTC		<u>2017-2018</u>
<b>Participating Agencies:</b> SMTC, CNY RPDB		FHWA <sup>(PL)</sup> \$ 8,000
		FTA <sup>(Sec. 5303)</sup> \$ 2,000
		<hr/> TOTAL \$ 10,000

<b>UPWP TASK NO:</b>	<b>1E</b>	
<b>TASK TITLE:</b>	<b>UPWP Maintenance and Development</b>	
<b>OBJECTIVE:</b>	Maintain the 2017-2018 Unified Planning Work Program (UPWP) as necessary and develop a subsequent work program accordingly.	
<b>METHODOLOGY:</b>	<p>This task includes all necessary work required to process amendments to the 2017-2018 UPWP and finalize according to Federal regulations.</p> <p>The UPWP indicates local, state, and federal funding of the UPWP work tasks and identifies the participating agencies for completing the work. The UPWP will be developed according to measures deemed necessary to ensure a “3C” planning process, one that is continuing, cooperative, and comprehensive.</p>	
<b>END PRODUCT:</b>	Maintenance of and amendments to the 2017-2018 UPWP as appropriate, as well as development of the 2018-2019 UPWP.	
<b>Requesting / Participating Agencies:</b>		<b>Funding Sources:</b>
<b>On Behalf Of:</b> SMTC		<u>2017-2018</u>
<b>Participating Agencies:</b> SMTC, SMTC Member Agencies, Other Agencies as Appropriate		FHWA <sup>(PL)</sup> \$ 8,000
		FTA <sup>(Sec. 5303)</sup> \$ 2,000
		TOTAL \$ 10,000



## **UNIFIED PLANNING WORK PROGRAM**

**FY 2017-2018**

### **2. SHORT RANGE TRANSPORTATION PLANNING (44.24.00)**

- 2A. Census Data Compilation and/or Analysis
- 2B. Data Collection, Compilation and/or Analysis
- 2C. Geographic Information Systems (GIS) - SMTC
- 2D. Geographic Information Systems (GIS) - Member Agency Assistance

<b>UPWP TASK NO:</b>	<b>2A</b>	
<b>TASK TITLE:</b>	<b>Census Data Compilation and/or Analysis</b>	
<b>OBJECTIVE:</b>	<p>To continue to utilize the U.S. Census data accordingly. Additionally, to provide Census data, information and analysis as input into appropriate SMTC planning studies. This effort supports Long Range Transportation Planning activities, Travel Demand Modeling, Environmental Justice, Title VI, and general transportation planning for the MPO.</p>	
<b>METHODOLOGY:</b>	<p>This UPWP task is an ongoing activity of the SMTC. It allows for staff to utilize various Census data for Long Range Transportation Planning activities, Travel Demand Modeling, Environmental Justice, and general transportation planning completed by the MPO. Additionally, member agencies frequently request that the SMTC create customized census data products for their needs. This project allows for SMTC staff to complete those requests.</p>	
<b>END PRODUCT:</b>	<p>A valuable data set to support the varied planning activities of the MPO.</p>	
<b>Requesting / Participating Agencies:</b>		<b>Funding Sources:</b>
<b>On Behalf Of:</b> SMTC		<u>2017-2018</u> FHWA <sup>(PL)</sup> \$ 3,982 FTA <sup>(Sec. 5303)</sup> \$ 1,018  TOTAL \$ <u>5,000</u>
<b>Participating Agencies:</b> SMTC, Other Agencies as Appropriate		

<b>UPWP TASK NO:</b>	<b>2B</b>	
<b>TASK TITLE:</b>	<b>Data Collection, Compilation and/or Analysis</b>	
<b>OBJECTIVE:</b>	To collect, analyze and utilize various forms of data that assist in the everyday planning operation of the MPO.	
<b>METHODOLOGY:</b> This UPWP task involves the following subcategories: <ul style="list-style-type: none"> <li>i. Transit Data Collection: The collection of transit ridership, scheduling and routing information by both the Central New York Regional Transportation Authority (CNYRTA) and by the SMTC to fill project-specific data needs. It is intended that the CNYRTA will collect this data and provide it to the SMTC in a timely manner. If the CNYRTA is unable to provide the SMTC with the requested data, the SMTC will utilize the funds available for this category to obtain the data elsewhere. The SMTC will provide CNYRTA with project-specific data needs as requested.</li> <li>ii. Vehicle Data Collection: The collection of traffic count data and turning movement count data required in support of the SMTC's planning activities. Additionally, this subcategory will include the ongoing effort of maintaining a central database of vehicle traffic counts for the MPO area.</li> <li>iii. Other Information: Other data as necessary in support of the planning activities of the SMTC.</li> </ul> <p><b>Note: No FTA monies will be used for the contractual portion of this project.</b></p>		
<b>END PRODUCT:</b> The end product is transit, vehicular, and other data sets as necessary. These data are used in the various multi-modal studies and activities undertaken by the SMTC.		
<b>Requesting / Participating Agencies:</b>		<b>Funding Sources:</b>
<b>On Behalf Of:</b> SMTC		<u>2017-2018</u>
<b>Participating Agencies:</b> SMTC, SMTC Member Agencies, Other Agencies as Appropriate		FHWA <sup>(PL)</sup> \$      26,400
		FTA <sup>(Sec. 5303)</sup> \$      6,600
		TOTAL      \$      33,000

<b>UPWP TASK NO:</b>	<b>2C</b>		
<b>TASK TITLE:</b>	<b>Geographic Information Systems (GIS) - SMTC</b>		
<b>OBJECTIVE:</b>	To manage the data and software requirements necessary for maintaining and using the SMTC's Geographic Information System (GIS) to support the MPO planning activities.		
<b>METHODOLOGY:</b>	<p>The SMTC utilizes various transportation-related GIS files as part of routine planning and analysis. As additional information becomes available digitally from the SMTC's member agencies each year, the role of GIS is becoming pervasive.</p> <p>To fully allow the SMTC to utilize GIS in its work program, there are necessary enhancements and routine maintenance efforts that must be undertaken as part of its work program annually. These efforts will allow the SMTC to more fully utilize GIS in relation to vehicle traffic counts, transit ridership, pavement condition monitoring, functional classification, demographic analysis, linking of Travel Demand Model data to GIS data, and other related efforts.</p> <p>Anticipated activities include:</p> <ul style="list-style-type: none"> <li>▪ Coordination with member agencies to ensure that the most recent data is being used;</li> <li>▪ File maintenance of the SMTC's GIS data layers;</li> <li>▪ Linking Census data with relevant SMTC GIS layers;</li> <li>▪ Continuing linking Vehicle Data Collection activities with the GIS database to allow for easy access to the most up-to-date traffic counts for road segments (AADT);</li> <li>▪ Continue development of a GIS layer of turning movement count locations and data sheets to allow for easy access to turning movement count data sets;</li> <li>▪ GIS data acquisition, maintenance, and manipulation as required in support of the various UPWP planning efforts that will utilize GIS data; and</li> <li>▪ Participation on the NYSAMPO GIS Working Group.</li> </ul>		
<b>END PRODUCT:</b>	Enhanced coordination between the SMTC and various Federal, State and local agencies to allow for up-to-date GIS data and files. Additionally, enhanced data sets that support the SMTC's planning efforts and high quality cartographic products as required for various UPWP projects.		
<b>Requesting / Participating Agencies:</b>		<b>Funding Sources:</b>	
<b>On Behalf Of:</b> SMTC		<u>2017-2018</u>	
<b>Participating Agencies:</b> SMTC, SMTC Member Agencies		FHWA <sup>(PL)</sup>	\$ 40,000
		FTA <sup>(Sec. 5303)</sup>	\$ 10,000
		<b>TOTAL</b>	<b>\$ 50,000</b>

<b>UPWP TASK NO:</b>	<b>2D</b>		
<b>TASK TITLE:</b>	<b>Geographic Information Systems (GIS) - Member Agency Assistance</b>		
<b>OBJECTIVE:</b>	To manage the data and software requirements necessary for maintaining and using the SMTC's Geographic Information System (GIS) to support the regional planning needs of the MPO member agencies as they relate to the mission of the SMTC.		
<b>METHODOLOGY:</b>	<p>As outlined in project 2C Geographic Information Systems (GIS) - SMTC, the SMTC's staff is highly capable of using and maintaining GIS data and creating appropriate end products. This item's purpose is to provide those services to SMTC member agencies as they relate to regional planning and the core mission of the SMTC.</p> <p>Anticipated activities include:</p> <ul style="list-style-type: none"> <li>▪ Maintenance of appropriate data libraries;</li> <li>▪ Creation of custom data sets;</li> <li>▪ Map creation and editing;</li> <li>▪ Maintenance of appropriate data libraries; and</li> <li>▪ GIS data acquisition, maintenance, and manipulation as required in support of the various planning efforts that will utilize GIS data.</li> </ul> <p>This GIS support project involves Central Staff providing member agencies with GIS products such as maps and associated spreadsheets on an as needed basis. The GIS maps would be produced for the member agency by request and reviewed by requesting agency.</p>		
<b>END PRODUCT:</b>	Enhanced coordination between the SMTC and various Federal, State and local agencies to allow for up-to-date GIS data and files. Additionally, enhanced data sets that support the member agencies' planning efforts and high quality cartographic products as required for various regional planning projects in support of the SMTC's mission.		
<b>Requesting / Participating Agencies:</b>		<b>Funding Sources:</b>	
<b>On Behalf Of:</b> CNYRPDB		<u>2017-2018</u>	
<b>Participating Agencies:</b> SMTC, SMTC Member Agencies		FHWA <sup>(PL)</sup>	\$ 24,000
		FTA <sup>(Sec. 5303)</sup>	\$ 6,000
		<b>TOTAL</b>	<b>\$ 30,000</b>

## UNIFIED PLANNING WORK PROGRAM

FY 2017-2018

### **3. LONG RANGE TRANSPORTATION PLANNING (44.23.02)**

- 3A. Bicycle/Pedestrian Planning
- 3B. Bridge and Pavement Condition Management System (BPCMS)
- 3C. I-81 NEPA Involvement
- 3D. I-81 Travel Demand Modeling Project
- 3E. MPO Area Regional Planning Initiatives
- 3F. Long Range Transportation Plan
- 3G. Rail, Truck and Transit Planning
- 3H. Traffic Safety
- 3I. Travel Demand Modeling
- 3J. ROW Data Collection and Inventory
- 3K. Syracuse Metropolitan Area Regional Transit Study Ph. 1
- 3L. Erie Boulevard East Pedestrian Study
- 3M. Bicycle and Pedestrian Safety Outreach
- 3N. Work Link
- 3O. Camillus Bike/Ped Assessment
- 3P. CCEO Inland Port Modeling and Analysis Technical Assistance
- 3Q. Centro Rider / Non-Rider Survey
- 3R. Centro Employer Survey
- 3S. Carrier Park Mobility Plan
- 3T. Central DeWitt Bike/Ped Mobility Plan
- 3U. Fayetteville Route 5 Buildout Analysis Assistance
- 3V. City and OCDOT Traffic Count Program
- 3W. Local Comprehensive Plan Assistance
- 3X. Skaneateles Multi Use Corridor

<b>UPWP TASK NO:</b>	<b>3A</b>	
<b>TASK TITLE:</b>	<b>Bicycle/Pedestrian Planning</b>	
<b>OBJECTIVE:</b>	To include multi-modal transportation planning in the MPO process, in order to effectively address bicycle and pedestrian transportation issues. Activities under this task will also contribute to improved air quality in the MPO area.	
<b>METHODOLOGY:</b>	<ul style="list-style-type: none"> <li>▪ Provide input and technical assistance from a multi-modal perspective to all SMTC transportation projects in order that bicycle and pedestrian travel are given appropriate consideration in any given SMTC project;</li> <li>▪ Conduct data collection, identify and assess existing conditions, develop and evaluate alternatives and/or prepare recommendations as required;</li> <li>▪ Continue meetings of the SMTC Bicycle and Pedestrian Community Interest Group;</li> <li>▪ Identify issues of concern within the multi-modal arena for which a focused substantive transportation study may be appropriate;</li> <li>▪ Provide staff support to multi-modal advisory committees and utilize, as appropriate, the committees as resources for providing input to specific multi-modal projects as well as multi-modal program development; and</li> <li>▪ Participate in the NYSAMPO Bicycle/Pedestrian Working Group.</li> </ul>	
<b>END PRODUCT:</b>	Maintenance of a multi-modal component in all SMTC transportation projects, and miscellaneous technical reports and memoranda.	
<b>Requesting / Participating Agencies:</b>		<b>Funding Sources:</b>
<b>On Behalf Of:</b> SMTC		<u>2017-2018</u>
		FHWA <sup>(PL)</sup> \$ 24,000
<b>Participating Agencies:</b> SMTC, Other Agencies as Appropriate		FTA <sup>(Sec. 5303)</sup> \$ 6,000
		TOTAL \$ 30,000



<b>UPWP TASK NO:</b>	<b>3B</b>	
<b>TASK TITLE:</b>	<b>Bridge and Pavement Condition Management System (BPCMS)</b>	
<b>OBJECTIVE:</b>	Complete an annual working document for SMTC member agencies and staff on bridge and pavement conditions within the SMTC planning area.	
<b>METHODOLOGY:</b> A Bridge and Pavement Condition Management System — a centralized database of all Federal-aid highways and bridges for cross jurisdictional comparisons — is beneficial to Metropolitan Planning Organizations. The centralized database will also allow the SMTC and its member agencies to monitor progress toward long-range planning infrastructure goals and performance based planning activities. This database will be linked to the SMTC's Geographic Information System (GIS). Staff will continue providing pavement rating assistance along all federal-aid eligible roadways owned by the City of Syracuse and Onondaga County.		
<b>END PRODUCT:</b> Annual document for SMTC and member agencies of bridge and pavement conditions that includes: (1) comprehensive database of bridge and pavement conditions; (2) comparative database for individual road segments that shows condition by jurisdiction by year for all federal aid eligible roads; and (3) written summary that contains the liberal use of maps, charts, and tables.		
<b>Requesting / Participating Agencies:</b>		<b>Funding Sources:</b>
<b>On Behalf Of:</b> SMTC		<u>2017-2018</u>
<b>Participating Agencies:</b> SMTC, City of Syracuse, NYSDOT, NYSTA, OCDOT, Other Agencies as Appropriate		FHWA <sup>(PL)</sup> \$ 20,000
		FTA <sup>(Sec. 5303)</sup> \$ 0
		TOTAL \$ 20,000

<b>UPWP TASK NO:</b>	<b>3C</b>		
<b>TASK TITLE:</b>	<b>I-81 NEPA Involvement</b>		
<b>OBJECTIVE:</b>	To continue active participation in the NYSDOT's I-81 Viaduct Project environmental process as a participating agency.		
<b>METHODOLOGY:</b>	<p>The I-81 Challenge, a partnership between the SMTC and NYSDOT was completed in 2013. Since then, NYSDOT has initiated the NEPA (National Environmental Policy Act) process for the I-81 viaduct priority area, referred to as I-81 Opportunities.</p> <p>The SMTC will continue its engagement throughout the entirety of the NEPA process as a participating agency. This includes representation on the Community and Economic Development, and Sustainability Stakeholders' Advisory Working Groups.</p>		
<b>END PRODUCT:</b>	Continued agency engagement/involvement in the NYSDOT's I-81 Viaduct project.		
<b>Requesting / Participating Agencies:</b>		<b>Funding Sources:</b>	
<b>On Behalf Of:</b> SMTC		<u>2017-2018</u>	
<b>Participating Agencies:</b> SMTC, CNY RPDB, CNYRTA, City of Syracuse, NYSDOT, OCDOT, SOCPA and Others Agencies as Appropriate.		FHWA <sup>(PL)</sup>	\$ 13,650
		FTA <sup>(Sec. 5303)</sup>	\$ 1,350
		<b>TOTAL</b>	<u>\$ 15,000</u>

<b>UPWP TASK NO:</b>	<b>3D</b>	
<b>TASK TITLE:</b>	<b>I-81 Travel Demand Modeling Project</b>	
<b>OBJECTIVE:</b>	To utilize the SMTC's Travel Demand Model to evaluate the existing and future traffic conditions along I-81 and surrounding local streets in the MPO area. This analysis will be performed for a variety of different potential alternatives and scenarios in the NYSDOT's NEPA process.	
<b>METHODOLOGY:</b> <p>All I-81 Opportunities travel demand modeling will be completed by the NYSDOT for the evaluation of different alternative scenarios. The SMTC will utilize its Travel Demand Model to re-run the scenarios for cross-evaluation and review.</p> <p>The major elements of this effort are to:</p> <ul style="list-style-type: none"> <li>▪ Use the travel demand model to evaluate various potential concepts for the I-81 corridor (and permutations of those concepts), based on: <ul style="list-style-type: none"> <li>- impacts to the transportation network of the greater metropolitan region; and</li> <li>- impacts to regional interstate access and general mobility, with an emphasis on the movement of goods and people.</li> </ul> </li> </ul> <p><b>Note: No FTA monies will be used for the contractual portion of this project.</b></p>		
<b>END PRODUCT:</b> <p>This task will result in several detailed model outputs and analysis associated with the various alternatives examined.</p>		
<b>Requesting / Participating Agencies:</b>		<b>Funding Sources:</b>
<b>On Behalf Of:</b> NYSDOT		<u>2017-2018</u>
<b>Participating Agencies:</b> SMTC, SMTC Member Agencies, Other Agencies as Appropriate		FHWA <sup>(PL)</sup> \$ 9,000
		FTA <sup>(Sec. 5303)</sup> \$ 1,000
		<b>TOTAL</b> \$ <u>10,000</u>

(plus SPR expenses incurred)

<b>UPWP TASK NO:</b>	3E	
<b>TASK TITLE:</b>	MPO Regional Planning Initiatives	
<b>OBJECTIVE:</b>	To allow the SMTC to be actively involved in the many important regional planning initiatives that either currently exist or may begin over the program year.	
<b>METHODOLOGY:</b>	<p>Numerous significant planning initiatives either currently exist or may come to fruition over the coming program year. This project is to allow for the SMTC to participate in these initiatives. Additionally, member agencies may request SMTC specific planning, analysis, or related activities in regards to these initiatives via this task. Examples of past work that fall under this category include the City of Syracuse Comprehensive Planning, Central New York Regional Sustainability Planning and other related activities.</p>	
<b>END PRODUCT:</b>	Active SMTC participation in important regional planning initiatives.	
<b>Requesting / Participating Agencies:</b>		<b>Funding Sources:</b>
<b>On Behalf Of:</b> SMTC/Various		<u>2017-2018</u>
<b>Participating Agencies:</b> SMTC, SMTC Member Agencies, Other Agencies as Appropriate		FHWA <sup>(PL)</sup> \$ 28,500 FTA <sup>(Sec. 5303)</sup> \$ 1,500  TOTAL \$ 30,000

<b>UPWP TASK NO:</b>	<b>3F</b>	
<b>TASK TITLE:</b>	<b>Long Range Transportation Plan</b>	
<b>OBJECTIVE:</b>	Implement the performance based, outcome-driven transportation planning activities contained in the 2050 Long Range Transportation Plan (LRTP).	
<p><b>METHODOLOGY:</b></p> <p>As required by law, each MPO must have a complete and up-to-date LRTP. Federal Regulations dictate that the Plan be updated a minimum of every five years in air quality “attainment areas.”</p> <p>Efforts to develop a completely new LRTP which included new goals and objectives, performance measures and targets were formally adopted by the SMTC Policy Committee in September 2015. The “tracking” of performance measures will be investigated to establish an appropriate procedure/process for the SMTC.</p> <p>All tasks and activities conducted as part of this project will ensure that the principles and procedures of Environmental Justice and Title VI receive the appropriate attention.</p>		
<p><b>END PRODUCT:</b></p> <p>Adherence to Transportation Performance Management provisions of MAP-21 and the FAST Act.</p>		
<b>Requesting / Participating Agencies:</b>		<b>Funding Sources:</b>
<b>On Behalf Of:</b> SMTC		<u>2017-2018</u>
<b>Participating Agencies:</b> SMTC, SMTC Member Agencies, Other Agencies as Appropriate		FHWA <sup>(PL)</sup> \$ 45,000
		FTA <sup>(Sec. 5303)</sup> \$ 0
		TOTAL \$ 45,000

<b>UPWP TASK NO:</b>	<b>3G</b>
<b>TASK TITLE:</b>	<b>Rail, Truck and Transit Planning</b>
<b>OBJECTIVE:</b>	To include multi-modal transportation planning in the MPO process, in order to effectively address rail, truck and transit transportation issues, for moving both people and freight, as appropriate.
<b>METHODOLOGY:</b> <ul style="list-style-type: none"> <li>▪ Provide input and technical assistance from a multi-modal perspective to all SMTC transportation projects in order that rail, truck and transit travel are given appropriate consideration to any given SMTC project;</li> <li>▪ Conduct data collection, identify and assess existing conditions, develop and evaluate alternatives and/or prepare recommendations as required;</li> <li>▪ Identify issues of concern within the multi-modal arena for which a focused substantive transportation study may be appropriate;</li> <li>▪ Provide staff support to multi-modal advisory committees and utilize, as appropriate, the committees as resources for providing input to specific multi-modal projects as well as multi-modal program development; and</li> <li>▪ Participate in the NYSAMPO Freight and Transit Working Groups.</li> </ul> <p>-----</p> <p>Additionally, this task will include specific sub-items.</p> <ol style="list-style-type: none"> <li>1) Completion of a freight profile that is substantially underway.</li> <li>2) Begin an update to the area's Coordinated Public Transit - Human Services Transportation Plan.</li> </ol>	
<b>END PRODUCT:</b> Maintenance of a multi-modal component in all SMTC transportation projects, and miscellaneous technical reports and memoranda, as appropriate.	
<b>Requesting / Participating Agencies:</b>	<b>Funding Sources:</b>
<b>On Behalf Of:</b> SMTC	<u>2017-2018</u> FHWA <sup>(PL)</sup> \$ 45,000 FTA <sup>(Sec. 5303)</sup> \$ 0  TOTAL \$ 45,000
<b>Participating Agencies:</b> SMTC, CNYRTA, SMTC Member Agencies, Other Agencies as Appropriate	

<b>UPWP TASK NO:</b>	<b>3H</b>	
<b>TASK TITLE:</b>	<b>Traffic Safety</b>	
<b>OBJECTIVE:</b> To participate in various Traffic Safety initiatives as appropriate.		
<b>METHODOLOGY:</b> Integrating safety into the transportation planning process has been the focus of various Federal and State initiatives and is strongly encouraged within Metropolitan Planning Organizations.  In addition, this task includes the participation of staff on a NYSAMPO Safety Working Group that is examining various traffic safety activities utilized throughout the state and their potential use within each MPO. Also, the Working Group will reach out to other state agencies such as the Department of Motor Vehicles and the Department of Transportation to better coordinate safety planning activities between MPOs and these agencies.		
<b>END PRODUCT:</b> Increased awareness regarding various Traffic Safety issues, and further integration of traffic safety into the transportation planning process.		
<b>Requesting / Participating Agencies:</b>		<b>Funding Sources:</b>
<b>On Behalf Of:</b> SMTC		<u>2017-2018</u>
<b>Participating Agencies:</b> SMTC, SMTC Member Agencies, Other Agencies as Appropriate		FHWA <sup>(PL)</sup> \$ 8,900 FTA <sup>(Sec. 5303)</sup> \$ 1,100  TOTAL \$ 10,000



<b>UPWP TASK NO:</b>	<b>3I</b>	
<b>TASK TITLE:</b>	<b>Travel Demand Modeling</b>	
<b>OBJECTIVE:</b>	To improve and utilize the SMTC's Travel Demand Model in support of the planning needs of the SMTC and its member agencies.	
<b>METHODOLOGY:</b> This task involves the following: <ul style="list-style-type: none"> <li>▪ Maintenance of the existing model. This requires utilization of additional data sets and possible consultant efforts to be sure that the agency's model will meet SMTC's needs;</li> <li>▪ Continue training of existing staff on the best way(s) to utilize the model in support of the SMTC and its member agencies;</li> <li>▪ Utilization of the model in support of existing projects and member agency requests for scenario planning; and</li> <li>▪ Participation on the NYSAMPO Travel Demand Modeling Working Group.</li> </ul> <p><b>Note: No FTA monies will be used for the contractual portion of this project.</b></p>		
<b>END PRODUCT:</b> A maintained Travel Demand Model that meets the needs of the SMTC as well as the member agencies. In addition the model must comply with federal and state requirements for air quality and conformity.		
<b>Requesting / Participating Agencies:</b>		<b>Funding Sources:</b>
<b>On Behalf Of:</b> SMTC		<u>2017-2018</u> FHWA <sup>(PL)</sup> \$ 50,000 FTA <sup>(Sec. 5303)</sup> \$ 0
<b>Participating Agencies:</b> SMTC, SMTC Member Agencies		TOTAL \$ <u>50,000</u>

<b>UPWP TASK NO:</b>	3J	
<b>TASK TITLE:</b>	ROW Data Collection and Inventory	
<b>OBJECTIVE:</b>	To develop a detailed inventory of utility and abandoned road and railroad right-of-ways.	
<b>METHODOLOGY:</b> This task involves outreach to various municipalities and utility owners for the purposes of obtaining right-of-way information for use in future bicycle, pedestrian, road, and freight planning activities. Efforts will identify utility service roads/easements and abandoned road and railroad right-of-way corridors and document findings. A scope of work will be developed and approved by the SMTC Planning Committee prior to project initiation. This project will be completed in the 2017-2018 work program.		
<b>END PRODUCT:</b> Assemblage of pertinent ROW information throughout the SMTC area.		
<b>Requesting / Participating Agencies:</b>		<b>Funding Sources:</b>
On Behalf Of: SMTC		<u>2017-2018</u> FHWA <sup>(PL)</sup> \$ 10,000 FTA <sup>(Sec. 5303)</sup> \$ 0 <hr/> TOTAL \$ 10,000
Participating Agencies: SMTC, SMTC Member Agencies, Other Agencies as Appropriate		

UPWP TASK NO:	3K								
TASK TITLE:	Syracuse Metropolitan Area Regional Transit Study Phase 1								
OBJECTIVE:	To build on the Syracuse Transit Systems Analysis effort completed as part of The I-81 Challenge to refine and develop enhancements along select corridors for advancement into NEPA.								
<b>METHODOLOGY:</b> <p>The Syracuse Transit System Analysis component of the The I-81 Challenge was a high-level examination of transit mobility challenges in the Syracuse metropolitan area that will serve as a “long range” transit vision for this area. The Syracuse Metropolitan Area Regional Transit Study Phase 1 (SMART 1) is intended to help Centro enter into the NEPA process for an advanced transit system.</p> <p>SMART 1, which is a significant collaborative effort between Centro, City of Syracuse, Onondaga County, NYSDOT and SMTC personnel, with assistance from the Federal Transit Administration, focuses on an examination and analysis of two distinct corridors called out in the Syracuse Transit System Analysis; Regional Market/Destiny/Syracuse University and James Street/South Avenue. SMTC staff will lead the planning effort up to initiation of the NEPA process. Consultant activities commenced as part of the 2015-2016 program. Public engagement to date has included two public meetings, nine “pop-up” events and three Focus Groups.</p> <p>The SMART 1 project will be completed in 2017.</p>									
<b>END PRODUCT:</b> Documentation suitable for Centro to advance into the NEPA process.									
<table><tr><th>Requesting / Participating Agencies:</th><th>Funding Sources:</th></tr><tr><td><b>On Behalf Of:</b> CNYRTA</td><td><u>2017-2018</u></td></tr><tr><td rowspan="3"><b>Participating Agencies:</b> SMTC, SMTC Member Agencies, Other Agencies as Appropriate</td><td>FHWA <sup>(PL)</sup> \$ 84,500</td></tr><tr><td>FTA <sup>(Sec. 5303)</sup> \$ 45,500</td></tr><tr><td>TOTAL \$ 130,000</td></tr></table>		Requesting / Participating Agencies:	Funding Sources:	<b>On Behalf Of:</b> CNYRTA	<u>2017-2018</u>	<b>Participating Agencies:</b> SMTC, SMTC Member Agencies, Other Agencies as Appropriate	FHWA <sup>(PL)</sup> \$ 84,500	FTA <sup>(Sec. 5303)</sup> \$ 45,500	TOTAL \$ 130,000
Requesting / Participating Agencies:	Funding Sources:								
<b>On Behalf Of:</b> CNYRTA	<u>2017-2018</u>								
<b>Participating Agencies:</b> SMTC, SMTC Member Agencies, Other Agencies as Appropriate	FHWA <sup>(PL)</sup> \$ 84,500								
	FTA <sup>(Sec. 5303)</sup> \$ 45,500								
	TOTAL \$ 130,000								

(plus SPR expenses incurred)

<b>UPWP TASK NO:</b>	3L	
<b>TASK TITLE:</b>	Erie Boulevard East Pedestrian Study	
<b>OBJECTIVE:</b>	To conduct a comprehensive study to analyze and prioritize pedestrian needs along the Erie Boulevard corridor, specifically concerned with pedestrian crossings from Beech Street in the City of Syracuse to Routes 5 and 92 in the Town of DeWitt.	
<b>METHODOLOGY:</b>	<p>Erie Boulevard East is a commercial district with divided roadways and limited pedestrian accommodations. There have been several pedestrian safety incidents along the corridor involving pedestrians attempting to cross the heavily traveled boulevard. This project will conduct an investigation of the existing sidewalk system and pedestrian accident history along Erie Boulevard from Beech Street to Routes 5 and 92 and identify pedestrian needs and improvement opportunities. Substantial data collection and preliminary efforts have begun already.</p> <p>This project will be completed in the 2017-2018 work program.</p>	
<b>END PRODUCT:</b>	A final document that outlines the conditions, needs, and recommendations.	
<b>Requesting / Participating Agencies:</b>		<b>Funding Sources:</b>
<b>On Behalf Of:</b> City of Syracuse and NYSDOT		<u>2017-2018</u>
<b>Participating Agencies:</b> SMTC, SMTC Member Agencies, Other Agencies as Appropriate		FHWA <sup>(PL)</sup> \$ 30,000 FTA <sup>(Sec. 5303)</sup> \$ 0  TOTAL \$ 30,000



<b>UPWP TASK NO:</b>	3N	
<b>TASK TITLE:</b>	Work Link	
<b>OBJECTIVE:</b>	To begin a comprehensive and collective discussion with member agencies, transportation providers, businesses and non-profit organizations on the feasibility and establishment of transportation to work services for low-income residents.	
<b>METHODOLOGY:</b>	<p>This project commenced during the 2016-2017 work program. Efforts to date include:</p> <ul style="list-style-type: none"> <li>* Scope of work creation and approval;</li> <li>* Identification and research into geographic clusters of employment opportunities; and</li> <li>* Technical analysis of transit service availability and employment clusters.</li> </ul> <p>Transportation alternatives will be examined in further detail and then recommended as part of the final documentation.</p> <p>This project will be completed during the 2017-2018 work program.</p>	
<b>END PRODUCT:</b>	A final document summarizing the outreach and analysis.	
<b>Requesting / Participating Agencies:</b>		<b>Funding Sources:</b>
<b>On Behalf Of:</b> City of Syracuse and SOCPA		<u>2017-2018</u>
<b>Participating Agencies:</b> SMTC, SMTC Member Agencies, Other Agencies as Appropriate		FHWA <sup>(PL)</sup> \$ 24,000 FTA <sup>(Sec. 5303)</sup> \$ 6,000  TOTAL \$ 30,000

UPWP TASK NO:	30								
TASK TITLE:	Camillus Bike/Ped Assessment								
OBJECTIVE:	To assess the existing transportation system, identify bicycle and pedestrian access issues, and identify possible facility installation locations along various corridors in the Town of Camillus.								
<b>METHODOLOGY:</b> The intent of this project is to complete an assessment and review of potential bicycle and pedestrian improvements along Knowell Rd., Township 5 Boulevard, Milton Ave., and Hinsdale Rd in the Town of Camillus.  Specific elements of this effort include: <ul style="list-style-type: none"><li>Data collection, inventory and analysis (traffic, accident data, land use, socioeconomics, infrastructure geometrics);</li><li>Public input with facility owner and stakeholders; and</li><li>Recommended planning level designs.</li></ul> A scope of work was developed and approved by the SMTC Planning Committee in the 2016-2017 program. This project will be completed during the 2017-2018 work program.									
<b>END PRODUCT:</b> A final document that outlines the conditions, needs, and recommendations.									
<table><tr><th>Requesting / Participating Agencies:</th><th>Funding Sources:</th></tr><tr><td><b>On Behalf Of:</b> Town of Camillus</td><td><u>2017-2018</u></td></tr><tr><td rowspan="3"><b>Participating Agencies:</b> SMTC, SMTC Member Agencies, Other Agencies as Appropriate</td><td>FHWA <sup>(PL)</sup> \$ 24,000</td></tr><tr><td>FTA <sup>(Sec. 5303)</sup> \$ 6,000</td></tr><tr><td>TOTAL \$ 30,000</td></tr></table>		Requesting / Participating Agencies:	Funding Sources:	<b>On Behalf Of:</b> Town of Camillus	<u>2017-2018</u>	<b>Participating Agencies:</b> SMTC, SMTC Member Agencies, Other Agencies as Appropriate	FHWA <sup>(PL)</sup> \$ 24,000	FTA <sup>(Sec. 5303)</sup> \$ 6,000	TOTAL \$ 30,000
Requesting / Participating Agencies:	Funding Sources:								
<b>On Behalf Of:</b> Town of Camillus	<u>2017-2018</u>								
<b>Participating Agencies:</b> SMTC, SMTC Member Agencies, Other Agencies as Appropriate	FHWA <sup>(PL)</sup> \$ 24,000								
	FTA <sup>(Sec. 5303)</sup> \$ 6,000								
	TOTAL \$ 30,000								

<b>UPWP TASK NO:</b>	<b>3P</b>	
<b>TASK TITLE:</b>	<b>CCEO Inland Port Modeling and Analysis Technical Assistance</b>	
<b>OBJECTIVE:</b>	To provide travel demand modeling assistance for proposed inland port sites in Onondaga County.	
<b>METHODOLOGY:</b> <p>This task will utilize the SMTC's existing Travel Demand Model to provide planning level analysis of various scenarios associated with the development of an inland port. Number of sites for consideration will be discussed with CenterState CEO prior to any work commencing.</p> <p>Additionally, a scope of work will be developed and approved by the SMTC Planning Committee prior to project initiation.</p>		
<b>END PRODUCT:</b> <p>Detailed traffic data for various scenarios.</p>		
<b>Requesting / Participating Agencies:</b>		<b>Funding Sources:</b>
<b>On Behalf Of:</b> CenterState CEO		<u>2017-2018</u>
<b>Participating Agencies:</b> SMTC, SMTC Member Agencies, Other Agencies as Appropriate		FHWA <sup>(PL)</sup> \$ 4,000
		FTA <sup>(Sec. 5303)</sup> \$ 1,000
		TOTAL \$ <u>5,000</u>



<b>UPWP TASK NO:</b>	3Q	
<b>TASK TITLE:</b>	Centro Rider and Non-Rider Survey	
<b>OBJECTIVE:</b>	To conduct a survey and analysis of persons who use the Centro system and of those who do not.	
<b>METHODOLOGY:</b> <p>A scope of work was developed and approved by the SMTC Planning Committee in the 2016-2017 work program. Survey instruments have been created to collect information regarding:</p> <ul style="list-style-type: none"> <li>* Demographics;</li> <li>* Reasons why the Centro system is being used or why non-riders do not use the system;</li> <li>* System affordability; and</li> <li>* Geographic preferences.</li> </ul> <p>This project will be completed during the 2017-2018 work program.</p>		
<b>END PRODUCT:</b> <p>Survey summary and analysis.</p>		
<b>Requesting / Participating Agencies:</b>		<b>Funding Sources:</b>
<b>On Behalf Of:</b> CNYRTA  <b>Participating Agencies:</b> SMTC, SMTC Member Agencies, Other Agencies as Appropriate		<u>2017-2018</u> FHWA <sup>(PL)</sup> \$ 28,000 FTA <sup>(Sec. 5303)</sup> \$ 7,000 <hr/> TOTAL \$ 35,000

<b>UPWP TASK NO:</b>	<b>3R</b>		
<b>TASK TITLE:</b>	<b>Centro Employer Survey</b>		
<b>OBJECTIVE:</b>	To conduct a survey and analysis of various employers whose employees may or may not use the Centro system.		
<b>METHODOLOGY:</b>	<p>A scope of work was developed and approved by the SMTC Planning Committee in the 2016-2017 work program. A survey instrument was created to collect the following information and transmitted to over 500 individual businesses in Onondaga County:</p> <ul style="list-style-type: none"> <li>* Use of Centro system;</li> <li>* Importance of public transportation to their business; and</li> <li>* Interest in subsidizing public transportation.</li> </ul> <p>Additional follow-up relying on in-person or phone conversations with a variety of employers throughout Onondaga County will take place as necessary pending review of responses and discussion with Centro.</p>		
<b>END PRODUCT:</b>	Survey summary and analysis.		
<b>Requesting / Participating Agencies:</b>		<b>Funding Sources:</b>	
<b>On Behalf Of:</b> CNYRTA		<u>2017-2018</u>	
<b>Participating Agencies:</b> SMTC, SMTC Member Agencies, Other Agencies as Appropriate		FHWA <sup>(PL)</sup>	\$ 8,000
		FTA <sup>(Sec. 5303)</sup>	\$ 2,000
		<b>TOTAL</b>	<u>\$ 10,000</u>

<b>UPWP TASK NO:</b>	<b>3S</b>		
<b>TASK TITLE:</b>	<b>Carrier Park Mobility Plan</b>		
<b>OBJECTIVE:</b>	To assist the Town of DeWitt in providing/identifying more bicycle and pedestrian facilities to connect destinations throughout the town with this site.		
<b>METHODOLOGY:</b>	<p>The intent of this project is to complete an assessment and review of possible bicycle and pedestrian improvements throughout the Hotel District/Carrier Park complex in the Town of DeWitt.</p> <p>Specific elements of this effort include but may not be limited to:</p> <ul style="list-style-type: none"> <li>▪ Data collection, inventory and analysis (traffic, accident data, land use, socioeconomics, infrastructure geometrics);</li> <li>▪ Public input with facility owner and stakeholders; and</li> <li>▪ Recommended planning level designs.</li> </ul> <p>A scope of work was approved by the SMTC Planning Committee and work is underway.</p>		
<b>END PRODUCT:</b>	A final document that outlines the conditions, needs, and recommendations.		
<b>Requesting / Participating Agencies:</b>		<b>Funding Sources:</b>	
<b>On Behalf Of:</b> Town of DeWitt		<u>2017-2018</u>	
<b>Participating Agencies:</b> SMTC, SMTC Member Agencies, Other Agencies as Appropriate		FHWA <sup>(PL)</sup>	\$ 28,000
		FTA <sup>(Sec. 5303)</sup>	\$ 7,000
		<b>TOTAL</b>	<b>\$ 35,000</b>

<b>UPWP TASK NO:</b>	<b>3T</b>		
<b>TASK TITLE:</b>	<b>Central DeWitt Bike/Ped Mobility Plan</b>		
<b>OBJECTIVE:</b>	To assist the Town of DeWitt in providing/identifying more bicycle and pedestrian facilities to connect destinations throughout the town.		
<b>METHODOLOGY:</b>	<p>The intent of this project is to develop a bicycle and pedestrian mobility plan for the central part of the Town of DeWitt, identifying opportunities for adding/improving bicycle and pedestrian infrastructure to a number of roadways. A scope of work was developed and approved by the SMTC Planning Committee during the 2016-2017 work program.</p> <p>Specific elements of this effort include:</p> <ul style="list-style-type: none"> <li>▪ Data collection, inventory and analysis (traffic, accident data, land use, socioeconomics, infrastructure geometrics);</li> <li>▪ Public input with facility owner and stakeholders; and</li> <li>▪ Recommended planning level designs.</li> </ul> <p>This project will be completed in the 2017-2018 work program.</p>		
<b>END PRODUCT:</b>	A final document that outlines the conditions, needs, and recommendations.		
<b>Requesting / Participating Agencies:</b>		<b>Funding Sources:</b>	
<b>On Behalf Of:</b> Town of DeWitt		<u>2017-2018</u>	
<b>Participating Agencies:</b> SMTC, SMTC Member Agencies, Other Agencies as Appropriate		FHWA <sup>(PL)</sup>	\$ 24,000
		FTA <sup>(Sec. 5303)</sup>	\$ 6,000
		<b>TOTAL</b>	<b>\$ 30,000</b>

<b>UPWP TASK NO:</b>	3U	
<b>TASK TITLE:</b>	Fayetteville Route 5 Buildout Analysis Assistance	
<b>OBJECTIVE:</b>	To provide an analysis of various scenario concepts for the buildout of Route 5 within the Village of Fayetteville.	
<b>METHODOLOGY:</b> <p>The historical district of the Village of Fayetteville is impacted by the number of pass-through vehicles in the morning and evening and is a growing concern to maintaining the historical character and current footprint of the roadway.</p> <p>This task will evaluate and model traffic patterns in the village, identify potential solutions to mitigate morning and evening rush hour traffic, and identify methods for the village to continue to develop existing under-utilized properties. Data collection and technical analysis has occurred to date under this project and will continue in the 2017-2018 work program.</p>		
<b>END PRODUCT:</b> <p>A final document including plausible traffic mitigation measures.</p>		
<b>Requesting / Participating Agencies:</b>		<b>Funding Sources:</b>
<b>On Behalf Of:</b> Village of Fayetteville, SOCPA		<u>2017-2018</u>
<b>Participating Agencies:</b> SMTC, SMTC Member Agencies, Other Agencies as Appropriate		FHWA <sup>(PL)</sup> \$ 28,000 FTA <sup>(Sec. 5303)</sup> \$ 7,000  TOTAL \$ 35,000

<b>UPWP TASK NO:</b>	3V	
<b>TASK TITLE:</b>	City and OCDOT Traffic Count Program	
<b>OBJECTIVE:</b>	To develop a fully operational traffic count database and traffic count program for the City of Syracuse (City) and the Onondaga County Department of Transportation (OCDOT).	
<b>METHODOLOGY:</b> An annual traffic count program for the City of Syracuse and the Onondaga County Department of Transportation will be established. This recurring program will gather numerous machine counts per year for data entry purposes. Tube counts will allow for bi-directional identification and include classification, speed, and volume data. This project hopes to eventually have 100 percent of the City (federal-aid eligible) and OCDOT roads counted on a rotating cycle.		
<p><b>Note: No FTA monies will be used for the contractual portion of this project.</b></p>		
<b>END PRODUCT:</b> Updated traffic count database and traffic count data.		
<b>Requesting / Participating Agencies:</b>		<b>Funding Sources:</b>
<b>On Behalf Of:</b> City of Syracuse and OCDOT		<u>2017-2018</u>
<b>Participating Agencies:</b> SMTC, SMTC Member Agencies, Other Agencies as Appropriate		FHWA <sup>(PL)</sup> \$     32,000 FTA <sup>(Sec. 5303)</sup> \$     8,000  TOTAL                 \$     40,000

<b>UPWP TASK NO:</b>	<b>3W</b>		
<b>TASK TITLE:</b>	<b>Local Comprehensive Plan Assistance</b>		
<b>OBJECTIVE:</b> To provide staff assistance to municipalities completing comprehensive plan updates.			
<b>METHODOLOGY:</b> Funding will be utilized by SMTC staff to assist municipalities undertaking comprehensive plan updates. Preliminary scope of work includes items such as: <ul style="list-style-type: none"> <li>* Meeting participation;</li> <li>* Existing conditions data collection and analysis;</li> <li>* Mapping services;</li> <li>* Travel demand modeling to test buildout scenarios; and</li> <li>* Traffic operations analysis.</li> </ul> SOCPA will be the coordinating entity that will determine the priority and level of effort required for each entity within the bounds of the SMTC's function.			
<b>END PRODUCT:</b> Various output elements in support of the local plans being developed. This project will not be creating these plans, just assisting with support services.			
<b>Requesting / Participating Agencies:</b>		<b>Funding Sources:</b>	
<b>On Behalf Of:</b> SOCPA		<u>2017-2018</u>	
<b>Participating Agencies:</b> SMTC, SMTC Member Agencies, Other Agencies as Appropriate		FHWA <sup>(PL)</sup>	\$ 45,000
		FTA <sup>(Sec. 5303)</sup>	\$ 5,000
		<b>TOTAL</b>	\$ <u>50,000</u>

<b>UPWP TASK NO:</b>	<b>3X</b>	
<b>TASK TITLE:</b>	<b>Skaneateles Multi Use Corridor</b>	
<b>OBJECTIVE:</b>	To conduct a comprehensive analysis of connected trails, bike lanes and/or bike paths to create a multi-use corridor from the Village of Skaneateles north into the Town of Skaneateles.	
<b>METHODOLOGY:</b> A scope of work was developed and approved by the SMTC Planning Committee in the 2016-2017 work program. Study efforts include: <ul style="list-style-type: none"> <li>▪ Data collection, inventory, and analysis (traffic, accident data, land use, socioeconomics, infrastructure geometrics);</li> <li>▪ Public input with facility owner and stakeholders; and</li> <li>▪ Recommended planning level designs.</li> </ul> <p>This project will be completed as part of the 2017-2018 work program.</p>		
<b>END PRODUCT:</b> A final document that outlines the conditions, needs, and recommendations.		
<b>Requesting / Participating Agencies:</b>		<b>Funding Sources:</b>
<b>On Behalf Of:</b> Town of Skaneateles		<u>2017-2018</u>
<b>Participating Agencies:</b> SMTC, SMTC Member Agencies, Other Agencies as Appropriate		FHWA <sup>(PL)</sup> \$     16,000 FTA <sup>(Sec. 5303)</sup> \$     4,000  TOTAL                 \$     20,000



## UNIFIED PLANNING WORK PROGRAM

FY 2017-2018

### **4. TRANSPORTATION IMPROVEMENT PROGRAM (TIP) (44.25.00)**

4A. TIP Development and Maintenance

<b>UPWP TASK NO:</b>	<b>4A</b>	
<b>TASK TITLE:</b>	<b>TIP Development and Maintenance</b>	
<b>OBJECTIVE:</b>	Maintain and update the Transportation Improvement Program (TIP). Activities for this project will also ensure that the TIP is in compliance with all federal and state requirements.	
<b>METHODOLOGY:</b> The TIP will be maintained, amended, and updated as necessary, in cooperation with the New York State Department of Transportation (NYSDOT), units of local government, and the Central New York Regional Transportation Authority (CNYRTA). The 2017-2021 TIP was adopted by the SMTC Policy Committee in June 2016.		
<b>END PRODUCT:</b> A Transportation Improvement Program that is maintained, kept up to date, and in compliance with all Federal and State requirements.		
<b>Requesting / Participating Agencies:</b>		<b>Funding Sources:</b>
<b>On Behalf Of:</b> SMTC		<u>2017-2018</u>
<b>Participating Agencies:</b> SMTC, SMTC Member Agencies, Other Agencies as Appropriate		FHWA <sup>(PL)</sup> \$ 45,565 FTA <sup>(Sec. 5303)</sup> \$ 5,063  TOTAL \$ 50,628

## UNIFIED PLANNING WORK PROGRAM

FY 2017-2018

### 5. OTHER ACTIVITIES (44.27.00)

5A. Miscellaneous Activities and Special Technical Assistance

<b>UPWP TASK NO:</b>	<b>5A</b>	
<b>TASK TITLE:</b>	<b>Miscellaneous Activities and Special Technical Assistance</b>	
<b>OBJECTIVE:</b>	This task covers miscellaneous projects that are assigned from time to time, both short-term and infrequent long-term projects that do not warrant individual UPWP projects. Additionally, this task provides for special technical assistance to member agencies, local governments, and other agencies and/or organizations as appropriate.	
<b>METHODOLOGY:</b>	<p>From time-to-time, miscellaneous projects are assigned to staff. Many are one time studies or reports, while other tasks are more long-term in nature, and are infrequent enough or so limited in scope of MPO participation, and, therefore, do not warrant a separate UPWP project.</p> <p>Tasks may include such activities as participation in various New York State MPO statewide initiatives and reviewing proposed Federal regulations.</p> <p>This task also allows the SMTC to provide technical assistance to member agencies, local governments, and other agencies/organizations which were not foreseen or known during the preparation of the annual UPWP.</p>	
<b>END PRODUCT:</b>	Various activities, technical assistance, research, analysis, published documents, memoranda, brief reports, etc., as appropriate.	
<b>Requesting / Participating Agencies:</b>		<b>Funding Sources:</b>
<b>On Behalf Of:</b> SMTC		<u>2017-2018</u>
<b>Participating Agencies:</b> SMTC, SMTC Member Agencies, Other Agencies as Appropriate		FHWA <sup>(PL)</sup> \$ 42,877 FTA <sup>(Sec. 5303)</sup> \$ 4,778  TOTAL \$ 47,655

## UNIFIED PLANNING WORK PROGRAM

FY 2017-2018

### 6. **BUDGET TABLES**

2017-2018

TABLE 1 - SUMMARY BUDGET

TABLE 2 - SUMMARY BUDGET - FEDERAL PROGRAMS ONLY

TABLE 3 - FHWA BUDGETS

TABLE 4 - FTA BUDGETS

TABLE 5 - TOTAL AUDITABLE BUDGET

TABLE 6 - STATE PLANNING & RESEARCH FUNDING

TABLE 1

2017 - 2018 SUMMARY BUDGET

TASK BUDGET									
TASK		FUNDING SOURCE							
ID	Category	FHWA - PL	FTA	FTA %	Total Federal	Total Non-Federal	State	Local	Total
1.	Program Administration and Support (44.21.00)								
A.	General Administration	\$208,000	\$52,000	20%	\$260,000	\$65,000	\$48,750	\$16,250	\$325,000
B.	Public Participation and Web Site Update	\$44,000	\$11,000	20%	\$55,000	\$13,750	\$10,313	\$3,438	\$68,750
C.	Federal Transportation Legislation Examination and Evaluation	\$8,000	\$2,000	20%	\$10,000	\$2,500	\$1,875	\$625	\$12,500
D.	UPWP Previous Year Closeouts	\$8,000	\$2,000	20%	\$10,000	\$2,500	\$1,875	\$625	\$12,500
E.	UPWP Maintenance and Development	\$8,000	\$2,000	20%	\$10,000	\$2,500	\$1,875	\$625	\$12,500
	Total Program Administration and Support	\$276,000	\$69,000	20%	\$345,000	\$86,250	\$64,688	\$21,563	\$431,250
2.	Short-Range Transportation Planning (44.24.00)								
A.	Census Data Compilation and/or Analysis	\$3,982	\$1,018	20%	\$5,000	\$1,250	\$938	\$313	\$6,250
B.	Data Collection, Compilation and/or Analysis	\$26,400	\$6,600	20%	\$33,000	\$8,250	\$6,188	\$2,063	\$41,250
C.	Geographic Information Systems - SMTC	\$40,000	\$10,000	20%	\$50,000	\$12,500	\$9,375	\$3,125	\$62,500
D.	Geographic Information Systems - Member Agency Assistance	\$24,000	\$6,000	20%	\$30,000	\$7,500	\$5,625	\$1,875	\$37,500
	Total Short-Range Transportation Planning	\$94,382	\$23,618	20%	\$118,000	\$29,500	\$22,125	\$7,375	\$147,500
3.	Long Range Transportation Planning (44.23.02)								
A.	Bicycle/Pedestrian Planning	\$24,000	\$6,000	20%	\$30,000	\$7,500	\$5,625	\$1,875	\$37,500
B.	Bridge and Pavement Condition Management System (BPCMS)	\$20,000	\$0	0%	\$20,000	\$5,000	\$3,750	\$1,250	\$25,000
C.	I-81 NEPA Involvement	\$13,650	\$1,350	9%	\$15,000	\$3,750	\$2,813	\$938	\$18,750
D.	I-81 Travel Demand Modeling Project	\$9,000	\$1,000	10%	\$10,000	\$2,500	\$1,875	\$625	\$12,500
E.	MPO Area Regional Planning Initiatives	\$28,500	\$1,500	5%	\$30,000	\$7,500	\$5,625	\$1,875	\$37,500
F.	Long-Range Transportation Plan	\$45,000	\$0	0%	\$45,000	\$11,250	\$8,438	\$2,813	\$56,250
G.	Rail, Truck and Transit Planning	\$45,000	\$0	0%	\$45,000	\$11,250	\$8,438	\$2,813	\$56,250
H.	Traffic Safety	\$8,900	\$1,100	11%	\$10,000	\$2,500	\$1,875	\$625	\$12,500
I.	Travel Demand Modeling	\$50,000	\$0	0%	\$50,000	\$12,500	\$9,375	\$3,125	\$62,500
J.	ROW Data Collection and Inventory	\$10,000	\$0	0%	\$10,000	\$2,500	\$1,875	\$625	\$12,500
K.	Syracuse Metropolitan Area Regional Transit Study Ph. 1	\$84,500	\$45,500	35%	\$130,000	\$32,500	\$24,375	\$8,125	\$162,500
L.	Erie Boulevard East Pedestrian Study	\$30,000	\$0	0%	\$30,000	\$7,500	\$5,625	\$1,875	\$37,500
M.	Bicycle & Pedestrian Safety Outreach	\$12,000	\$3,000	20%	\$15,000	\$3,750	\$2,813	\$938	\$18,750
N.	Work Link	\$24,000	\$6,000	20%	\$30,000	\$7,500	\$5,625	\$1,875	\$37,500
O.	Camillus Bike/Ped Assessment	\$24,000	\$6,000	20%	\$30,000	\$7,500	\$5,625	\$1,875	\$37,500
P.	CCEO Inland Port Modeling and Analysis Technical Assistance	\$4,000	\$1,000	20%	\$5,000	\$1,250	\$938	\$313	\$6,250
Q.	Centro Rider / Non Rider Survey	\$28,000	\$7,000	20%	\$35,000	\$8,750	\$6,563	\$2,188	\$43,750
R.	Centro Employer Survey	\$8,000	\$2,000	20%	\$10,000	\$2,500	\$1,875	\$625	\$12,500
S.	Carrier Park Mobility Plan	\$28,000	\$7,000	20%	\$35,000	\$8,750	\$6,563	\$2,188	\$43,750
T.	Central DeWitt Bike / Ped Mobility Plan	\$24,000	\$6,000	20%	\$30,000	\$7,500	\$5,625	\$1,875	\$37,500
U.	Fayetteville Route 5 Buildout Analysis Assistance	\$28,000	\$7,000	20%	\$35,000	\$8,750	\$6,563	\$2,188	\$43,750
V.	City and OCDOT Traffic Count Program (recurring)	\$32,000	\$8,000	20%	\$40,000	\$10,000	\$7,500	\$2,500	\$50,000
W.	Local Comprehensive Plan Assistance	\$45,000	\$5,000	10%	\$50,000	\$12,500	\$9,375	\$3,125	\$62,500
X.	Skaneateles Multi-Use Corridor	\$16,000	\$4,000	20%	\$20,000	\$5,000	\$3,750	\$1,250	\$25,000
	Total Long-Range Transportation Planning	\$641,550	\$118,450	16%	\$760,000	\$190,000	\$142,500	\$47,500	\$949,999
4.	Transportation Improvement Program (TIP) (44.25.00)								
A.	TIP Development & Maintenance	\$45,565	\$5,063	10%	\$50,628	\$12,657	\$9,493	\$3,164	\$63,285
	Total Transportation Improvement Program	\$45,565	\$5,063	10%	\$50,628	\$12,657	\$9,493	\$3,164	\$63,285
5.	Other Activities (44.27.00)								
A.	Miscellaneous Activities and Special Technical Assistance	\$42,877	\$4,778	10%	\$47,655	\$11,914	\$8,935	\$2,978	\$59,569
	Total Other Activities	\$42,877	\$4,778	10%	\$47,655	\$11,914	\$8,935	\$2,978	\$59,569
	Grand Total FHWA PL & FTA MPP Funds	\$1,100,374	\$220,909	17%	\$1,321,283	\$330,321	\$247,741	\$82,580	\$1,651,604
	Grand Total - All Fund Sources				\$1,321,283				\$1,651,604

## TABLE 2

### 2017 - 2018 SUMMARY BUDGET

### FEDERAL PROGRAM ONLY

TASK BUDGET											
TASK		FUNDING SOURCE					RESPONSIBILITY				
ID	Task	FHWA - PL	FTA	State	Local	Total	Staff	CNY RPDB	State*	Local	Total
44.21.00	Program Administration and Support	\$276,000	\$69,000	\$64,688	\$21,563	\$431,250	\$265,000	\$80,000	\$64,688	\$21,563	\$431,250
44.24.00	Short-Range Transportation Planning	\$94,382	\$23,618	\$22,125	\$7,375	\$147,500	\$118,000	\$0	\$22,125	\$7,375	\$147,500
44.23.02	Long-Range Transportation Planning	\$641,550	\$118,450	\$142,500	\$47,500	\$950,000	\$760,000	\$0	\$142,500	\$47,500	\$950,000
44.25.00	Transportation Improvement Program	\$45,565	\$5,063	\$9,493	\$3,164	\$63,285	\$50,628	\$0	\$9,493	\$3,164	\$63,285
44.27.00	Other Activities	\$42,877	\$4,778	\$8,935	\$2,978	\$59,569	\$47,655	\$0	\$8,935	\$2,978	\$59,569
	<b>Total</b>	<b>\$1,100,374</b>	<b>\$220,909</b>	<b>\$247,741</b>	<b>\$82,580</b>	<b>\$1,651,604</b>	<b>\$1,241,283</b>	<b>\$80,000</b>	<b>\$247,741</b>	<b>\$82,580</b>	<b>\$1,651,604</b>
		<b>\$1,321,283</b>		<b>\$330,321</b>		<b>\$1,651,604</b>	<b>\$1,321,283</b>		<b>\$330,321</b>		<b>\$1,651,604</b>

AUDIT BUDGET						
ID	Category	Staff	CNY RPDB	State	Local	Total
44.20.01	Salaries	\$692,014		\$26,805		\$718,819
44.20.02	Fringe	\$222,169	\$0	\$8,655		\$230,824
44.20.03	Travel	\$11,000	\$0			\$11,000
44.20.04	Equipment	\$22,000	\$0			\$22,000
44.20.05	Supplies	\$7,500	\$0			\$7,500
44.20.06	Contractual	\$195,100	\$80,000		\$82,580	\$357,680
44.20.07	Other	\$14,200	\$0			\$14,200
44.20.08	Indirect	\$77,300	\$0	\$5,960		\$83,260
XX.XX.XX	Toll Credits*			\$206,320		\$206,320
	<b>Total</b>	<b>\$1,241,283</b>	<b>\$80,000</b>	<b>\$247,741</b>	<b>\$82,580</b>	<b>\$1,651,604</b>
		<b>\$1,321,283</b>		<b>\$330,321</b>		<b>\$1,651,604</b>
		<b>\$1,321,283</b>				<b>\$1,651,604</b>

\* The NYSDOT non-federal share is provided via Toll Credits for FHWA PL costs and as an In-Kind Service for FTA MPP costs.

**TABLE 3**  
**2017 - 2018 SUMMARY BUDGET**  
**FHWA - PL BUDGET**

TASK BUDGET							
ID	Task	Total	FHWA - PL	Staff	CNYRPDB	State*	Local
44.21.00	Program Administration and Support	\$345,000	\$276,000	\$212,000	\$64,000	\$51,750	\$17,250
44.24.00	Short-Range Transportation Planning	\$117,978	\$94,382	\$94,382		\$17,697	\$5,899
44.23.02	Long-Range Transportation Planning	\$801,938	\$641,550	\$641,550		\$120,291	\$40,097
44.25.00	Transportation Improvement Program	\$56,956	\$45,565	\$45,565		\$8,543	\$2,848
44.27.00	Other Activities	\$53,596	\$42,877	\$42,877		\$8,039	\$2,680
	<b>Total</b>	<b>\$1,375,468</b>	<b>\$1,100,374</b>	<b>\$1,036,374</b>	<b>\$64,000</b>	<b>\$206,320</b>	<b>\$68,773</b>

<b>\$1,375,468</b>	<b>\$1,100,374</b>		<b>\$206,320</b>	<b>\$68,773</b>
<b>\$1,375,468</b>				

AUDIT BUDGET						
ID	Category	Total	Staff	CNY RPDB	State	Local
44.20.01	Salaries	\$577,777	\$577,777			
44.20.02	Fringe	\$185,494	\$185,494			
44.20.03	Travel	\$9,184	\$9,184			
44.20.04	Equipment	\$18,368	\$18,368			
44.20.05	Supplies	\$6,262	\$6,262			
44.20.06	Contractual	\$295,667	\$162,893	\$64,000		\$68,773
44.20.07	Other	\$11,856	\$11,856			
44.20.08	Indirect	\$64,539	\$64,539			
XX.XX.XX	Toll Credits *	\$206,320			\$206,320	
	<b>Total</b>	<b>\$1,375,468</b>	<b>\$1,036,374</b>	<b>\$64,000</b>	<b>\$206,320</b>	<b>\$68,773</b>

<b>\$1,375,468</b>	<b>\$1,036,374</b>	<b>\$64,000</b>	<b>\$206,320</b>	<b>\$68,773</b>
<b>\$1,375,468</b>				

\* NYSDOT provides it's share of the non-federal match via Toll Credits



**TABLE 4**  
**2017 - 2018 SUMMARY BUDGET**  
**FTA BUDGET**

TASK BUDGET							
ID	Task	Total	FTA	Staff	CNY RPDB	State*	Local
44.21.00	Program Administration and Support	\$86,250	\$69,000	\$53,000	\$16,000	\$12,938	\$4,313
44.24.00	Short-Range Transportation Planning	\$29,523	\$23,618	\$23,618		\$4,428	\$1,476
44.23.02	Long-Range Transportation Planning	\$148,063	\$118,450	\$118,450		\$22,209	\$7,403
44.25.00	Transportation Improvement Program	\$6,329	\$5,063	\$5,063		\$949	\$316
44.27.00	Other Activities	\$5,973	\$4,778	\$4,778		\$896	\$299
	<b>Total</b>	<b>\$276,136</b>	<b>\$220,909</b>	<b>\$204,909</b>	<b>\$16,000</b>	<b>\$41,420</b>	<b>\$13,807</b>

<b>\$276,136</b>	<b>\$220,909</b>	<b>\$204,909</b>	<b>\$16,000</b>	<b>\$41,420</b>	<b>\$13,807</b>
<b>\$276,136</b>					

AUDIT BUDGET						
ID	Category	Total	Staff	CNY RPDB	State	Local
44.20.01	Salaries	\$141,041	\$114,237		\$26,804.61	
44.20.02	Fringe	\$45,331	\$36,675		\$8,655.37	
44.20.03	Travel	\$1,816	\$1,816			
44.20.04	Equipment	\$3,632	\$3,632			
44.20.05	Supplies	\$1,238	\$1,238			
44.20.06	Contractual	\$62,014	\$32,207	\$16,000		\$13,807
44.20.07	Other	\$2,344	\$2,344			
44.20.08	Indirect	\$18,721	\$12,761		\$5,960.46	
XX.XX.XX	Toll Credits	\$0				
	<b>Total</b>	<b>\$276,136</b>	<b>\$204,909</b>	<b>\$16,000</b>	<b>\$41,420</b>	<b>\$13,807</b>

<b>\$276,136</b>	<b>\$204,909</b>	<b>\$16,000</b>	<b>\$41,420</b>	<b>\$13,807</b>
<b>\$276,136</b>				

**TABLE 5**  
**2017 - 2018 SUMMARY BUDGET**  
**TOTAL AUDITABLE BUDGET**

<b>AUDIT BUDGET</b>						
<b>ID</b>	<b>Category</b>	<b>Total</b>	<b>Staff</b>	<b>CNY RPDB</b>	<b>State*</b>	<b>Local</b>
44.20.01	Salaries	\$718,819	\$692,014		\$26,805	
44.20.02	Fringe	\$230,824	\$222,169		\$8,655	
44.20.03	Travel	\$11,000	\$11,000		\$0	
44.20.04	Equipment	\$22,000	\$22,000		\$0	
44.20.05	Supplies	\$7,500	\$7,500		\$0	
44.20.06	Contractual	\$357,680	\$195,100	\$80,000	\$0	\$82,580
44.20.07	Other	\$14,200	\$14,200		\$0	
44.20.08	Indirect	\$83,260	\$77,300		\$5,960	
XX.XX.XX	Toll Credits	\$206,320	\$0		\$206,320	
	<b>Total</b>	<b>\$1,651,604</b>	<b>\$1,241,283</b>	<b>\$80,000</b>	<b>\$247,741</b>	<b>\$82,580</b>

<b>\$1,651,604</b>	<b>\$1,241,283</b>	<b>\$80,000</b>	<b>\$247,741</b>	<b>\$82,580</b>
<b>\$1,651,604</b>				

\* The NYSDOT non-federal share is provided via Toll Credits for FHWA PL costs and

as an In-Kind Service for FTA MPP costs.

**TABLE 6**  
**2017 - 2018 State Planning and Research Funding**

TASK BUDGET						
TASK		FUNDING SOURCE			RESPONSIBILITY	
ID	Task	NYSDOT - SPR	FHWA - SPR	Total	Staff	Total
44.21.00	Program Administration and Support	\$0	\$0	\$0	\$0	\$0
44.24.00	Short-Range Transportation Planning	\$0	\$0	\$0	\$0	\$0
44.23.02	Long-Range Transportation Planning	\$20,032	\$80,128	\$100,160	\$100,160	\$100,160
44.25.00	Transportation Improvement Program	\$0	\$0	\$0	\$0	\$0
44.27.00	Other Activities	\$0	\$0	\$0	\$0	\$0
	<b>Total</b>	<b>\$20,032</b>	<b>\$80,128</b>	<b>\$100,160</b>	<b>\$100,160</b>	<b>\$100,160</b>
		<b>\$100,160</b>		<b>\$100,160</b>	<b>\$100,160</b>	<b>\$100,160</b>

\* Note: SPR Budget is for a total multi-year SPR project not broken down by year

AUDIT BUDGET				
ID	Category	Staff	CNY RPDB	Total
44.20.01	Salaries	\$0	\$0	\$0
44.20.02	Fringe	\$0	\$0	\$0
44.20.03	Travel	\$0	\$0	\$0
44.20.04	Equipment	\$0	\$0	\$0
44.20.05	Supplies	\$0	\$0	\$0
44.20.06	Contractual	\$100,160	\$0	\$100,160
44.20.07	Other	\$0	\$0	\$0
44.20.08	Indirect	\$0	\$0	\$0
	<b>Total</b>	<b>\$100,160</b>	<b>\$0</b>	<b>\$100,160</b>
		<b>\$100,160</b>		<b>\$100,160</b>
		<b>\$100,160</b>		<b>\$100,160</b>

SPR Expenses for I-81 EIS/NEPA Modeling	\$100,160
SPR Expenses for SMART1 Study	\$0

# **UNIFIED PLANNING WORK PROGRAM**

**FY 2017-2018**

## **APPENDICES**

**Appendix A: Other Significant Federally Funded Transportation Planning Activities - SPR**

## **OTHER SIGNIFICANT FEDERALLY FUNDED TRANSPORTATION PLANNING ACTIVITIES**

In addition to the projects included in the SMTC's program, other federal investment in transportation exists in the region. A significant effort is being undertaken by the NYSDOT for the future of the I-81 corridor, particularly the elevated components in the city. This effort, The I-81 Viaduct Project, is being closely coordinated with the SMTC and is tied into the SMTC's I-81 Travel Demand Modeling Project (in progress).

Also included in this section are the listing of Metropolitan Area NYSDOT SPR investments related to transportation planning in New York State.

### SPR Funded Projects that Impact Metropolitan Areas

SPR #	Project Title	Begin/End Date	SPR Funding	Short Description
<b>SMTC</b>	<b>Region 3</b>			
C-07-70	I-81 Corridor Study & Project Scoping	Oct 2009 - Dec 2016	\$2,000,000	Investigate the need for transportation improvements to 10.69 miles of Interstate 81 between I-481/I-81 interchanges (Exits 16A & 29). A portion of these funds have been directed to SMTC for I-81 modeling and support work.
<b>GBNRTC</b>	<b>Region 5</b>			
C-14-56	Residential Parking Benefits District in Buffalo, NY	Dec 2014 - Feb 2016	\$90,565	The goal of this project is to explore best practices and provide recommendations for development of a model Residential Parking Benefits District, and/or other alternative strategies, which would achieve the following goals: (1) effectively manage the on-street parking supply and demand in the neighborhood, (2) reduce the number of single occupant vehicles driving to and from the area, (3) provide a set of customizable active parking management strategies, (4) improve the access, mobility and quality of life of local residents, and (5) identify sound financial management strategies for use of potential parking revenues.
C-14-57	Integrated Corridor Management for Niagara Frontier	Dec 2014 - Mar 2020	\$323,202	The objective of this Border Crossing Corridor Management Project is to optimize traffic operations by identifying effective traffic management strategies to mitigate congestion and environmental impacts.
C-14-58	Evaluating the Impacts of Complete Streets	Jan 2015 - Dec 2016	\$124,338	The goal of this project is to assess the viability of several measurement tools that are potentially applicable to quantitative evaluation of Complete Streets programs. The tools will touch upon several areas of impact, including: safety, economic and environmental impact, bike/pedestrian volume, and citizen feedback. The proposed study will deploy these measures in a field test conducted in Buffalo, NY, along four transportation corridors where Complete Streets projects have either been implemented or are planned.
<b>NYMTC</b>	<b>Regions 8, 10 and 11 as applicable</b>			
C-14-52	Continuous Count Traffic Count Program, Zone 3	May 2014 - Aug 2019	\$5,500,000	Conduct the continuous count traffic count program in Zone 3 (Metro New York City / Long Island) over a five year term with full performance-based maintenance and upgrade services to provide better coverage, distribution, and differentiation by functional classification of roadway, geographic area, and seasonality of traffic patterns.
<b>Projects Common to Multiple or All MPOs</b>				
C-08-63	Pavement Condition Data Collection Services	Jan 2011 - Dec 2017	\$10,730,000	The goal of this project is to collect pavement condition data as necessary to comply with New York State and federal requirements.
C-09-61	Transearch & Related Freight Data Procurement	May 2011 - Mar 2017	\$1,500,000	The goal of this project is to obtain Transearch and related freight data to address regular and ad hoc needs in support of ongoing planning activities and major investment studies.
C-10-54	National Household Travel Survey (NHTS), Census Transportation Planning Program (CTPP), Intercity Travel (ATS) and Travel Patterns for NYS	July 2012 - June 2017	\$6,500,000	The goal of this project is to provide research and analysis of national data sets to highlight New York State data.
C-11-51	Traffic Count Program Zone 1 [Regions 1,2,7,8,9]	June 2011 - Dec 2016	\$1,964,172	Continuous count programs with full performance based maintenance and upgrade services to provide better coverage, distribution, and differentiation by functional classification of roadway, geographic area, and seasonality of traffic patterns.

### SPR Funded Projects that Impact Metropolitan Areas

SPR #	Project Title	Begin/End Date	SPR Funding	Short Description
C-11-52	Traffic Count Program Zone 2 [Regions 3,4,5,6]	June 2011 - Dec 2016	\$1,780,776	Continuous count programs with full performance based maintenance and upgrade services to provide better coverage, distribution, and differentiation by functional classification of roadway, geographic area, and seasonality of traffic patterns.
C-12-52	VMT Base-line Traffic Count Project	Aug 2012 - Dec 2016	\$3,150,000	The goal of this project is to collect a sampling of geographically-distributed traffic count data on lower level (i.e., non-Federal Aid eligible) streets and roads to facilitate the development of accurate Vehicle Miles of Travel (VMT) estimates for these roads at reasonably low levels of stratification (such as by county and urban area).
C-13-54	Statewide Coordination of Metropolitan Planning Programs	Apr 2017 - Mar 2018	\$100,000	The goal of this project is to support and maintain the ongoing coordination of the metropolitan planning programs in NYS for statewide benefit; the ongoing collaboration of the fourteen (14) metropolitan planning organizations (MPOs); and the on-going coordination of metropolitan and statewide planning programs.
C-13-55	RIS Modifications in support of the Statewide GIS Network Project	June 2013 - Dec 2017	\$250,000	Update the Roadway Inventory System (RIS) Computer Application to be fully functional as required for its interaction and support of the completed Statewide Geographic Information System (GIS) Network. This project is an integral part of the NYSDOT effort to meet the FHWA mandate to submit an intelligent Statewide GIS Network for all public roads in New York State.
C-13-56	Statewide GIS Network Creation	June 2013 - Mar 2017	\$3,500,000	The goal of this project is to construct an intelligent GIS Roadway Network for all public roads in NYS. The project is a result of the August 7, 2012 FHWA directive mandating the submittal of a Statewide GIS Network file matching the annual HPMS report to FHWA.
C-13-57	Highway Oversize/Overweight Credentialing System (HOOCS)	Aug 2013 -Mar 2017	\$5,000,000	The goal is to implement a Commercial Off-the-Shelf (COTS) HOOCS software solution and obtain the accompanying integration services necessary to fulfill NYSDOT's Central Permitting Bureau's business requirements.
C-13-59	Program & Project Management Software and Training	Oct 2013 - Dec 2017	\$6,150,000	The goal of this project is to provide enhanced and improved enterprise level program and project management software and hardware to facilitate improvements to the capital program delivery. Partner with the consultant, Oracle, on development of Primavera Critical Path Method scheduling software, and Oracle Primavera Portfolio Manager Programming software.
C-14-51	New York State Freight Transportation Plan	Apr 2014 - Oct 2016	\$1,300,000	The goal of this project is to develop a New York State freight transportation plan that provides a comprehensive plan for the immediate and long-range planning activities and investments of the State with respect to freight.
C-14-53	Program & Project Management Software and Training	Aug 2014 - May 2017	\$1,850,000	The goal of this project is to provide support services for the ongoing configuration and implementation of a Department-wide enhanced and improved enterprise level program and project management system to facilitate improvements to the capital program delivery.
C-14-54	Global Inc. Trend Data, Analysis and Forecasts	Aug 2014 - Aug 2018	\$2,000,000	The goal of this project is to update the socio-demographic and business economic projections, VMT model and forecasts.



### SPR Funded Projects that Impact Metropolitan Areas

SPR #	Project Title	Begin/End Date	SPR Funding	Short Description
C-14-59	EVSE Implementation Plans for Upstate New York	Jan 2015 - Oct 2016	\$222,761	The goal of this project is to develop five regional EVSE Implementation plans that identify gaps where public EVSE is not available to support EV drivers and suggest further EVSE deployments in key locations to establish a comprehensive charging network.
C-14-61	Technical Support for Use of National Performance Management Research Data (NPMRDS)	Jan 2015 - Dec 2016	\$405,638	The goal of this project is to develop and make accessible to NYSDOT and partner planning agencies a hosted National Performance Management Research Data Set (NPMRDS) geo-database and analytic framework for performance analysis and visualization of congestion, mobility and reliability.
C-14-62	Roadway Inventory Data and Performance Measure Enhancements	Jan 2015 - Dec 2018	\$400,000	The goal of this project will progress and support improvement of existing data in the Roadway Inventory System (RIS), as well as modify and/or add new data items to support the Enterprise Linear Referencing System (ESRI Roads & Highways) implementation, Asset Management System (Agile Assets) implementation, upgrades to the traffic data system to replace the unsupported TRADAS, new data items in support of performance measurement requirements being developed as part of the FHWA implementation of MAP-21, and other evolving roadway inventory requirements and short term data modification efforts.
C-14-63	Short Count Traffic Count Program (2015-2019)	Aug 2015 - Sep 2020	\$7,650,308	The project goal is to provide for the collection of traffic data in NYSDOT Regions 1 through 11 (divided into Zones). This will be achieved by contracting for the collection of that data.
C-15-52	Statewide Planning, Policy & Technical Research Tasks in Support of ATDM (Active Transportation Demand Management)	Aug 2015 - June 2020	\$3,000,000	This project will progress and support specific task-order based assignments related to planning, policy, technical assistance, and research needs that may be inter-regional, or statewide in scope and aim to reduce congestion, energy consumption, greenhouse gas emissions, improve mobility, increase transportation efficiency through multimodal measures, and promote or foster a sustainable transportation system.
C-15-53	S4 (Safety Systems Strategic Support)	Sept 2015 - Aug 2018	\$900,000	The goal of this project is to secure IT resources and technical expertise to assist in the transition of the Department's Traffic Surveillance systems to new technologies and Enterprise platforms, specifically integrating the Department's safety management systems with the new Enterprise asset management application and the Roads and Highways Linear Referencing System.
C-15-54	Bus Safety Inspection System (BusNET)	Sept 2015 - Feb 2017	\$2,000,000	The goal of this project is to replace the existing 25+ year old mainframe with a new modern server-based IT system.
C-16-51	Continuous Count Traffic Count Program Zone 1	Dec 2016 - June 2021	\$2,525,000	This initiative is the Continuous Count (CC) Traffic Count Program for Zone 1 with full performance-based maintenance and upgrade services in Zone 1 to provide better coverage, distribution, and differentiation by functional classification of roadway, geographic area, and seasonality of traffic patterns.
C-16-52	Continuous Count Traffic Count Program Zone 2	Dec 2016 - June 2021	\$2,225,000	This initiative is the Continuous Count (CC) Traffic Count Program for Zone 2 with full performance based maintenance and upgrade services in Zone 2 to provide better coverage, distribution, and differentiation by functional classification of roadway, geographic area, and seasonality of traffic patterns.



## **SMTC SPR FUNDING**

Funding for the SMTC's efforts towards the I-81 Travel Demand Modeling Project and the Syracuse Metropolitan Area Regional Transit Study Phase 1 are being supplemented with federal SPR funds by the NYSDOT. The SPR monies being supplemented by the NYSDOT are anticipated to be spent on contractual items for the most part but may offset some staff costs if required in the future. Project descriptions for each of the above noted projects are contained in Section 3. Long Range Transportation Planning.