

UPWP

UNIFIED PLANNING WORK PROGRAM 2008 - 2010

2009 - 2010 AMENDMENT



SYRACUSE METROPOLITAN TRANSPORTATION COUNCIL

**Syracuse Metropolitan Transportation Council
Unified Planning Work Program
2009-2010 UPWP Amendment
to the 2008-2010 UPWP**

2009-2010 Amendment to the
2008 - 2010 UNIFIED PLANNING WORK PROGRAM
FOR TRANSPORTATION PLANNING
in the
SYRACUSE
METROPOLITAN PLANNING AREA

**Adopted by the Policy Committee of the
Syracuse Metropolitan Transportation Council**

February 25, 2009

This document has been ADOPTED by the Syracuse Metropolitan Transportation Council (SMTC). The SMTC Member Agencies agree to the contents and will adhere to said document as necessary and to the best of their ability.

This document was prepared with financial assistance from the Federal Highway Administration and the Federal Transit Administration of the U.S. Department of Transportation through the New York State Department of Transportation.

**SYRACUSE METROPOLITAN TRANSPORTATION COUNCIL
2009-2010 UNIFIED PLANNING WORK PROGRAM AMENDMENT**

TABLE OF CONTENTS

<u>Section</u>	<u>Page</u>
RESOLUTION	4
2008-2010 UNIFIED PLANNING WORK PROGRAM - PURPOSE	6
DEVELOPMENT OF THE UNIFIED PLANNING WORK PROGRAM	6
COUNCIL ORGANIZATION	7
SMTC COMMITTEE STRUCTURE	9
SMTC STAFFING	10
OPERATIONAL PROCEDURES AND BYLAWS	10
UNIFIED PLANNING WORK PROGRAM FRAMEWORK	11
SUMMARY OF MAJOR PROGRAMMED ACTIVITIES	12
NYS MPO SHARED COST INITIATIVES	13
2009-2010 UNIFIED PLANNING WORK PROGRAM OUTLINE	16
RESCISSION OF PLANNING FUNDS	17
1. PROGRAM ADMINISTRATION AND SUPPORT	18
2. SHORT-RANGE TRANSPORTATION PLANNING	25
3. LONG-RANGE TRANSPORTATION PLANNING	31
4. TRANSPORTATION IMPROVEMENT PROGRAM	66
5. OTHER ACTIVITIES	68
6. BUDGET TABLES	70
 <u>2009-2010</u>	
TABLE 1 - SUMMARY BUDGET	71
TABLE 2 - SUMMARY BUDGET - FEDERAL PROGRAMS ONLY	72
TABLE 3 - FHWA BUDGETS	73
TABLE 4 - FTA BUDGETS	74
TABLE 5 - TOTAL FEDERAL BUDGETS	75
TABLE 6 - TOTAL AUDITABLE BUDGET	76
 APPENDICES	77
 APPENDIX A	78

RESOLUTION

**SYRACUSE METROPOLITAN TRANSPORTATION COUNCIL
POLICY COMMITTEE**

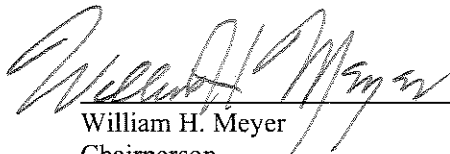
February 25, 2009

- WHEREAS,** In order to promote a coordinated, continuous and comprehensive transportation planning process in the Syracuse Metropolitan Area, it has been found necessary to develop an annual Unified Planning Work Program (UPWP); and
- WHEREAS,** the Safe, Accountable, Flexible, Efficient Transportation Equity Act: A Legacy for Users (SAFETEA-LU) expanded the role of Metropolitan Planning Organizations (MPOs) and requirements for intermodal transportation planning and has committed the funds for such planning activities; and
- WHEREAS,** the SMTC Planning Committee has worked with the assistance of the Central Staff to develop a recommended UPWP so that the latest draft submitted herewith represents an accurate description of work to be undertaken and funds to be made available; and
- WHEREAS,** in recognition of the need to promote energy conservation and overall efficiency of the existing transportation system, the UPWP pursues work on several projects including (1) the Long-Range Transportation Plan, (2) the Transportation Improvement Program, and (3) the Congestion Management Process; and
- WHEREAS,** in cooperation with the New York State Department of Transportation (NYSDOT) and Environmental Conservation (NYSDEC), and in accordance with the New York State Implementation Plan for Air Quality, the Policy Committee continues to accept its responsibility for air quality planning during 2009-2010 for the Syracuse area; and
- WHEREAS,** the Policy Committee is committed to assuring equal opportunity to all persons in the planning of transportation services and facilities; and
- WHEREAS,** in order to support these and other elements of the 2009-2010 UPWP Amendment, the Policy Committee continues its designation of the NYSDOT to be the grant applicant on behalf of the SMTC. The NYSDOT will apply for necessary regular program funding under the Federal Transit Administration (FTA) Section 5303 program, under the Federal Highway Administration (FHWA) "PL" transportation planning program and "SPR" program, and under the Federal Aviation Administration (FAA) aviation planning in amounts consistent with this approved UPWP. It is also understood that unspent funds approved during previous years under the FTA Section 5303 and FAA planning programs will be made available for expenditure during 2009-2010.

NOW THEREFORE BE IT RESOLVED, that the Policy Committee adopts the 2009-2010 Unified Planning Work Program Amendment and the submission thereof to the appropriate Federal and State agencies and directs the filing of appropriate applications to support the program; and

BE IT FURTHER RESOLVED, that the Policy Committee authorizes the Planning Committee to make revisions and refinements in funding or responsibility to the UPWP as found necessary both to finalize and implement the UPWP consistent with its overall scale and program emphasis.

Done and ordered this 25th day of February 2009 by consensus of the SMTC Policy Committee.



William H. Meyer
Chairperson
SMTC Policy Committee



New York State Department of Transportation
Secretary
SMTC Policy Committee

Date: February 25, 2009

Date: February 25, 2009

SYRACUSE METROPOLITAN TRANSPORTATION COUNCIL

2008-2010 UNIFIED PLANNING WORK PROGRAM (UPWP) - PURPOSE

The Unified Planning Work Program (UPWP) incorporates in one document all transportation planning and directly supporting comprehensive planning activities in the Syracuse Metropolitan Area during State fiscal years 2008-2010. It is intended to provide a mechanism for the coordination of planning efforts by local, State, and regional agencies through the Syracuse Metropolitan Transportation Council (SMTC).

The U.S. Department of Transportation (USDOT) and its modal administrations [i.e., the Federal Aviation Administration (FAA), the Federal Highway Administration (FHWA), the Federal Railroad Administration (FRA), and the Federal Transit Administration (FTA)] require this Unified Planning Work Program as a basis and condition for all funding assistance for transportation planning to State, local and regional agencies. The authority for this requirement is found in three separate Federal legislative acts establishing transportation planning programs:

1. Title 23, U.S. Code Section 134 (Federal Aid Highway Act of 1962, as amended)
2. Title 49, U.S. Code Section 1603 et. al.: (Urban Mass Transportation Act of 1964, as amended)
3. Title 49, U.S. Code Section 1701 (Airport and Airways Development Act of 1970, as amended).

DEVELOPMENT OF THE UNIFIED PLANNING WORK PROGRAM

As the Metropolitan Planning Organization (MPO) designated by the Governor of the State of New York, the SMTC has the responsibility to carry out the continuous, comprehensive and cooperative transportation planning process for the Syracuse Metropolitan Area. The Unified Planning Work Program (UPWP) identifies the transportation planning activities which are to be undertaken in the SMTC study area in support of the goals, objectives and actions established in the Long Range Transportation Plan (LRTP), which was originally adopted in January 1995 and updated in 1998, 2001, 2004 and 2007. The SMTC Central Staff, working with the Planning Committee and the New York State Department of Transportation, biennially initiates the process of developing the UPWP and prepares a final draft for both Planning and Policy Committees consideration. The intent in developing a comprehensive Work Program is to ensure that a coordinated transportation planning process occurs in the region, which will make positive contributions toward achievement of the established Long Range Transportation Plan goals regarding mobility, facilities, safety, security, the environment, economy and land use.

The SMTC's Operations Plan outlines a framework for the Work Program that the Central Staff is expected to accomplish, and provides guidance with respect to a financial plan to support the Work Program. This 2008-2010 Work Program is intended to be consistent with the Operations Plan, as well as the metropolitan planning requirements of the Federal Safe, Accountable, Flexible, Efficient Transportation Equity Act: A Legacy for Users (SAFETEA-LU) and its implementing regulations. Compliance with these regulations frames much of this program. Further, the Work Program strives to address New York State Department of Transportation planning emphasis areas which are intended to implement the State's policies for urban area transportation planning. This is to ensure that projects conceived by the SMTC fulfill Federal and State policies, and local issues progress in a timely manner.

The status of the current Work Program is reviewed monthly by the SMTC's Executive Committee to ensure that it is being carried out in a manner consistent with the MPO's goals. While it is the mission of the Central Staff and the Executive Committee to complete work efforts within a program year, task elements may be

designed to span multiple fiscal years and therefore are carried into subsequent Work Programs to effect closure. Each year an estimate of transportation planning funds available for new programs is made. Policy direction and scope of the UPWP are developed with member agency participation based on their needs, consistent with the LRTP.

The staff, working with member agencies, establishes a list of candidate projects for inclusion in the next year's work program. Estimates of amounts and sources of funding needed to accomplish the planning program are developed. The Planning Committee then prioritizes the continuing program and the new projects. A draft UPWP is developed for Planning Committee review and recommendation of adoption to the Policy Committee. The Policy Committee has the final responsibility to adopt the UPWP.

COUNCIL ORGANIZATION

The Syracuse Metropolitan Transportation Council (SMTC) is organized to facilitate and encourage maximum interaction between local, State and Federal agencies involved in the transportation decision-making process. To accomplish this, a committee structure was adopted to include the following Committees:

Policy Committee

The Policy Committee consists of the elected and appointed officials representing local, State and Federal governments and other organizations/agencies having an interest or responsibility in comprehensive transportation planning in the Syracuse Metropolitan Area. The primary responsibility of the Policy Committee is to establish policies for the overall conduct of the SMTC.

Planning Committee

The Planning Committee, which is established by the Policy Committee, is composed of the professional/technical representatives of both the Policy Committee members and public agencies having direct or indirect responsibility for transportation planning and/or implementation. Their primary responsibility is to monitor all technical activities including the annual development of a draft UPWP and TIP for recommendation to the Policy Committee. They also direct and consider for recommendation to the Policy Committee all major studies and planning activities.

Executive Committee

The Executive Committee is made up of Planning Committee members and provides oversight of the day-to-day operation of the Central Staff for financial management, personnel and other administrative requirements.

Additional Committees

An important element in the operation of the Planning Committee is the effective utilization of both formal and ad-hoc advisory committees to review and evaluate detailed Council issues and results of planning activities. The committees function principally to make recommendations to the Planning Committee on subjects directed to them by the Planning Committee which require extensive evaluation and which would be inefficient to resolve by the full committee itself.

The SMTC typically develops a project specific Study Advisory Committee (SAC) for each of its planning activities.

The SMTC also has a permanent Capital Projects Committee. The Capital Projects Committee is responsible for making recommendations to the full Planning Committee regarding project priorities to be funded by various Federal Aid Highway Programs and included in the Transportation Improvement Program (TIP).

Non-Voting Membership

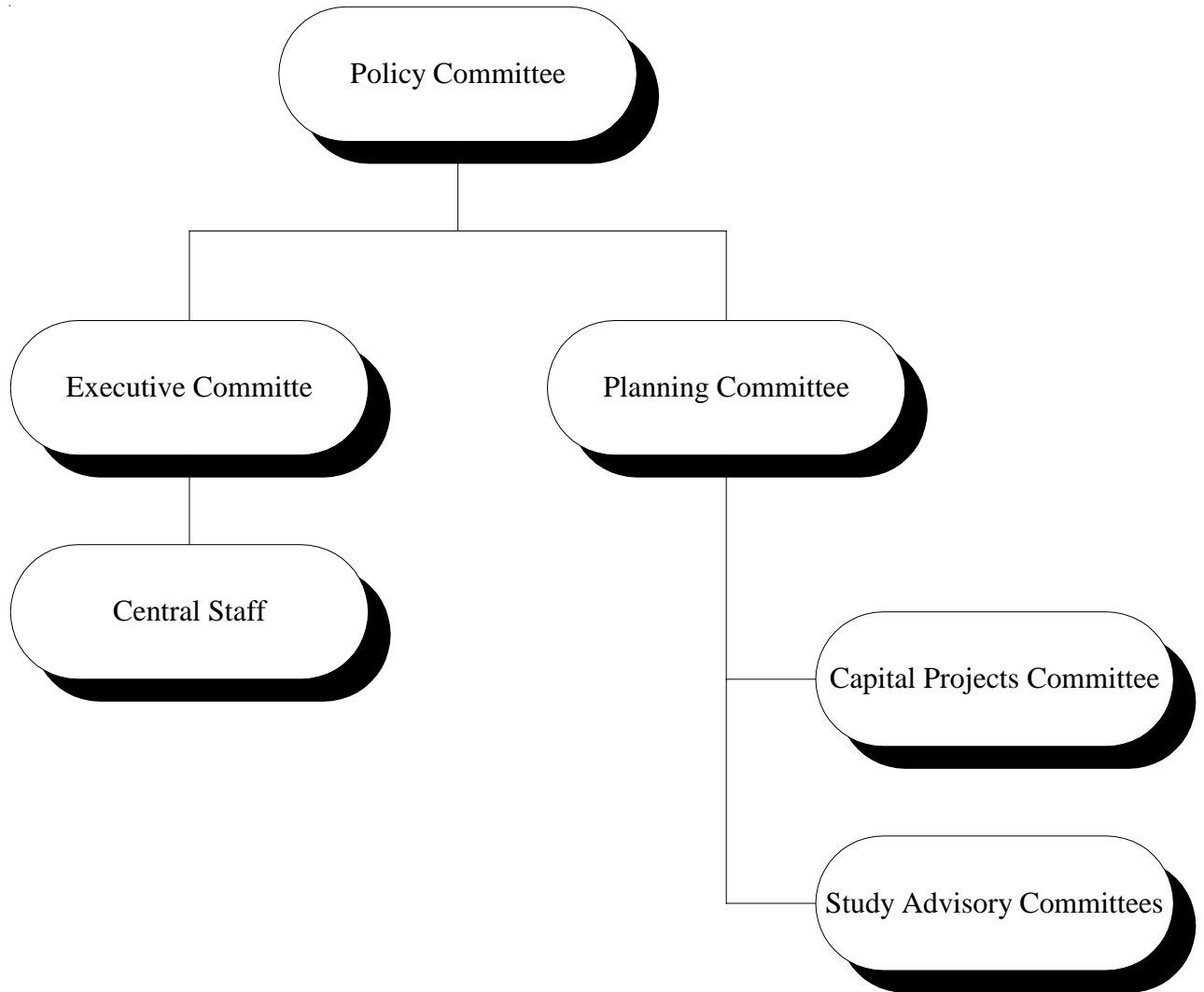
The Council maintains a non-voting membership category to accommodate agencies that have programs indirectly related to transportation and/or transportation planning. With the exception of voting on official Council business, these members are eligible to participate in Committee discussions and to receive all Committee correspondence.

Organizational Objectives

In order to achieve the SMTC program goals and the detailed technical activities inherent in them, the Council organization has the following objectives:

1. Develop an administrative committee structure which will express and coordinate transportation planning and development values, policies, and goals as related to transportation requirements at all governmental levels;
2. Provide guidance to public and private decision-makers involved in immediate implementation and long-range activities;
3. Provide technical study programs and fulfill organizational responsibilities necessary to continue transportation plan development, study refinement, and research;
4. Provide for community review of the Long Range Transportation Plan and its sub-elements, resolve conflicts with community values, and obtain participation in updating and reevaluating the plan;
5. Monitor and evaluate changes in the metropolitan structure and identify growth problems, and update the plan as necessary; and
6. Promote the coordination of planning activities to implement the “continuing, comprehensive planning” concept.

SMTC COMMITTEE STRUCTURE



SMTC STAFFING

The work proposed under this Unified Planning Work Program (UPWP) will be accomplished primarily by the SMTC Central Staff, with the assistance and cooperative support of the participating SMTC member agencies (e.g., Central New York Regional Planning and Development Board (CNY RPDB), Central New York Regional Transportation Authority (CNYRTA), City of Syracuse, New York State Department of Transportation, Onondaga County, Syracuse-Onondaga County Planning Agency (SOCPA), etc.) as well as the use of private consultants, where appropriate.

SMTC Central Staff

A permanent, intermodal professional staff has been assembled to carry out the major portion of the SMTC continuing transportation planning program. This staff, consisting of a Director, professional, technical and support personnel, will pursue specific SMTC work program task elements under the direction of the Executive Committee.

Onondaga County acts as the Host agency for the Central Staff operation and contracts with the Central New York Regional Planning and Development Board (CNY RPDB) to administer the program. As part of the host's responsibility, an annual audit of the SMTC financial records is completed, as required by Federal regulations. The CNY RPDB also contributes technical support to the SMTC as needed.

New York State Department of Transportation Staff

The New York State Department of Transportation (NYSDOT) has an extensive professional staff of transportation planners, analysts and both professional and support personnel, in such associated specialties as transportation planning, economics, research, data processing and environmental impact analysis. The NYSDOT provides assistance to the SMTC on various issues as requested.

Syracuse - Onondaga County Planning Agency Staff

The Syracuse - Onondaga County Planning Agency (SOCPA) provides the SMTC with planning assistance and various GIS-related information.

Central New York Regional Transportation Authority Staff

The Central New York Regional Transportation Authority (CNYRTA) provides the SMTC with both general and project specific data relating to transit. Such data includes ridership information, counts, scheduling, routing, etc.

OPERATIONAL PROCEDURES AND BYLAWS

The SMTC operates under an adopted set of bylaws. Administrative and operational procedures are included in the SMTC Operations Plan and in the operational policies of the Central New York Regional Planning and Development Board.

Official records of SMTC business are maintained in the SMTC Administrative Offices located at 100 Clinton Square, 126 North Salina Street, Suite 100, Syracuse NY 13202. All of the SMTC records are available for public inspection during normal business hours.

UNIFIED PLANNING WORK PROGRAM (UPWP) FRAMEWORK

The biennial UPWP establishes the transportation planning activities and programs of the Metropolitan Planning Organization (MPO) to be carried out over the course of the work program years (April through March). Other than administration, the basis of the work program is focused in three broad areas:

- I. Maintenance of a Transportation Improvement Program (TIP), which identifies projects and/or programs to receive various sources of Federal funds covering highway, transit, and intermodal facilities and programs.
- II. Maintenance and implementation of the Long Range Transportation Plan (LRTP), which identifies priority transportation system deficiencies and feasible/appropriate methods for addressing those deficiencies in a fiscally constrained environment.

Five transportation goals were identified for the Syracuse Metropolitan Area in the SMTC 2020 Long Range Transportation Plan adopted in January 1995, updated in 1998, 2001, 2004, and 2007, including: mobility, safety, environment, economy and facilities. Detailed objectives and action recommendations were also identified in regard to each of the goal areas.

- III. Recognition of requirements established by the Federal Highway Administration (FHWA) regarding the national transportation planning priorities included in the SAFETEA-LU and National Highway System legislation. The eight planning factor requirements of SAFETEA-LU are listed below:
 1. Support the economic vitality of the metropolitan area, especially by enabling global competitiveness, productivity and efficiency;
 2. Increase the safety of the transportation system for motorized and non-motorized users;
 3. Increase the security of the transportation system for motorized and non-motorized users;
 4. Increase the accessibility and mobility of people and for freight;
 5. Protect and enhance the environment, promote energy conservation, improve quality of life and promote consistency between transportation improvements and State and local planned growth and economic development patterns;
 6. Enhance the integration and connectivity of the transportation system, across and between modes, for people and freight;
 7. Promote efficient system management and operation; and
 8. Emphasize the preservation of the existing transportation system.

SUMMARY OF MAJOR PROGRAMMED ACTIVITIES

The 2008-2010 SMTTC Unified Planning Work Program (UPWP) is based on the SMTTC's 2020 Long Range Transportation Plan, which was updated and approved by the Policy Committee. Emphasis has been placed on developing a program which can be reasonably accomplished with available staff and consultant resources and which is in keeping with the priorities of the SMTTC area. This 2008-2010 UPWP emphasizes activities that promote the implementation of the existing Plan.

The Safe, Accountable, Flexible, Efficient Transportation Equity Act: A Legacy for Users (SAFETEA-LU) and other Federal legislation (1990 Clean Air Act Amendments and Americans With Disabilities Act of 1990) significantly impacts the manner in which the cooperative, continuous and comprehensive transportation planning process is administered. Among the opportunities are funding flexibility, intermodal planning, protection of the environment and the maintenance and preservation of existing transportation infrastructure.

Tasks within this Work Program are organized into several major categories to facilitate review and management as follows:

1 — Program Administration and Support

This category includes general administration, UPWP maintenance and development and public participation. In addition, funding has also been included for the staff to become educated on the new SAFETEA-LU legislation and requirements.

2 — Short Range Transportation Planning

This category includes projects which could be implemented in a shorter time frame and includes activities related to the Census data, transit and vehicle data collection and Geographic Information Systems (GIS) activities.

3 — Long Range Transportation Planning

The majority of UPWP projects that fall under this category are either annual activities or projects that tend to take longer to complete.

4 — Transportation Improvement Program (TIP)

This category includes various tasks associated with the administration and maintenance of the TIP, which identifies projects and programs to receive various sources of Federal funds covering highway, transit, and intermodal facilities and programs.

5 — Other Activities

This category includes miscellaneous activities and special technical assistance not otherwise covered.

6 — Budget Tables

New York State Metropolitan Planning Organizations

Shared Cost Initiatives

In addition to the projects included in the SMTC's program, staff will be participating with other New York State Metropolitan Planning Organizations on several Shared Cost Initiative (SCI) projects. The SMTC's federal allocation accounted for in the budget tables does not include the set-aside for these SCI projects, as the allocation was previously adjusted proportionally by the New York State Department of Transportation (NYSDOT). In addition, the SMTC FHWA allocation has also been adjusted to account for the annual Association of Metropolitan Planning Organization's dues. The SCI projects are detailed in the tables that follow for 2009-2010. The SMTC fully supports these Shared Cost Initiatives.

SHARED COST INITIATIVE STATUS - 2008/09

Expenditures and obligations of federal funds only

1/23/2009

		FHWA PL SCI SET-ASIDES																PROJECT SPONSOR
TASK	PROGRAM YEAR-->	1999/00	2000/01	2001/02	2002/03	2003/04	2004 - 07	2007/08		2008/09		TOTAL FUNDING		FUNDS EXPENDED		AVAILABLE BALANCE		
								PL	SPR	PL	SPR	PL	SPR	PL	SPR	PL	SPR	
NYS MPO Association Staff		\$213,721	\$245,000	\$206,279	\$0	\$120,000	\$0	\$210,000	\$0	\$230,000		\$1,225,000	\$0	\$1,033,480		\$191,520	\$0	CDTC
Attitudinal & Preference Survey		\$105,000	\$0	\$0	\$0	\$0	\$0	\$0	\$0	\$0		\$105,000	\$0	\$105,000		\$0	\$0	GBNRTC
Long Term Funding Needs		\$0	\$0	\$0	\$0	\$0	\$0	\$0	\$0	\$0		\$0	\$0	\$0		\$0	\$0	GTC
Transportation & Community Design - Phase I		\$0	\$0	\$125,000	\$0	\$0	\$0	\$0	\$0	\$0		\$125,000	\$0	\$121,090		\$3,910	\$0	CDTC
Phase II		\$0	\$100,000	\$0	\$0	\$0	\$0	\$0	\$0	\$0		\$100,000	\$0	\$17,218		\$82,782	\$0	
Statewide Data Collection (high tech) - Phase I		\$0	\$0	\$51,542	\$0	\$0	\$0	\$0	\$0	\$0		\$51,542	\$0	\$51,542		\$0	\$0	BMTS
Technical Services \ Speed Data Contract		\$0	\$0	\$0	\$0	\$0	\$0	\$0	\$0	\$0	\$0	\$0	\$0	\$0		\$0	\$0	AIGFTC
Travel Behavior Factors		\$0	\$0	\$100,000	\$0	\$0	\$0	\$0	\$0	\$0		\$100,000	\$0	\$94,197		\$5,803	\$0	CDTC
Transit Supportive Development		\$0	\$0	\$165,000	\$0	\$0	\$0	\$25,000	\$0	\$0		\$190,000	\$0	\$117,531		\$72,469	\$0	PDCTC
CMS Research		\$0	\$80,000	\$0	\$0	\$0	\$0	\$0	\$0	\$0		\$80,000	\$0	\$79,655		\$345	\$0	SMTC
Staff Training (See Table on Page 2)		\$0	\$50,000	\$52,179	\$0	\$0	\$0	\$0	\$42,500	\$0	\$0	\$102,179	\$42,500	\$102,179	\$12,240	\$0	\$30,260	xxxxx
Innovative Approaches to Plan Implementation		\$0	\$75,000	\$0	\$0	\$0	\$0	\$0	\$0	\$0		\$75,000	\$0	\$74,203		\$797	\$0	GBNRTC
Dev. Of Post Procs. For Travel Demand Modeling		\$0	\$0	\$0	\$0	\$0	\$0	\$0	\$0	\$0		\$0	\$0	\$0		\$0	\$0	CDTC
RTP Financial Planning		\$0	\$0	\$0	\$0	\$0	\$0	\$2,500	\$42,500	\$0	\$0	\$2,500	\$42,500	\$0		\$2,500	\$42,500	ITCTC
Public Transit-Human Services Transp. Plan		\$0	\$0	\$0	\$0	\$0	\$0	\$0	\$0	\$0		\$0	\$0	\$0		\$0	\$0	OCTC
NYS Metropolitan Planning Self Assessment		\$0	\$0	\$0	\$0	\$0	\$0	\$50,000	\$50,000	\$0	\$0	\$50,000	\$50,000	\$0		\$50,000	\$50,000	BMTS
Project Data System		\$0	\$0	\$0	\$0	\$0	\$0	\$0	\$0	\$0		\$0	\$0	\$0		\$0	\$0	NYMTC
Mitigation Cost Sharing		\$0	\$0	\$0	\$0	\$0	\$0	\$0	\$0	\$0		\$0	\$0	\$0		\$0	\$0	CDTC
Software Standardization for Visualization\Publishing		\$0	\$0	\$50,000	\$0	\$0	\$0	\$0	\$0	\$0		\$0	\$0	\$0		\$0	\$0	AIGFTC
Future Transp. Revenues: Beyond State\Federal		\$0	\$0	\$0	\$0	\$0	\$0	\$0	\$0	\$0		\$0	\$0	\$0		\$0	\$0	GBNRTC
OBLIGATED		\$318,721	\$550,000	\$750,000	\$0	\$120,000	\$0	\$287,500	\$135,000	\$230,000	\$0	\$2,206,221	\$135,000	\$1,796,095	\$12,240	\$410,126	\$122,760	
UNOBLIGATED		\$0	\$0	\$0	\$0	\$0	\$0	\$12,500	\$0	\$70,000	\$0	\$132,500	\$0	XXXXXX	XXXXXX	\$132,500	\$0	
TOTAL		\$318,721	\$550,000	\$750,000	\$0	\$120,000	\$0	\$300,000	\$135,000	\$300,000	\$0	\$2,338,721	\$135,000	\$1,796,095	\$12,240	\$542,626	\$122,760	

14

		FTA MPP SCI SET-ASIDES																PROJECT SPONSOR
TASK	PROGRAM YEAR-->	1999/00	2000/01	2001/02	2002/03	2003/04	2004 - 2007	2007/08		2008/09		TOTAL FUNDING		FUNDS EXPENDED		AVAILABLE BALANCE		
								MPP	SPR	MPP	SPR	MPP	SPR	MPP	SPR	MPP	SPR	
NYS MPO Association Staff		\$0	\$0	\$0	\$0	\$0	\$0	\$0				\$0	\$0	\$0		\$0	\$0	CDTC
Attitudinal & Preference Survey		\$0	\$0	\$0	\$0	\$0	\$0	\$0				\$0	\$0	\$0		\$0	\$0	GBNRTC
Long Term Funding Needs		\$0	\$49,997	\$100,000	\$0	\$0	\$0	\$0				\$149,997	\$0	\$149,997		\$0	\$0	GTC
Transportation & Community Design - Phase I		\$0	\$0	\$0	\$0	\$0	\$0	\$0				\$0	\$0	\$0		\$0	\$0	CDTC
Phase II		\$0	\$0	\$0	\$0	\$0	\$0	\$0				\$0	\$0	\$0		\$0	\$0	
Statewide Data Collection (high tech) - Phase I		\$0	\$50,000	\$36,985	\$0	\$0	\$0	\$0				\$86,985	\$0	\$86,985		\$0	\$0	GTC
Technical Services \Speed Data Contract		\$0	\$0	\$0	\$0	\$0	\$0	\$0		\$50,000		\$0	\$0	\$0		\$0	\$0	AIGFTC
Travel Behavior Factors		\$0	\$0	\$0	\$0	\$0	\$0	\$0				\$0	\$0	\$0		\$0	\$0	CDTC
Transit Supportive Development		\$0	\$0	\$0	\$0	\$0	\$0	\$0				\$0	\$0	\$0		\$0	\$0	PDCTC
CMS Research		\$0	\$0	\$0	\$0	\$0	\$0	\$0				\$0	\$0	\$0		\$0	\$0	SMTC
Staff Training (See Table on Page 2)		\$0	\$100,000	\$101,473	\$0	\$17,930	\$0	\$121,241	\$0	\$10,563		\$351,207	\$0	\$224,726	\$0	\$126,481	\$0	xxxxxx
Innovative Approaches to Plan Implementation		\$0	\$0	\$0	\$0	\$0	\$0	\$0				\$0	\$0	\$0		\$0	\$0	GBNRTC
Dev. Of Post Procs. For Travel Demand Modeling		\$0	\$0	\$0	\$0	\$0	\$0	\$0				\$0	\$0	\$0		\$0	\$0	CDTC
RTP Financial Planning		\$0	\$0	\$0	\$0	\$0	\$0	\$40,000				\$40,000	\$0	\$0		\$40,000	\$0	ITCTC
NYS Metropolitan Planning Self Assessment		\$0	\$0	\$0	\$0	\$0	\$0	\$0				\$0	\$0	\$0		\$0	\$0	BMTS
Project Data System		\$0	\$0	\$0	\$0	\$0	\$0	\$0	\$0	\$0	\$0	\$0	\$0	\$0		\$0	\$0	NYMTC
Mitigation Cost Sharing		\$0	\$0	\$0	\$0	\$0	\$0	\$0	\$0	\$0	\$0	\$0	\$0	\$0		\$0	\$0	CDTC
Software Standardization for Visualization\Publishing		\$0	\$0	\$0	\$0	\$0	\$0	\$0	\$0	\$0	\$0	\$0	\$0	\$0		\$0	\$0	AIGFTC
Future Transp. Revenues: Beyond State\Federal		\$0	\$0	\$0	\$0	\$0	\$0	\$0	\$0	\$50,000	\$0	\$50,000	\$0	\$0		\$50,000	\$0	GBNRTC
OBLIGATED		\$0	\$199,997	\$238,458	\$0	\$17,930	\$0	\$161,241	\$0	\$110,563	\$0	\$678,189	\$0	\$461,708	\$0	\$216,481	\$0	
UNOBLIGATED		\$0	\$3	\$0	\$0	\$0	\$0	\$17,500	\$0			\$71,253	\$0	XXXXXX	XXXXXX	\$71,253	\$0	
TOTAL		\$0	\$200,000	\$238,458	\$0	\$17,930	\$0	\$178,741	\$0	\$114,313		\$749,442	\$0	\$461,708	\$0	\$287,734	\$0	

SCI TRAINING TASK TABLE

	TRAINING TASK SUMMARY FHWA PL SCI SET-ASIDES															
PROGRAM YEAR----->	1999/00	2000/01	2001/02	2002/03	2003/04	2004 - 07	2007/08		2008/09		TOTAL FUNDING		FUNDS EXPENDED		AVAILABLE BALANCE	
							PL	SPR	PL	SPR	PL	SPR	PL	SPR	PL	SPR
General	\$0	\$0	\$0	\$0	\$0	\$0	\$0	\$38,215	\$0	\$0	\$0	\$38,215	\$0	\$7,955	\$0	\$30,260
Freight Data	\$0	\$0	\$1,009	\$0	\$0	\$0	\$0	\$0	\$0	\$0	\$1,009	\$0	\$1,009	\$0	\$0	\$0
ArcGIS Training - ERSI - 05/22/07	\$0	\$7,434	\$0	\$0	\$0	\$0	\$0	\$0	\$0	\$0	\$7,434	\$0	\$7,434	\$0	\$0	\$0
ArcGIS Training - ERSI - 07/24/07	\$0	\$5,147	\$0	\$0	\$0	\$0	\$0	\$0	\$0	\$0	\$5,147	\$0	\$5,147	\$0	\$0	\$0
Strategic Dec. Making Initiative	\$0	\$0	\$50,000	\$0	\$0	\$0	\$0	\$0	\$0	\$0	\$50,000	\$0	\$50,000	\$0	\$0	\$0
Turbo Architecture	\$0	\$0	\$0	\$0	\$0	\$0	\$0	\$0	\$0	\$0	\$0	\$0	\$0	\$0	\$0	\$0
Est. Reg Mobile Source Emissions	\$0	\$0	\$0	\$0	\$0	\$0	\$0	\$0	\$0	\$0	\$0	\$0	\$0	\$0	\$0	\$0
Safe Routes to School 11/2005	\$0	\$0	\$0	\$0	\$0	\$0	\$0	\$0	\$0	\$0	\$0	\$0	\$0	\$0	\$0	\$0
Travel Demand Forecasting 03/2006	\$0	\$0	\$0	\$0	\$0	\$0	\$0	\$0	\$0	\$0	\$0	\$0	\$0	\$0	\$0	\$0
Accessible Pedestrian Signals	\$0	\$0	\$0	\$0	\$0	\$0	\$0	\$0	\$0	\$0	\$0	\$0	\$0	\$0	\$0	\$0
MPO Conference Training	\$0	\$0	\$0	\$0	\$0	\$0	\$0	\$0	\$0	\$0	\$0	\$0	\$0	\$0	\$0	\$0
Presenting Data & Information	\$0	\$0	\$0	\$0	\$0	\$0	\$0	\$0	\$0	\$0	\$0	\$0	\$0	\$0	\$0	\$0
Safe Routes to School 08/2005	\$0	\$0	\$0	\$0	\$0	\$0	\$0	\$0	\$0	\$0	\$0	\$0	\$0	\$0	\$0	\$0
Building Geodatabases - NYC 10/2006		\$2,419	\$0	\$0	\$0	\$0	\$0	\$0	\$0	\$0	\$2,419	\$0	\$2,419	\$0	\$0	\$0
Travel Expenses		\$3,704	\$0	\$0	\$0	\$0	\$0	\$0	\$0	\$0	\$3,704	\$0	\$3,704	\$0	\$0	\$0
Building Geodatabases - Johnstown 10/2006		\$9,720	\$0	\$0	\$0	\$0	\$0	\$0	\$0	\$0	\$9,720	\$0	\$9,720	\$0	\$0	\$0
Travel Expenses		\$683	\$0	\$0	\$0	\$0	\$0	\$0	\$0	\$0	\$683	\$0	\$683	\$0	\$0	\$0
ARC GIS Network Analyst 11/2006		\$7,318	\$0	\$0	\$0	\$0	\$0	\$0	\$0	\$0	\$7,318	\$0	\$7,318	\$0	\$0	\$0
AMPO Annual Conf.- Robert Shepard Expenses - 11/2006		\$2,689	\$0	\$0	\$0	\$0	\$0	\$0	\$0	\$0	\$2,689	\$0	\$2,689	\$0	\$0	\$0
Transcad Training- Mathew Grabau - 03/2007		\$330	\$1,170	\$0	\$0	\$0	\$0	\$0	\$0	\$0	\$1,500	\$0	\$1,500	\$0	\$0	\$0
Transcad Training- 07/16 - 07/20/07		\$1,500	\$0	\$0	\$0	\$0	\$0	\$0	\$0	\$0	\$1,500	\$0	\$1,500	\$0	\$0	\$0
Transcad Training- 10/10 - 10/12/07		\$0	\$0	\$0	\$0	\$0	\$0	\$4,285	\$0	\$0	\$0	\$4,285	\$0	\$4,285	\$0	\$0
Transcad Training- 04/23/07		\$1,556	\$0	\$0	\$0	\$0	\$0	\$0	\$0	\$0	\$1,556	\$0	\$1,556	\$0	\$0	\$0
VISSIM/VISUM Training- 06/25 - 06/28/07		\$7,500	\$0	\$0	\$0	\$0	\$0	\$0	\$0	\$0	\$7,500	\$0	\$7,500	\$0	\$0	\$0
TOTAL TRAINING	\$0	\$50,000	\$52,179	\$0	\$0	\$0	\$0	\$42,500	\$0	\$0	\$102,179	\$42,500	\$102,179	\$12,240	\$0	\$30,260

PROGRAM YEAR----->	FTA MPP SCI SET-ASIDES														FUND EXPENDED	AVAILABLE BALANCE	
	1999/00	2000/01	2001/02	2002/03	2003/04	2004 - 2007	2007/08		2008/09		TOTAL FUNDING		MPP	SPR		MPP	SPR
							MPP	SPR	MPP	SPR	MPP	SPR					
General	\$0	\$0	\$0	\$0	\$0	\$0	\$115,918	\$0	\$10,563			\$126,481	\$0	\$0	\$0	\$126,481	\$0
Freight Data	\$0	\$10,000	\$5,000	\$0	\$0	\$0	\$0	\$0				\$15,000	\$0	\$15,000	\$0	\$0	\$0
GIS Training and Software	\$0	\$40,000	\$73,137	\$0	\$0	\$0	\$0	\$0				\$113,137	\$0	\$113,137	\$0	\$0	\$0
Strategic Dec. Making Initiative	\$0	\$0	\$0	\$0	\$17,930	\$0	\$0	\$0				\$17,930	\$0	\$17,930	\$0	\$0	\$0
Turbo Architecture	\$0	\$5,400	\$0	\$0	\$0	\$0	\$0	\$0				\$5,400	\$0	\$5,400	\$0	\$0	\$0
Est. Reg Mobile Source Emissions	\$0	\$6,900	\$0	\$0	\$0	\$0	\$0	\$0				\$6,900	\$0	\$6,900	\$0	\$0	\$0
Safe Routes to School 11/2005	\$0	\$11,942	\$0	\$0	\$0	\$0	\$0	\$0				\$11,942	\$0	\$11,942	\$0	\$0	\$0
Travel Demand Forecasting 03/2006	\$0	\$13,592	\$0	\$0	\$0	\$0	\$0	\$0				\$13,592	\$0	\$13,592	\$0	\$0	\$0
Accessible Pedestrian Signals	\$0	\$3,404	\$0	\$0	\$0	\$0	\$0	\$0				\$3,404	\$0	\$3,404	\$0	\$0	\$0
MPO Conference Training	\$0	\$651	\$0	\$0	\$0	\$0	\$0	\$0				\$651	\$0	\$651	\$0	\$0	\$0
Presenting Data & Information	\$0	\$3,240	\$0	\$0	\$0	\$0	\$0	\$0				\$3,240	\$0	\$3,240	\$0	\$0	\$0
Safe Routes to School 08/2005	\$0	\$0	\$11,863	\$0	\$0	\$0	\$0	\$0				\$11,863	\$0	\$11,863	\$0	\$0	\$0
Building Geodatabases - NYC 10/2006		\$4,871	\$0	\$0	\$0	\$0	\$0	\$0				\$4,871	\$0	\$4,871	\$0	\$0	\$0
Travel Expenses		\$0	\$0	\$0	\$0	\$0	\$0	\$0				\$0	\$0	\$0	\$0	\$0	\$0
Building Geodatabases - Johnstown 10/2006		\$0	\$0	\$0	\$0	\$0	\$0	\$0				\$0	\$0	\$0	\$0	\$0	\$0
Travel Expenses		\$0	\$0	\$0	\$0	\$0	\$0	\$0				\$0	\$0	\$0	\$0	\$0	\$0
ArcGIS Network Analyst 11/2006		\$0	\$0	\$0	\$0	\$0	\$0	\$0				\$0	\$0	\$0	\$0	\$0	\$0
ArcGIS Training - ERSI - 07/24/07	\$0	\$0	\$4,480	\$0	\$0	\$0	\$0	\$0				\$4,480	\$0	\$4,480	\$0	\$0	\$0
AMPO Annual Conf.- Robert Shepard Expenses - 11/2006		\$0	\$0	\$0	\$0	\$0	\$0	\$0				\$0	\$0	\$0	\$0	\$0	\$0
VISSIM/VISUM & TransCAD Travel Expenses - 8/20/07		\$0	\$1,498	\$0	\$0	\$0	\$0	\$0				\$1,498	\$0	\$1,498	\$0	\$0	\$0
Transcad Training- 10/10 - 10/12/07		\$0	\$1,715	\$0	\$0	\$0	\$0	\$0				\$1,715	\$0	\$1,715	\$0	\$0	\$0
Transcad Training- Mathew Grabau - 03/2007		\$0	\$0	\$0	\$0	\$0	\$0	\$0				\$0	\$0	\$0	\$0	\$0	\$0
NTI Training 2/6 - 2/9/08			\$0	\$0	\$0	\$0	\$1,962	\$0				\$1,962	\$0	\$1,962	\$0	\$0	\$0
NTI Intro to Transp. Conformity 1/23/08 - 1/25/08			\$0	\$0	\$0	\$0	\$3,361	\$0				\$3,361	\$0	\$3,361	\$0	\$0	\$0
NHI Safety Course 9/11/07			\$3,780	\$0	\$0	\$0	\$0	\$0				\$3,780	\$0	\$3,780	\$0	\$0	\$0
TOTAL TRAINING	\$0	\$100,000	\$101,473	\$0	\$17,930	\$0	\$121,241	\$0	\$10,563	\$0	\$351,207	\$0	\$224,726	\$0	\$126,481	\$0	\$0

2009 Amendment for the
2008 - 2010 UPWP
PROGRAM OUTLINE

THIS TABLE IS FOR INFORMATIONAL PURPOSES ONLY. THE INDICATED BREAKDOWN OF ESTIMATED
STAFF/CONTRACTUAL ASSIGNMENTS AND BUDGETS ARE SUBJECT TO MODIFICATION AS NEEDED.

ID	Category	2009-2010			Notes
		Project Total	Staff & Operating Expense Budget	Contractual Budget	
1.	Program Administration and Support (44.21.00)				
A.	General Administration	\$225,000	\$160,000	\$65,000	Contractual for Host Agency Agreement.
B.	Professional Services - Miscellaneous	\$1,500	\$1,500	\$0	Contractual for Miscellaneous Consultant Services as necessary.
C.	Public Participation	\$25,000	\$25,000	\$0	
D.	SAFETEA-LU / Federal Legislation Adherence	\$5,000	\$5,000	\$0	
E.	UPWP Previous Year Closeouts	\$9,000	\$9,000	\$0	
F.	UPWP Maintenance and Development	\$9,000	\$9,000	\$0	
	Total Program Administration & Support	\$274,500	\$209,500	\$65,000	
2.	Short Range Transportation Planning (44.24.00)				
A.	Census Data Compilation and/or Analysis	\$5,000	\$5,000	\$0	
B.	Data Collection, Compilation and/or Analysis	\$30,000	\$10,000	\$20,000	Contractual for Traffic Counts as necessary.
C.	Functional Classification System Review	\$4,000	\$4,000	\$0	
D.	Geographic Information Systems - SMTC	\$29,000	\$29,000	\$0	
E.	Geographic Information Systems - Member Agency Assistance	\$29,000	\$29,000	\$0	Purpose is to provide GIS services to Member Agencies related to regional planning.
	Total Short Range Transportation Planning	\$97,000	\$77,000	\$20,000	
3.	Long-Range Transportation Planning (44.23.02)				
A.	Air Quality, Conformity and Energy	\$20,000	\$20,000	\$0	
B.	Air/Water Planning	\$5,000	\$5,000	\$0	
C.	Bicycle/Pedestrian Planning	\$22,500	\$15,000	\$7,500	Bicycle Suitability Map Update.
D.	Bridge & Pavement Condition Management System (BPCMS)	\$10,000	\$10,000	\$0	
E.	Clay/Cicero Rt. 31 Transportation Study	\$7,500	\$7,500	\$0	Study wrap up/completion.
F.	Congestion Management Process (CMP)	\$15,000	\$15,000	\$0	
G.	CSX Intermodal Transportation Study	\$65,000	\$10,000	\$55,000	To be initiated at the mid year point due to possible rescission.
H.	University Hill Bike Network Project	\$0	\$0	\$0	Completed project.
I.	Downer Street Corridor Study	\$0	\$0	\$0	Completed project.
J.	Emergency Travel Study	\$0	\$0	\$0	Deferred to future year due to fiscal limitations.
K.	Environmental Justice	\$7,500	\$7,500	\$0	
L.	I-81 Public Participation Project	\$200,000	\$25,000	\$175,000	Contractual for Consultant Services as necessary.
M.	I-81 Travel Demand Modeling Project	\$100,000	\$10,000	\$90,000	Contractual for Consultant Services as necessary.
N.	MPO Area Regional Planning Initiatives	\$15,000	\$15,000	\$0	
O.	Long Range Transportation Plan	\$50,000	\$50,000	\$0	
P.	Northern MPA Planning	\$5,000	\$5,000	\$0	
Q.	Operations and Integration	\$5,000	\$5,000	\$0	
R.	Rail, Truck and Transit Planning	\$30,000	\$30,000	\$0	
S.	Traffic Safety	\$12,000	\$12,000	\$0	
T.	Transportation/Land Use Educational Outreach	\$10,000	\$10,000	\$0	
U.	Travel Demand Modeling	\$55,000	\$35,000	\$20,000	
V.	University Hill Transportation Study Phase II: Feasibility Study for Park and Ride Initiative	\$56,000	\$6,000	\$50,000	
W.	University Hill Transportation Study Phase II: Feasibility Study for Short Term Transportation Recommendations	\$0	\$0	\$0	Completed project (anticipated).
X.	Carrier Site Access Transportation Study	\$0	\$0	\$0	Completed project (anticipated).
Y.	Safety Improvement Analysis - City and County	\$40,000	\$40,000	\$0	
Z.	OCDOT Signal Optimization	\$45,000	\$5,000	\$40,000	To be initiated at the mid year point due to possible rescission.
AA.	SOCPA Development Guide Update Assistance	\$40,000	\$40,000	\$0	
BB.	Cicero Rt. 11 Corridor Study	\$50,000	\$20,000	\$30,000	Multi Year project that will require additional investment in 2010 - 2011 and will have a mid year start.
CC.	East Genesee Street Sidewalk Study	\$30,000	\$30,000	\$0	
DD.	Transportation Demand Management for Downtown Syracuse	\$75,000	\$25,000	\$50,000	Multi Year project that will require additional investment in 2010 - 2011 .
EE.	Clay Three Rivers Access Study	\$55,000	\$9,000	\$46,000	
FF.	CNYRTA Transit Initiative Study	\$85,000	\$35,000	\$50,000	Multi Year project that will require additional investment in future years.
GG.	Prospect Hill Parking and Transportation Study	\$40,000	\$40,000	\$0	
HH.	James Street Road Diet	\$45,000	\$5,000	\$40,000	
	Total Long Range Transportation Planning	\$1,195,500	\$542,000	\$653,500	
4.	Transportation Improvement Program (TIP) (44.25.00)				
A.	TIP Development & Maintenance	\$25,000	\$25,000	\$0	
	Total Transportation Improvement Program	\$25,000	\$25,000	\$0	
5.	Other Activities (44.27.00)				
A.	Miscellaneous Activities & Special Technical Assistance	\$19,580	\$19,580	\$0	
	Total Other Activities	\$19,580	\$19,580	\$0	
	Grand Total	\$1,611,580	\$873,080	\$738,500	

Rescission of Planning Funds

The very real likelihood of a rescission of the SMTC's planning funds in the 2009 - 2010 program year make the enclosed UPWP amendment's financial commitments unsure. If the rescission is in the range of \$100,000 to \$150,000 the enclosed program is expected to be able to be delivered as presented due to the monies available in carry over. If the rescission is dramatically more than that amount then the program will be examined for which projects can be deferred to a future year. With that in mind, new consultant projects will not enter the contractual stage until the dollar amount of the rescission is more defined for the SMTC by the FHWA.

A large rescission will necessitate a mid year amendment to this program with a revised project listing and expected accomplishments.

UNIFIED PLANNING WORK PROGRAM

FY 2008-2010

2009 - 2010 Amendment

1. PROGRAM ADMINISTRATION and SUPPORT

1A General Administration

1B Professional Services - Miscellaneous

1C Public Participation

1D SAFETEA-LU - Miscellaneous

1E UPWP Previous Year Closeouts

1F UPWP Maintenance and Development

PROJECT NO:	1A		
PROJECT TITLE:	General Administration		
OBJECTIVE:			
To initiate and properly manage the transportation planning process, ensuring that it is continuous, cooperative, and comprehensive, and in compliance with applicable State and Federal laws and regulations.			
METHODOLOGY:			
The SMTC provides staff support to the Policy, Executive and Planning Committees, in addition to other permanent and ad-hoc committees. The Staff will implement the work tasks as contained in this UPWP. Other administrative activities include, but are not limited to the following:			
<ul style="list-style-type: none">● Act as local liaison to NYSDOT, CNYRTA, CNY RPDB, and other transportation related agencies to ensure coordination;● Provide administrative support and technical assistance to the Policy, Executive, and Planning Committees, as well as other permanent and ad-hoc committees, as needed;● Maintain financial records of all revenues and expenditures;● Prepare and distribute meeting notices and agenda packages for all SMTC committees;● Prepare certification documentation, agreements, resolutions, memoranda of understanding (MOU's), etc.;● Review and modify the Operations Plan as a result of modifications to the Metropolitan Planning Area and Urban Area Boundaries, as necessary;● Attend NYSDOT, FHWA, FTA, and MPO training sessions and other necessary workshops and meetings as appropriate;● Maintain agreements between local governmental agencies and the MPO;● Prepare and distribute quarterly progress reports and other documents as required;● Interact/participate in NYS AMPO, ITE, APA, and other professional affiliations, and allow for appropriate resources, travel and training as necessary;● Provide funds for the purchase and maintenance of computer hardware and software to support the MPO planning program and related activities, including network maintenance;● Continue the SMTC's commitment to comply with Title VI of the Civil Rights Act of 1964;● Continue the SMTC's commitment to ensure that all of their programs and activities sufficiently address Environmental Justice principles and procedures, as appropriate; and● Continue to comply with the NYSDOT's Disadvantaged Business Enterprise Program.			
END PRODUCT:			
The ability to operate the agency as a functional entity; the ability to meet federal and state requirements; the ability to meet local government expectations; Committee Documentation – including: reports, meeting minutes, committee mailings, and related materials; staff involvement in relevant organizations and activities; and adequate computer resources to meet the MPO planning activity requirements.			
Project Sponsor / Participating Agencies:		Funding Sources:	
Sponsor: SMTC		FHWA (PL)	<div>2008-2009</div> <div>\$ 191,250</div> <div>2009-2010</div> <div>\$ 202,500</div>
Participating Agencies: SMTC, CNY RPDB, Other Agencies as Appropriate		FTA (Sec. 5303)	<div>\$ 33,750</div> <div>\$ 22,500</div>
		TOTAL	<div>\$ 225,500</div> <div>\$ 225,000</div>
			<div>\$450,500</div>

PROJECT NO:	1B		
PROJECT TITLE:	Professional Services - Miscellaneous		
OBJECTIVE: To allow Central Staff to utilize consultants for specific minor engineering, planning, training or other necessary services as needed in support of the various annual planning activities at the SMTC.			
METHODOLOGY: This task provides access to expert professional services when required by Central Staff in support of the various annual planning activities. Specifically, it allows the SMTC to retain the services of consultants to assist with specific technical activities associated with a given project where current staff expertise may not be sufficient. Examples include, but are not limited to: <ul style="list-style-type: none"> ● Selected Traffic / Transportation Engineering Activities; ● Selected Travel Demand Modeling Activities; ● Selected Transportation Planning Activities; and ● Other skills that may be necessary to support the UPWP but may be currently absent at the staff level. 			
END PRODUCT: Professional services to the Central Staff in support of the various planning activities outlined in the 2008-2010 UPWP.			
Project Sponsor / Participating Agencies:		Funding Sources:	
Sponsor: SMTC Participating Agencies: SMTC, CNY RPDB			
		FHWA (PL) <u>2008-2009</u> <u>2009-2010</u> \$4,750 \$1,260 FTA (Sec. 5303) \$ 250 \$ 240 TOTAL \$5,000 \$1,500 \$6,500	

PROJECT NO:	1C			
PROJECT TITLE:	Public Participation			
OBJECTIVE: To enhance the SMTC's transportation planning process with greater opportunities for public participation, input, involvement, and exposure.				
METHODOLOGY: This task generally provides for the dissemination of information to the public about the transportation planning program. It also covers receiving public comment and input on transportation planning activities through public information meetings both hosted and attended by the SMTC. Specifically, this task includes the development of strategies for improving the public's access to the MPO planning process, including all stages of the development of MPO planning documents and studies. As part of this task, the SMTC will continue to ensure that the principles of Environmental Justice, including minority and low-income communities, are included and represented in all public outreach efforts. The techniques for the dissemination of information include, but are not limited to the following: <ul style="list-style-type: none"> • Newsletters; • Brochures and flyers; • Study reports and technical memoranda; • Public information meetings/workshops and conferences; • Media releases, press articles, and paid advertisements/features; • Direct contact with public/citizens mailing lists; • Transportation "fairs", exhibits or expositions; and • SMTC Web site (www.smtcmpo.org). Public participation opportunities (public input) include: <ul style="list-style-type: none"> • Public meetings/workshops; • Task Forces, focus groups; • Study Advisory Committees and Stakeholders database; and • Surveys, questionnaires, comment cards, etc. 				
END PRODUCT: Public Participation opportunities/activities, including SMTC newsletters, reports, press releases, maps, and slide presentations, Web site maintenance, meetings, workshops, etc.				
Project Sponsor / Participating Agencies:		Funding Sources:		
Sponsor: SMTC Participating Agencies: SMTC, SMTC Member Agencies, Other Agencies as Appropriate		FHWA (PL)	<u>2008-2009</u> \$15,000	<u>2009-2010</u> \$21,250
		FTA (Sec. 5303)	\$ 5,000	\$ 3,750
		TOTAL	\$20,000	\$25,000
		\$45,000		

PROJECT NO:	1D																
PROJECT TITLE:	SAFETEA-LU - Federal Legislation Adherence																
OBJECTIVE: <p>To provide funds to allow the Central Staff to comply with the Safe, Accountable, Flexible, Efficient Transportation Equity Act: A Legacy for Users (SAFETEA-LU) legislation and to educate themselves on the regulations and requirements.</p>																	
METHODOLOGY: <p>With the passage of the transportation bill, “Safe, Accountable, Flexible, Efficient Transportation Equity Act: A Legacy for Users” (SAFETEA-LU), there are specific regulations and requirements for Metropolitan Transportation Planning. The Federal Highway Administration, the Federal Transit Administration and the New York State Department of Transportation, as well as many other professional organizations, are in the process of drafting various guidance to assist MPOs in interpreting and implementing the new regulations.</p>																	
END PRODUCT: <p>Improved knowledge of the Central Staff regarding the regulations and requirements of SAFETEA-LU as well as required continued compliance.</p>																	
Project Sponsor / Participating Agencies:		Funding Sources:															
Sponsor: SMTC Participating Agencies: SMTC, SMTC Member Agencies, Other Agencies as Appropriate		<table border="1"> <thead> <tr> <th></th> <th><u>2008-2009</u></th> <th><u>2009-2010</u></th> </tr> </thead> <tbody> <tr> <td>FHWA (PL)</td> <td>\$ 2,500</td> <td>\$ 4,250</td> </tr> <tr> <td>FTA (Sec. 5303)</td> <td>\$ 2,500</td> <td>\$ 750</td> </tr> <tr> <td>TOTAL</td> <td>\$ 5,000</td> <td>\$ 5,000</td> </tr> <tr> <td></td> <td colspan="2">\$ 10,000</td> </tr> </tbody> </table>		<u>2008-2009</u>	<u>2009-2010</u>	FHWA (PL)	\$ 2,500	\$ 4,250	FTA (Sec. 5303)	\$ 2,500	\$ 750	TOTAL	\$ 5,000	\$ 5,000		\$ 10,000	
	<u>2008-2009</u>	<u>2009-2010</u>															
FHWA (PL)	\$ 2,500	\$ 4,250															
FTA (Sec. 5303)	\$ 2,500	\$ 750															
TOTAL	\$ 5,000	\$ 5,000															
	\$ 10,000																

PROJECT NO:	1E		
PROJECT TITLE:	UPWP Previous Year Closeouts		
OBJECTIVE: <p>To provide a task, and thus a billing code, for closing out various UPWP activities from the previous program year.</p>			
METHODOLOGY: <p>At the end of each program year, there are often various administrative tasks that need to be completed in order to officially close out a project. Such activities typically include the reproduction and distribution of Final Reports that were approved prior to the close of the program year. Since there are no planning activities remaining, the project is not carried over and therefore does not possess a billing code to charge these final administrative tasks.</p> <p>This task is included as a “catch-all” to cover the administrative tasks necessary to completely close out various projects from the previous program year.</p>			
END PRODUCT: <p>Completion of required minor tasks necessary to completely close out various projects/efforts from the previous program year.</p>			
Project Sponsor / Participating Agencies:		Funding Sources:	
Sponsor: SMTC Participating Agencies: SMTC, CNYRPDB			
		<u>2008-2009</u> FHWA (PL) \$ 9,000 FTA (Sec. 5303) \$ \$ TOTAL \$ 9,000	<u>2009-2010</u> \$ 9,000 \$ \$ \$ 9,000
		<div style="border: 1px solid black; padding: 2px; display: inline-block;">\$ 18,000</div>	

PROJECT NO:	1F		
PROJECT TITLE:	UPWP Maintenance and Development		
OBJECTIVE: Maintain the 2008-2010 Unified Planning Work Program (UPWP) as necessary and develop a subsequent work program accordingly.			
METHODOLOGY: This task includes all necessary work required to process amendments to the 2008-2010 UPWP. In addition, this task will allow for an amendment to the 2008-2010 UPWP during the 2008-2009 program year to finalize the program for the 2009-2010 year as required by federal regulations. The UPWP indicates local, state, and federal funding of the UPWP work tasks and identifies the participating agencies for completing the work. The UPWP will be developed according to measures deemed necessary to ensure a “3C” planning process, one that is <u>c</u> ontinuing, <u>c</u> ooperative, and <u>c</u> omprehensive.			
END PRODUCT: Maintenance of and amendments to the 2008-2010 UPWP as necessary and appropriate and the development of the 2009-2010 UPWP Amendment.			
Project Sponsor / Participating Agencies:		Funding Sources:	
Sponsor: SMTC Participating Agencies: SMTC, SMTC Member Agencies, Other Agencies as Appropriate		<u>2008-2009</u> FHWA (PL) \$ 9,500 FTA (Sec. 5303) \$ 500 \$ 10,000 TOTAL	<u>2009-2010</u> \$ 8,100 \$ 900 \$ 9,000
		<div style="border: 1px solid black; padding: 2px; display: inline-block;">\$19,000</div>	

UNIFIED PLANNING WORK PROGRAM

FY 2008-2010

2009 - 2010 Amendment

2. SHORT-RANGE TRANSPORTATION PLANNING

- 2A Census Data Compilation, and/or Analysis**
- 2B Data Collection, Compilation, and/or Analysis**
- 2C Functional Classification System Review**
- 2D Geographic Information Systems (GIS) - SMTC**
- 2E Geographic Information Systems (GIS) - Member Agency Assistance**

PROJECT NO:	2A		
PROJECT TITLE:	Census Data Compilation and/or Analysis		
OBJECTIVE: To continue to utilize the Census Transportation Planning Package and U.S. Census Data accordingly. Additionally, to provide Census data, information and analysis as input into appropriate SMTC planning studies. This effort supports Long Range Transportation Planning Activities, Travel Demand Modeling, Environmental Justice, and general transportation planning for the MPO.			
METHODOLOGY: This UPWP task is an ongoing activity of the SMTC. It allows for staff to utilize various Census data for Long Range Transportation Planning Activities, Travel Demand Modeling, Environmental Justice, and general transportation planning completed by the MPO. Additionally, member agencies frequently request that the SMTC create customized census data products for their needs. This project allows for SMTC staff to complete those requests.			
END PRODUCT: A valuable data set to support the varied planning activities of the MPO.			
Project Sponsor / Participating Agencies:		Funding Sources:	
Sponsor: SMTC Participating Agencies: SMTC, Other Agencies as Appropriate			
		<u>2008-2009</u> FHWA (PL) \$ 6,375 FTA (Sec. 5303) \$ 1,125 \$ 7,500 TOTAL	<u>2009-2010</u> \$4,300 \$ 700 \$5,000
			<div style="border: 1px solid black; padding: 2px; display: inline-block;">\$12,500</div>

PROJECT NO:	2B																	
PROJECT TITLE:	Data Collection, Compilation, and/or Analysis																	
OBJECTIVE: To collect, analyze and utilize various forms of data that assist in the everyday planning operation of the Metropolitan Planning Organization (MPO).																		
METHODOLOGY: This UPWP task involves the following subcategories: <ul style="list-style-type: none"> i. Transit Data Collection: The collection of transit ridership, scheduling and routing information by both the Central New York Regional Transportation Authority (CNYRTA) and by the SMTC to fill project-specific data needs. It is intended that the CNYRTA will collect this data and provide it to the SMTC in a timely manner. If the CNYRTA is unable to provide the SMTC with the requested data, the SMTC will utilize the funds available for this category to obtain the data elsewhere. The SMTC will provide CNYRTA with project-specific data needs as requested. ii. Vehicle Data Collection: The collection of traffic count data and turning movement count data required in support of the SMTC's planning activities. This will be done in accordance with the adopted Traffic Count Protocol procedures at the SMTC. Additionally, this subcategory will include the ongoing effort of maintaining a central database of vehicle traffic counts for the MPO area. At the request of OCDOT, this item also includes resources for assistance with traffic counts needed for their organization. iii. Other Information: Other data as necessary in support of the planning activities of the SMTC. 																		
END PRODUCT: The end product is transit, vehicular and other data sets as necessary. This data is used in the various multi-modal studies and activities undertaken by the SMTC.																		
Project Sponsor / Participating Agencies:		Funding Sources:																
Sponsor: SMTC Participating Agencies: SMTC, SMTC Member Agencies, Other Agencies as Appropriate		<table border="1"> <thead> <tr> <th></th> <th><u>2008-2009</u></th> <th><u>2009-2010</u></th> </tr> </thead> <tbody> <tr> <td>FHWA (PL)</td> <td>\$ 35,150</td> <td>\$ 27,000</td> </tr> <tr> <td>FTA (Sec. 5303)</td> <td>\$ 1,850</td> <td>\$ 3,000</td> </tr> <tr> <td>TOTAL</td> <td>\$ 37,000</td> <td>\$ 30,000</td> </tr> <tr> <td></td> <td colspan="2">\$ 67,000</td> </tr> </tbody> </table>			<u>2008-2009</u>	<u>2009-2010</u>	FHWA (PL)	\$ 35,150	\$ 27,000	FTA (Sec. 5303)	\$ 1,850	\$ 3,000	TOTAL	\$ 37,000	\$ 30,000		\$ 67,000	
	<u>2008-2009</u>	<u>2009-2010</u>																
FHWA (PL)	\$ 35,150	\$ 27,000																
FTA (Sec. 5303)	\$ 1,850	\$ 3,000																
TOTAL	\$ 37,000	\$ 30,000																
	\$ 67,000																	

PROJECT NO:	2C		
PROJECT TITLE:	Functional Classification System Review		
OBJECTIVE: To conduct a review, and make changes if necessary, of the MPO functional classification system to ensure that it is consistent and coordinated with the recently modified functional classification in the City of Syracuse.			
METHODOLOGY: <p>The SMTC has recently completed a comprehensive review of the entire street network in the City of Syracuse and will be making recommendations for the reclassification of various streets.</p> <p>The next phase of this project is to examine the surrounding MPO area as some of the changes made to the functional classification within the City will most likely have implications on the surrounding area. Changes outside of the City may be necessary for a variety of reasons including continuity, functionality, and distribution of the percentage of functional classification types within the system.</p> <p>This process will be led by the SMTC staff, however it will involve extensive input from appropriate entities and member agencies including, but not limited to the City of Syracuse, the New York State Department of Transportation, and the Onondaga County Department of Transportation.</p> <p>The majority of this task was completed in previous years, however, some funding is being programmed for the 2008-2010 program years to complete and wrap-up the project.</p>			
END PRODUCT: A revised functional classification system for the entire MPO area.			
Project Sponsor / Participating Agencies:		Funding Sources:	
Sponsor: SMTC Participating Agencies: SMTC, SMTC Member Agencies		2008-2009 FHWA (PL) \$ 4,000 FTA (Sec. 5303) \$ 0 TOTAL \$ 4,000	2009-2010 \$ 4,000 \$ 0 \$ 4,000
		<div style="border: 1px solid black; padding: 2px; text-align: center;">\$ 8,000</div>	

PROJECT NO:	2D			
PROJECT TITLE:	Geographic Information Systems (GIS) - SMTC			
OBJECTIVE: To manage the data and software requirements necessary for maintaining and using the SMTC's Geographic Information System (GIS) to support the Metropolitan Planning Organization's (MPO) planning activities.				
METHODOLOGY: <p>The SMTC utilizes various transportation-related GIS files as part of routine planning and analysis. As additional information becomes available digitally from the SMTC's member agencies each year, the role of GIS is becoming pervasive.</p> <p>To fully allow the SMTC to utilize GIS in its work program, there are necessary enhancements and routine maintenance efforts that must be undertaken as part of its work program annually. These efforts will allow the SMTC to more fully utilize GIS in relation to vehicle traffic counts, transit ridership, pavement condition monitoring, functional classification, demographic analysis, linking of Travel Demand Model data to GIS data, and other related efforts. Additionally, GIS will be used for demographic analysis for the identification of specific locations within the MPO area in need of attention under the Environmental Justice initiative.</p> <p>Anticipated activities include:</p> <ul style="list-style-type: none"> ●Coordination with member agencies to ensure that the most recent data is being used; ●File maintenance of the SMTC's GIS data layers; ●Linking CTPP data with relevant SMTC GIS layers; ●Continuing linking Vehicle Data Collection activities with the GIS database to allow for easy access to most up-to-date traffic counts for road segments (AADT); ●Continue development of a GIS layer of turning movement count locations and data sheets to allow for easy access to turning movement count data sets; and ●GIS data acquisition, maintenance, and manipulation as required in support of the various UPWP planning efforts that will utilize GIS data. 				
END PRODUCT: Enhanced coordination between the SMTC and various Federal, State, and local agencies to allow for up-to-date GIS data and files. Additionally, enhanced data sets that support the SMTC's planning efforts and high quality cartographic products as required for various UPWP projects.				
Project Sponsor / Participating Agencies:		Funding Sources:		
Sponsor: SMTC Participating Agencies: SMTC, SMTC Member Agencies		FHWA (PL)	<i>2008-2009</i> \$ 46,750	<i>2009-2010</i> \$ 24,650
		FTA (Sec. 5303)	\$ 8,250	\$ 4,350
		TOTAL	\$ 55,000	\$ 29,000
		\$ 84,000		

PROJECT NO:	2E		
PROJECT TITLE:	Geographic Information Systems (GIS) - Member Agency Assistance		
OBJECTIVE:			
To manage the data and software requirements necessary for maintaining and using the SMTC’s Geographic Information System (GIS) to support the regional planning needs of the Metropolitan Planning Organization’s (MPO) member agencies as they relate to the mission of the SMTC.			
METHODOLOGY:			
As outlined in project 2D Geographic Information Systems (GIS) - SMTC, the SMTC’s staff is highly capable of using and maintaining GIS data and creating appropriate end products. This item’s purpose is to provide those services to SMTC member agencies as they relate to regional planning and the core mission of the SMTC.			
Anticipated activities include:			
<ul style="list-style-type: none">• Maintenance of appropriate data libraries;• Creation of custom data sets;• Map creation and editing;• Maintenance of appropriate data libraries;• GIS data acquisition, maintenance, and manipulation as required in support of the various planning efforts that will utilize GIS data.			
This GIS support project involves Central Staff providing member agencies with GIS products such as maps and associated spreadsheets on an as needed basis. The GIS maps would be produced for the member agency by request and reviewed by requesting agency. A procedure for requests and fulfilment and review will be put into place in support for this project.			
END PRODUCT:			
Enhanced coordination between the SMTC and various Federal, State, and local agencies to allow for up-to-date GIS data and files. Additionally, enhanced data sets that support the member agencies’ planning efforts and high quality cartographic products as required for various regional planning projects in support of the SMTC’s mission.			
Project Sponsor / Participating Agencies:		Funding Sources:	
Sponsor: CNYRPDB Participating Agencies: SMTC, SMTC Member Agencies			

UNIFIED PLANNING WORK PROGRAM

FY 2008-2010

2009 - 2010 Amendment

3. LONG-RANGE TRANSPORTATION PLANNING

- 3A Air Quality, Conformity and Energy**
- 3B Air/Water Planning**
- 3C Bicycle/Pedestrian Planning**
- 3D Bridge and Pavement Condition Management System (BPCMS)**
- 3E Clay/Cicero Rt. 31 Transportation Study**
- 3F Congestion Management Process(CMP)**
- 3G CSX Intermodal Transportation Study**
- 3H University Hill Bike Network Project**
- 3I Downer Street Corridor Study**
- 3J Emergency Travel Study**
- 3K Environmental Justice Analysis**
- 3L I-81 Public Participation Project**
- 3M I-81 Travel Demand Modeling**
- 3N MPO Regional Planning Initiatives**
- 3O Long Range Transportation Plan**
- 3P Northern MPA Planning**
- 3Q Operations and Integration**
- 3R Rail, Truck and Transit Planning**
- 3S Traffic Safety**
- 3T Transportation/Land Use Educational Outreach**
- 3U Travel Demand Modeling**
- 3V University Hill Transportation Study Phase II: Feasibility Study for Park and Ride Initiative**
- 3W University Hill Transportation Study Phase II: Feasibility Study for Short Term Transportation Recommendations**
- 3X Carrier Site Access Transportation Study**
- 3Y Safety Improvement Analysis - City and County**
- 3Z OCDOT Signal Optimization**
- 3AA SOCPA Development Guide Assistance**
- 3BB Cicero Rt. 11 Corridor Study**
- 3CC East Genesee Street Sidewalk Study**
- 3DD Transportation Demand Management for Downtown Syracuse**
- 3EE Clay Three Rivers Access Study**
- 3FF CNYRTA Transit Initiative Study**
- 3GG Prospect Hill Parking and Transportation Study**
- 3HH James Street Road Diet**

PROJECT NO:	3A		
PROJECT TITLE:	Air Quality, Conformity and Energy		
OBJECTIVE: To continue to provide for air quality planning initiatives and activities that comply with the conformity requirements of the Clear Air Act Amendments of 1990, the New York State Energy Plan and the State Implementation Plan for Air Quality.			
METHODOLOGY: <p>Activities continue to increase due to changes in the regulations governing air quality and transportation planning. Air quality activities are related to the Transportation Improvement Program (TIP) and Long Range Transportation Plan (LRTP) conformity determinations, Congestion Mitigation Air Quality (CMAQ) project-specific analysis as well as other projects and programs at the federal, state and local levels. The SMTC will continue to expand its cooperative relationship with all of the appropriate agencies to address the necessary requirements. These efforts are designed to enhance local ambient air quality as part of its overall strategy to meet Federal and State clean air regulations, promote public health, advance energy policy, and assist local development. Coordination and communications with the New York State Department of Environmental Conservation (NYSDEC) and the New York State Department of Transportation's Environmental Science Bureau will continue regarding the revision to the State Implementation Plan (SIP), which will ultimately result in a new maintenance plan, updated mobile source emission budgets, and require a redetermination of conformity for the SMTC TIP and LRTP.</p> <p>As experienced over the past year, the level of staff effort to address the numerous issues associated with this task increased immensely and it is anticipated that the level of staff effort, and staff skills will need to be expanded in the future.</p>			
END PRODUCT: TIP and LRTP Conformity Analysis as well as ongoing adherence to all Federal and State programs and requirements relating to air quality, conformity and energy at the SMTC.			
Project Sponsor / Participating Agencies:		Funding Sources:	
Sponsor: SMTC Participating Agencies: SMTC, SMTC Member Agencies, Other Agencies as Appropriate		2008-2009 FHWA (PL) \$ 16,500 FTA (Sec. 5303) \$ 5,500 TOTAL \$ 22,000	2009-2010 \$ 17,000 \$ 3,000 \$ 20,000
		<div style="border: 1px solid black; padding: 2px; text-align: center;">\$ 42,000</div>	

PROJECT NO:	3B																
PROJECT TITLE:	Air/Water Planning																
OBJECTIVE: To include multi-modal transportation planning in the Metropolitan Planning Organization (MPO) process, in order to effectively address air and water transportation issues, for moving both people and freight, as appropriate.																	
METHODOLOGY: <ul style="list-style-type: none"> • Provide input and technical assistance from a multi-modal perspective to all SMTC transportation projects in order that air and water travel are given appropriate consideration to any given SMTC project; • Conduct data collection, identify and assess existing conditions, develop and evaluate alternatives and/or prepare recommendations as required; • Identify issues of concern within the Air/Water multi-modal arena for which a focused substantive transportation study may be appropriate; • Provide staff support to Air/Water multi-modal advisory committees and utilize, as appropriate, the committees as resources for providing input to specific multi-modal projects as well as multi-modal program development; and • Begin the process to update and reprint the SMTC Canal Services Brochure over the 2008-2010 cycle. 																	
END PRODUCT: Maintenance of a multi-modal component in all SMTC transportation projects, and miscellaneous technical reports and memoranda as appropriate. A revised and reprinted Canalway Map.																	
Project Sponsor / Participating Agencies:		Funding Sources:															
Sponsor: SMTC Participating Agencies: SMTC, Other Agencies as Appropriate		<table border="1"> <thead> <tr> <th></th> <th><u>2008-2009</u></th> <th><u>2009-2010</u></th> </tr> </thead> <tbody> <tr> <td>FHWA (PL)</td> <td>\$ 5,000</td> <td>\$ 5,000</td> </tr> <tr> <td>FTA (Sec. 5303)</td> <td>\$ 0</td> <td>\$ 0</td> </tr> <tr> <td>TOTAL</td> <td>\$ 5,000</td> <td>\$ 5,000</td> </tr> <tr> <td></td> <td colspan="2">\$ 10,000</td> </tr> </tbody> </table>		<u>2008-2009</u>	<u>2009-2010</u>	FHWA (PL)	\$ 5,000	\$ 5,000	FTA (Sec. 5303)	\$ 0	\$ 0	TOTAL	\$ 5,000	\$ 5,000		\$ 10,000	
	<u>2008-2009</u>	<u>2009-2010</u>															
FHWA (PL)	\$ 5,000	\$ 5,000															
FTA (Sec. 5303)	\$ 0	\$ 0															
TOTAL	\$ 5,000	\$ 5,000															
	\$ 10,000																

PROJECT NO:	3C			
PROJECT TITLE:	Bicycle/Pedestrian Planning			
OBJECTIVE: <p>To include multi-modal transportation planning in the Metropolitan Planning Organization (MPO) process, in order to effectively address bicycle and pedestrian transportation issues. Activities under this task will also contribute to improved air quality in the MPO area.</p>				
METHODOLOGY: <ul style="list-style-type: none"> • Provide input and technical assistance from a multi-modal perspective to all SMTC transportation projects in order that bicycle and pedestrian travel are given appropriate consideration in any given SMTC project; • Conduct data collection, identify and assess existing conditions, develop and evaluate alternatives and/or prepare recommendations as required; • Identify issues of concern within the multi-modal arena for which a focused substantive transportation study may be appropriate; • Provide staff support to multi-modal advisory committees and utilize, as appropriate, the committees as resources for providing input to specific multi-modal projects as well as multi-modal program development; and • Revise, update and reprint the 2003 SMTC Bicycle Suitability Map over the 2008-2010 cycle. 				
END PRODUCT: <p>Maintenance of a multi-modal component in all SMTC transportation projects, and miscellaneous technical reports and memoranda. Revise, update and reprint the 2003 SMTC Bicycle Suitability Map for 2010.</p>				
Project Sponsor / Participating Agencies:		Funding Sources:		
Sponsor: SMTC Participating Agencies: SMTC, Other Agencies as Appropriate				
		FHWA (PL)	<u>2008-2009</u> \$ 28,800	<u>2009-2010</u> \$ 20,250
		FTA (Sec. 5303)	\$ 3,200	\$ 2,250
		TOTAL	\$ 32,000	\$ 22,500
		<div style="border: 1px solid black; padding: 2px; display: inline-block;">\$ 54,500</div>		

PROJECT NO:	3D		
PROJECT TITLE:	Bridge and Pavement Condition Management System (BPCMS)		
OBJECTIVE: Complete an annual working document for SMTC member agencies and staff on bridge and pavement conditions within the SMTC planning area.			
METHODOLOGY: A Bridge and Pavement Condition Management System (BPCMS) — a centralized database of all Federal-aid highways and bridges for cross jurisdictional comparisons — is beneficial to Metropolitan Planning Organizations (MPOs). The centralized database will also allow the SMTC and its member agencies to monitor progress toward long-range planning infrastructure goals. This database will be linked to the SMTC's Geographic Information System (GIS).			
END PRODUCT: Annual working document for SMTC and member agencies of bridge and pavement conditions that includes: (1) comprehensive database of bridge and pavement conditions; (2) comparative database for individual road segments that shows condition by jurisdiction by year for all federal aid eligible roads; and (3) written summary that contains the liberal use of maps, charts, and tables to show the current bridge and pavement conditions.			
Project Sponsor / Participating Agencies:		Funding Sources:	
Sponsor: SMTC Participating Agencies: SMTC, City of Syracuse, NYSDOT, NYSTA, OCDOT, Other Agencies as Appropriate		2008-2009 FHWA (PL) \$ 10,000 FTA (Sec. 5303) \$ 0 TOTAL \$ 10,000	2009-2010 \$ 10,000 \$ 0 \$ 10,000
		<div style="border: 1px solid black; padding: 2px; text-align: center;">\$ 20,000</div>	

PROJECT NO:	3E		
PROJECT TITLE:	Clay/Cicero Rt. 31 Transportation Study		
OBJECTIVE: To complete a transportation study for the Route 31 Corridor (and surrounding areas) in the Towns of Clay and Cicero that will examine the potential impact of transportation on the existing and future community, including land use decisions. The plan should be seamless with respect to town borders, and it should clearly state the preferred development goals and patterns.			
METHODOLOGY: The Clay/Cicero Route 31 Transportation Study is nearly completed. A final public meeting and review of the recommendations will be completed in the first portion of the program year. This will be followed by the completion of the Draft final report.			
END PRODUCT: This project will result in various Technical Memorandums and a Final Report.			
Project Sponsor / Participating Agencies:		Funding Sources:	
Sponsor: Towns of Cicero and Clay; SOCPA; and Onondaga County IDA; Participating Agencies: Towns of Cicero and Clay, SMTC, SMTC Member Agencies, Other Agencies as Appropriate		2008-2009 FHWA (PL) \$ 22,950 FTA (Sec. 5303) \$ 4,050 TOTAL \$ 27,000	2009-2010 \$ 6,750 \$ 750 \$ 7,500
		<div style="border: 1px solid black; padding: 2px; text-align: center;">\$ 34,500</div>	

PROJECT NO:	3F		
PROJECT TITLE:	Congestion Management Process (CMP)		
OBJECTIVE:			
To address Congestion Management at the MPO consistent with Federal requirements.			
METHODOLOGY:			
The Syracuse Metropolitan Transportation Council (SMTC) has developed a Congestion Management Process that is consistent with Federal requirements and State guidelines. In addition, it is consistent with the State’s Congestion Management Process. Staff has worked with local highway officials to determine the appropriate level of effort desired for voluntary CMP implementation strategies/programs.			
The CMP is now being completed on a two-year cycle and in ‘non-TIP’ years so that the results of the CMP can be utilized in determining which potential TIP projects may help to alleviate congestion.			
The revised CMP process utilizes the SMTC’s Travel Demand Modeling software to help identify areas of concern where further analysis will be undertaken consistent with the pre-existing processes.			
END PRODUCT:			
A completed CMP during the two year 2008-2010 program cycle.			
Project Sponsor / Participating Agencies:		Funding Sources:	
Sponsor: SMTC		2008-20092009-2010	
Participating Agencies: SMTC, City of Syracuse, NYSDOT, NYSTA, OCDOT, SOCPA, Other Agencies as Appropriate		FHWA (PL)\$ 18,000\$ 14,400	
		FTA (Sec. 5303)\$ 0\$ 600	
		\$	
		TOTAL\$ 18,000\$ 15,000	
		\$ 33,000	

PROJECT NO:	3G																	
PROJECT TITLE:	CSX Intermodal Transportation Study																	
OBJECTIVE: <p>To complete a detailed land use and transportation plan that will provide for improved road service to the CSX intermodal facility and other commercial and industrial uses in the study area.</p>																		
METHODOLOGY: <p>The CSX intermodal facility in the Town of DeWitt has been identified by local officials as a major resource in the community with the potential to help create a significant number of jobs through the State's inland port initiative. However, to capitalize upon this opportunity a more efficient transportation network must be developed to service this industrial / commercial area in the community. The purpose of this project is to develop a detailed engineering plan that will provide the basis for the necessary transportation improvements.</p> <p>This will be a consultant-based study. The consultant will be responsible for preparing an analysis/preliminary engineering program that will examine potential alignments for better intermodal connectivity between the rail yard, local road system, and the interstate system. Elements of the study will include confirmation of the project, project information and data collection, alternative development profiles, a generic environmental impact statement, a preliminary design and engineering report, and community presentations.</p>																		
END PRODUCT: <p>An engineering report that will outline the basis for a program of capital improvements to improve transportation service to the overall project area.</p>																		
Project Sponsor / Participating Agencies:		Funding Sources:																
Sponsor: CNYRPDB Participating Agencies: SMTC, CSX, Town of DeWitt, SMTC Member Agencies, Other Agencies as Appropriate		<table border="1"> <thead> <tr> <th></th> <th><u>2008-2009</u></th> <th><u>2009-2010</u></th> </tr> </thead> <tbody> <tr> <td>FHWA (PL)</td> <td>\$ 90,000</td> <td>\$ 58,500</td> </tr> <tr> <td>FTA (Sec. 5303)</td> <td>\$ 10,000</td> <td>\$ 6,500</td> </tr> <tr> <td>TOTAL</td> <td>UNSPENT</td> <td>\$ 65,000</td> </tr> <tr> <td></td> <td colspan="2">\$ 65,000</td> </tr> </tbody> </table>			<u>2008-2009</u>	<u>2009-2010</u>	FHWA (PL)	\$ 90,000	\$ 58,500	FTA (Sec. 5303)	\$ 10,000	\$ 6,500	TOTAL	UNSPENT	\$ 65,000		\$ 65,000	
	<u>2008-2009</u>	<u>2009-2010</u>																
FHWA (PL)	\$ 90,000	\$ 58,500																
FTA (Sec. 5303)	\$ 10,000	\$ 6,500																
TOTAL	UNSPENT	\$ 65,000																
	\$ 65,000																	

PROJECT NO:	3H																
PROJECT TITLE:	University Hill Bike Network Project																
OBJECTIVE: To complete a recommendation of the University Hill Transportation Study relating to the creation of a bike network in the University Hill area.																	
METHODOLOGY: <p>The project will examine the Bike Network routes recommended in the University Hill Transportation Study and develop a proposed network to utilize existing urban roadways to provide a hybrid of bicycle lanes, shared roadways and traffic calming to create a grid of streets that encourage daily use of bicycles for urban transportation.</p> <p><i>WORK COMPLETED IN 2008-2009 PROGRAM CYCLE</i></p>																	
END PRODUCT: A recommended network of streets and treatments for those streets that will allow the City of Syracuse to enhance the University Hill area in terms of bicycle access and utility.																	
Project Sponsor / Participating Agencies:		Funding Sources:															
Sponsor: City of Syracuse Participating Agencies: SMTC, MDA, City of Syracuse, other Agencies as appropriate		<table border="1"> <thead> <tr> <th></th> <th><u>2008-2009</u></th> <th><u>2009-2010</u></th> </tr> </thead> <tbody> <tr> <td>FHWA (PL)</td> <td>\$ 35,000</td> <td>\$ 0</td> </tr> <tr> <td>FTA (Sec. 5303)</td> <td>\$ 0</td> <td>\$ 0</td> </tr> <tr> <td>TOTAL</td> <td>\$ 35,000</td> <td>\$ 0</td> </tr> <tr> <td></td> <td colspan="2">\$ 35,000</td> </tr> </tbody> </table>		<u>2008-2009</u>	<u>2009-2010</u>	FHWA (PL)	\$ 35,000	\$ 0	FTA (Sec. 5303)	\$ 0	\$ 0	TOTAL	\$ 35,000	\$ 0		\$ 35,000	
	<u>2008-2009</u>	<u>2009-2010</u>															
FHWA (PL)	\$ 35,000	\$ 0															
FTA (Sec. 5303)	\$ 0	\$ 0															
TOTAL	\$ 35,000	\$ 0															
	\$ 35,000																

PROJECT NO:	3I		
PROJECT TITLE:	Downer Street Corridor Study		
OBJECTIVE: <p>To complete a transportation study for the Downer Street corridor in the Town of Van Buren and Village of Baldwinsville that will examine transportation and mobility conditions and issues. The study will also involve a land use analysis in terms of examining the transportation and land use connection in the study area, how these factors currently impact each other, and how to best plan for future interactions of the transportation and land use in the study area.</p>			
METHODOLOGY: <p>Due to a mix of increasingly intensive commercial and residential growth combined with commuter through traffic, the Downer Street Corridor (between NYS 690 and Canton Street in the Village of Baldwinsville) is perceived by the Town of Van Buren to be suffering from issues relating to access, the impacts of existing and expected development, mobility, safety, and other related concerns. To that end, a corridor study has been undertaken to examine the existing conditions, issues, and possible alternatives for improving the current situation along the corridor. The study will focus on the transportation and mobility needs of the corridor and surrounding area as well as examine the land use and transportation connections within the area.</p> <p>This study begun in the 2007-2008 program year and is underway. It is expected to be completed in the 2008-2009 program year. This will be a consultant led study.</p> <p style="text-align: center;"><i>WORK COMPLETED IN 2008-2009 PROGRAM CYCLE</i></p>			
END PRODUCT: <p>This project will result in various Technical Memorandums and a Final Report.</p>			
Project Sponsor / Participating Agencies:		Funding Sources:	
Sponsor: Town of Van Buren Participating Agencies: SMTC, Town of Van Buren, Village of Baldwinsville, SMTC Member Agencies, Other Agencies as Appropriate.			
		<div> <div>2008-2009</div> <div>2009-2010</div> </div>	
		<div> <div>FHWA (PL)</div> <div>\$ 73,800</div> </div>	<div> <div>\$</div> </div>
		<div> <div>FTA (Sec. 5303)</div> <div>\$ 8,200</div> </div>	<div> <div>\$</div> </div>
		<div> <div>TOTAL</div> <div>\$82,000</div> </div>	<div> <div>\$</div> </div>
			<div> <div>\$ 82,000</div> </div>

PROJECT NO:	3J																				
PROJECT TITLE:	Emergency Travel Study																				
OBJECTIVE: <p>To develop an integrated emergency transportation and travel management plan to coordinate the responses of transportation departments, traffic management, transit providers, emergency communications, and public information in the event of natural or other community disasters for Onondaga County.</p>																					
METHODOLOGY: <p>This multi-year task will entail the preparation and wide dissemination of information necessary for management of travel demand related communications during emergency events. This project will be a collaborative effort, not only by SMTC member agencies, but also including the NY State Emergency Management Office, as well as carefully targeted participation for those public, private and non-profit departments and agencies with responsibilities for traffic management and public health and safety during emergencies in Onondaga County.</p> <p>The work products will include GIS databases of the transportation system and transit resources and routes tailored to needs of first responders and emergency management and communications authorities, as well as plans and implementation strategies and necessary capital improvements.</p> <p>It is anticipated that an RFP will be issued and a consultant will be retained in the 2008-2009 year as well as project startup. The bulk of the project however is likely to be completed in subsequent years.</p> <p><i>PROJECT DEFERRED TO FUTURE YEAR FOR FISCAL CONSTRAINT</i></p>																					
END PRODUCT: <p>Identification of travel resources and emergency travel routes in GIS format; procedures for management of the transportation system during response to countywide and local emergencies; plans to mitigate vulnerabilities in the transportation system; and implementation strategies.</p>																					
Project Sponsor / Participating Agencies:		Funding Sources:																			
Sponsor: Onondaga County Participating Agencies: SMTC, SMTC Member Agencies, Other Agencies as appropriate		<table border="1"> <thead> <tr> <th></th> <th><u>2008-2009</u></th> <th><u>2009-2010</u></th> </tr> </thead> <tbody> <tr> <td>FHWA (PL) CONSULT-</td> <td></td> <td>\$ 0</td> </tr> <tr> <td>FTA (Sec. 5303) ANT FUNDS</td> <td></td> <td>\$ 0</td> </tr> <tr> <td>UNSPENT</td> <td></td> <td></td> </tr> <tr> <td>TOTAL IN 2008-2009</td> <td></td> <td>\$</td> </tr> <tr> <td></td> <td></td> <td>\$0</td> </tr> </tbody> </table>			<u>2008-2009</u>	<u>2009-2010</u>	FHWA (PL) CONSULT-		\$ 0	FTA (Sec. 5303) ANT FUNDS		\$ 0	UNSPENT			TOTAL IN 2008-2009		\$			\$0
	<u>2008-2009</u>	<u>2009-2010</u>																			
FHWA (PL) CONSULT-		\$ 0																			
FTA (Sec. 5303) ANT FUNDS		\$ 0																			
UNSPENT																					
TOTAL IN 2008-2009		\$																			
		\$0																			

UPWP TASK NO:	3K		
TASK TITLE:	Environmental Justice		
OBJECTIVE: To continue to study issues relevant to environmental justice in the SMTC area. This includes examining the relationship between various socio-economic and demographic data and the transportation systems and plans in the MPO area.			
METHODOLOGY: This is an annual activity to address environmental justice issues in the MPO area by examining the relationship between various socio-economic/demographic data and the transportation systems and plans. In general, the following will be completed: <ul style="list-style-type: none">● Update target areas as necessary and as data allows;● Utilize available data sets to refine where necessary the geographic areas where the noted socio-economic and demographic conditions exist in the MPO area;● Continue to examine the existing transportation and transit system as it relates to the areas noted above;● Continue to examine the location of future transportation projects via the LRTP and the TIP, and study the correlation of these future projects to the areas noted above;● Utilize GIS and other automated tools, create maps, charts, and other relevant graphics to depict the existing and potential future conditions relevant to environmental justice; and● Facilitate Study Advisory Committee meetings that will develop goals and objectives as well as future deliverables for this project. The findings of this process should be taken into consideration for future transportation planning and capital projects in the MPO area.			
END PRODUCT: Continued effort in the Environmental Justice arena to further the MPO’s progress in meeting federal requirements.			
Project Sponsor / Participating Agencies:		Funding Sources:	
Sponsor: SMTC Participating Agencies: SMTC, CNYRPDB, CNYRTA, City of Syracuse, NYSDOT, OCDOT, and SOCPA			

UPWP TASK NO:	3L																				
TASK TITLE:	I-81 Public Participation Project																				
OBJECTIVE: <p>To facilitate a public participation effort in conjunction with NYSDOT's I-81 Corridor Study.</p>																					
METHODOLOGY: <p>This multi-year project is linked to the NYSDOT's I-81 Corridor Study as well as the SMTC's I-81 Travel Demand Modeling Project. The major components of the project are:</p> <ol style="list-style-type: none"> 1. Outreach and education to inform the public about the corridor; its role, function, outlook, and general condition; and the existing conditions of adjacent areas impacted by it; 2. Education to inform the public about the various planning processes that currently surround the corridor; 3. A public involvement process to gather input on issues/concerns related to I-81 and its environs; and 4. A public involvement process to garner public opinion regarding the future alternatives for the roadway in this area. <p>The results of this project will be used as input for the SMTC's technical work on the I-81 modeling effort (a related, but separate Scope of Work). These two products, along with substantial additional technical analysis done by the NYSDOT, will form the foundation for NYSDOT's greater I-81 corridor study, which will make the final determination regarding the future of I-81. NYSDOT's study is funded via FHWA State Planning and Research (SPR) funding and the SMTC (and its member agencies) will be key stakeholders of the NYSDOT effort. In addition, the final determination of the NYSDOT study will ultimately be manifested as a Transportation Improvement Program (TIP) project, which will require approval and concurrence by all SMTC member agencies.</p> <p>----- 2009 - 2010 UPDATE -----</p> <p>A consultant team has been retained and a preliminary SAC established. This project is closely coordinated with the NYSDOT's SPR funded corridor study and the SMTC's Travel Demand Modeling study. Outreach will begin in earnest in 2009 - 2010.</p>																					
END PRODUCT: <p>A documented public involvement process relating to the future of the I-81 Corridor in the MPO area and participation in the NYSDOT SPR funded I-81 corridor study.</p>																					
Project Sponsor / Participating Agencies:		Funding Sources:																			
Sponsor: NYSDOT Participating Agencies: SMTC, CNYRPDB, CNYRTA, City of Syracuse, NYSDOT, OCDOT, SOCPA and others as appropriate.		<table border="1"> <thead> <tr> <th></th> <th><u>2008-2009</u></th> <th><u>2009-2010</u></th> </tr> </thead> <tbody> <tr> <td>FHWA (PL)</td> <td>CONSULT-</td> <td>\$ 170,000</td> </tr> <tr> <td>FTA (Sec. 5303)</td> <td>ANT FUNDS</td> <td>\$ 30,000</td> </tr> <tr> <td></td> <td>UNSPENT</td> <td></td> </tr> <tr> <td>TOTAL</td> <td>IN 2008-2009</td> <td>\$ 200,000</td> </tr> <tr> <td></td> <td></td> <td>\$ 200,000</td> </tr> </tbody> </table>			<u>2008-2009</u>	<u>2009-2010</u>	FHWA (PL)	CONSULT-	\$ 170,000	FTA (Sec. 5303)	ANT FUNDS	\$ 30,000		UNSPENT		TOTAL	IN 2008-2009	\$ 200,000			\$ 200,000
	<u>2008-2009</u>	<u>2009-2010</u>																			
FHWA (PL)	CONSULT-	\$ 170,000																			
FTA (Sec. 5303)	ANT FUNDS	\$ 30,000																			
	UNSPENT																				
TOTAL	IN 2008-2009	\$ 200,000																			
		\$ 200,000																			

PROJECT NO:	3M		
PROJECT TITLE:	I-81 Travel Demand Modeling Project		
OBJECTIVE:			
To utilize the SMTC’s Travel Demand Model to evaluate the existing and future traffic conditions along I- 81 in the MPO area. This analysis will be performed for a variety of different potential alternatives and scenarios.			
METHODOLOGY:			
The SMTC will utilize its Travel Demand Model to evaluate different alternative planning scenarios for the I-81 Corridor in the MPO area with the goal being to demonstrate the traffic impacts/projections of those scenarios on both the state and local transportation systems. This study will be performed in such a way that preservation of the integrity of the transportation system is assured and sound mobility and reliability measures will be utilized.			
This project will be critically linked to the I-81 Public Participation Project and the NYSDOT I-81 Corridor Study.			
The major elements of this effort are to:			
<div>1. Refine the SMTC’s travel demand model in order to improve its validity, and</div> <div>2. Use the travel demand model to evaluate various potential concepts for the I-81 corridor (and permutations of those concepts), based on:</div> <div><div>- impacts to the transportation network of the greater metropolitan region and</div><div>- impacts to regional interstate access and general mobility, with an emphasis on the movement of goods and people, and with a keen awareness of regional air quality implications.</div></div>			
The results of this project will be completed in conjunction with the SMTC’s I-81 Public Participation Project (a related but separate Scope of Work). The findings of the public participation effort will be used to assist in the development of alternatives to be tested in the model, and the results of the modeling effort will be reported to the public through the Public Participation Project. These two projects, along with additional technical analysis done by the NYSDOT, will form the foundation for NYSDOT’s greater I-81 corridor study, which will make the final determination regarding the future of I-81. The SMTC will be a key stakeholder in the NYSDOT study. In addition, the final determination of the NYSDOT study will ultimately be manifested as a Transportation Improvement Program (TIP) project, which will require approval by all SMTC member agencies.			
----- 2009 - 2010 UPDATE -----			
A consultant team has been retained and a preliminary SAC established. This project is closely coordinated with the NYSDOT’s SPR funded corridor study and the SMTC’s Public Participation Project. Efforts will begin in earnest in 2009 - 2010.			
END PRODUCT:			
This project will result in a final report containing a detailed discussion and traffic analysis for the various studied alternatives.			
Project Sponsor / Participating Agencies:		Funding Sources:	
Sponsor: NYSDOT		<div><div>FHWA (PL)</div><div>FTA (Sec. 5303)</div><div>TOTAL</div></div>	
Participating Agencies: SMTC, SMTC Member Agencies, Other Agencies as Appropriate		<div><div>2008-2009 CONSULT-</div><div>2009-2010 \$ 85,000</div></div> <div><div>ANT FUNDS</div><div>\$ 15,000</div></div> <div><div>UNSPENT</div><div></div></div> <div><div>IN 2008-2009</div><div>\$ 100,000</div></div> <div><div>\$ 100,000</div></div>	

PROJECT NO:	3N		
PROJECT TITLE:	MPO Regional Planning Initiatives		
OBJECTIVE: To allow the SMTC to be actively involved in the many important regional planning initiatives that either currently exist or may begin over the program year.			
METHODOLOGY: Numerous significant planning initiatives either currently exist or may come to fruition over the coming program year. This project is to allow for the SMTC to participate in these initiatives. Additionally, member agencies may request SMTC specific planning, analysis, or related activities in regards to these initiatives via this task. Examples of past work that fall under this category include the I-90 Corridor planning, Lakefront Planning, City of Syracuse Comprehensive Planning and other related activities.			
END PRODUCT: Active SMTC participation in important regional planning initiatives.			
Project Sponsor / Participating Agencies:		Funding Sources:	
Sponsor: SMTC/Various Participating Agencies: SMTC, SMTC Member Agencies, Other Agencies as Appropriate		<u>2008-2009</u> FHWA (PL) \$ 18,000 FTA (Sec. 5303) \$ 2,000 TOTAL \$ 20,000	<u>2009-2010</u> \$ 14,250 \$ 750 \$ 15,000
		<div style="border: 1px solid black; padding: 2px; text-align: center;">\$ 35,000</div>	

PROJECT NO:	30		
PROJECT TITLE:	Long Range Transportation Plan		
OBJECTIVE: <p>Begin efforts on the new 2011 Long Range Transportation Plan (LRTP).</p>			
METHODOLOGY: <p>As required by law, each Metropolitan Planning Organization (MPO) must have a complete and up-to-date LRTP. Federal Regulations dictate that the Plan be updated a minimum of every four years. The SMTC's last complete LRTP was the <i>2020 Long Range Transportation Plan</i>, completed in 1995, with updates completed in 1998, 2001, 2004 and 2007.</p> <p>Efforts to develop the next update, which is due in 2011, are underway.</p> <p>All tasks and activities conducted as part of this project will ensure that the principles and procedures of Environmental Justice and Title VI receive the appropriate attention. Future fiscal allocations will be required to allow for continuation and completion of a new LRTP.</p>			
END PRODUCT: <p>Completion of the 2011 Long-Range Transportation Plan.</p>			
Project Sponsor / Participating Agencies:		Funding Sources:	
Sponsor: SMTC Participating Agencies: SMTC, SMTC Member Agencies, Other Agencies as Appropriate		<u>2008-2009</u> FHWA (PL) \$40,500 FTA (Sec. 5303) \$ 4,500 TOTAL \$45,000	<u>2009-2010</u> \$40,000 \$ 10,000 \$ 50,000
		<div style="border: 1px solid black; padding: 2px; text-align: center;">\$95,000</div>	

PROJECT NO:	3P																
PROJECT TITLE:	Northern MPA Planning																
OBJECTIVE: To facilitate communication among and participate with MPO member agencies, various municipal representatives and other appropriate agencies regarding transportation planning efforts, needs and issues in the northern section of the SMTC metropolitan planning area.																	
METHODOLOGY: This project began during the 2004-2005 program year and the SMTC will continue the efforts on this task through the 2008-2010 program, at a minimum. The project entails the SMTC continuing a working group committee that consists of interested stakeholders from the various municipalities in Northern Onondaga County and Southern Oswego County. This provides a forum for improved communications and coordination on transportation and land use planning. Currently, various municipalities are making good efforts at trying to address these quality of life type issues, however, it is being done individually without considering the regional implications. As the working group meets, data, knowledge and information relative to the transportation planning and land use activities, needs, and issues for the project area identified can be addressed. Proposed activities under this project include, but are not be limited to, the following: coordinating and hosting bi-monthly meetings; preparing mailings, minutes, etc. as necessary; providing research information as appropriate; and documenting the issues and concerns to this committee. The information gathered via this process will be critical to the Long Range Transportation Plan.																	
END PRODUCT: Data, knowledge and information relative to the transportation planning and land use activities, needs, and issues for the project area. The information gathered via this process will be critical to the Long Range Transportation Plan.																	
Project Sponsor / Participating Agencies:		Funding Sources:															
Sponsor: SMTC Participating Agencies: SMTC, SMTC Member Agencies, Other Agencies as Appropriate		<table border="1"> <thead> <tr> <th></th> <th><u>2008-2009</u></th> <th><u>2009-2010</u></th> </tr> </thead> <tbody> <tr> <td>FHWA (PL)</td> <td>\$ 8,550</td> <td>\$ 4,250</td> </tr> <tr> <td>FTA (Sec. 5303)</td> <td>\$ 450</td> <td>\$ 750</td> </tr> <tr> <td>TOTAL</td> <td>\$ 9,000</td> <td>\$ 5,000</td> </tr> <tr> <td></td> <td colspan="2">\$ 14,000</td> </tr> </tbody> </table>		<u>2008-2009</u>	<u>2009-2010</u>	FHWA (PL)	\$ 8,550	\$ 4,250	FTA (Sec. 5303)	\$ 450	\$ 750	TOTAL	\$ 9,000	\$ 5,000		\$ 14,000	
	<u>2008-2009</u>	<u>2009-2010</u>															
FHWA (PL)	\$ 8,550	\$ 4,250															
FTA (Sec. 5303)	\$ 450	\$ 750															
TOTAL	\$ 9,000	\$ 5,000															
	\$ 14,000																

PROJECT NO:	3Q		
PROJECT TITLE:	Operations and Integration		
OBJECTIVE: Facilitate communication among and participate with MPO member agencies.			
METHODOLOGY: The task will allow for the SMTC to facilitate communication among the various SMTC member agencies relative to System Operations and Integration, including Intelligent Transportation Systems (ITS) issues and the completed ITS Strategic Plan for the Syracuse Metropolitan Area.			
END PRODUCT: Ongoing communications regarding Systems Operations, Integration and the Intelligent Transportation Systems Strategic Plan for the Syracuse Metropolitan Area.			
Project Sponsor / Participating Agencies:		Funding Sources:	
Sponsor: SMTC Participating Agencies: SMTC, SMTC Member Agencies, Other Agencies as Appropriate		<u>2008-2009</u> FHWA (PL) \$ 9,500 FTA (Sec. 5303) \$ 500 TOTAL \$ 10,000	<u>2009-2010</u> \$ 4,250 \$ 750 \$ 5,000
		<div style="border: 1px solid black; padding: 2px; text-align: center;">\$ 15,000</div>	

PROJECT NO:	3R															
PROJECT TITLE:	Rail, Truck and Transit Planning															
OBJECTIVE: To include multi-modal transportation planning in the Metropolitan Planning Organization (MPO) process, in order to effectively address rail, truck and transit transportation issues, for moving both people and freight, as appropriate.																
METHODOLOGY: <ul style="list-style-type: none"> • Provide input and technical assistance from a multi-modal perspective to all SMTC transportation projects in order that rail, truck and transit travel are given appropriate consideration to any given SMTC project; • Conduct data collection, identify and assess existing conditions, develop and evaluate alternatives and/or prepare recommendations as required; • Identify issues of concern within the multi-modal arena for which a focused substantive transportation study may be appropriate; and • Provide staff support to multi-modal advisory committees and utilize, as appropriate, the committees as resources for providing input to specific multi-modal projects as well as multi-modal program development. <hr/> <p>Additionally, the SMTC will complete a Coordinated Public Transit-Human Services Plan. Under SAFETEA-LU, a Coordinated Public Transit-Human Services Plan for the region is required to continue eligibility for FTA funding streams. To that end, the SMTC will act as the lead agency in the coordination of this Plan. It is expected that this plan may be a multi-year effort and require input from a variety of government and community based organizations as well as require a significant Public Involvement Plan. Existing documents and plans will be examined for suitability to meet compliance and new efforts will only be undertaken where existing documents fail to meet required federal guidelines.</p> <p><i>Note - 2009 - 2010 Update: The Coordinated Public Transit-Human Services Plan was completed in the 2008 - 2009 program year.</i></p>																
END PRODUCT: Maintenance of a multi-modal component in all SMTC transportation projects, and miscellaneous technical reports and memoranda. Additionally, a Coordinated Public Transit-Human Services Planning effort that is expected to result in a new planning document.																
Project Sponsor / Participating Agencies:	Funding Sources:															
Sponsor: SMTC Participating Agencies: SMTC, CNYRTA, SMTC Member Agencies, Other Agencies as Appropriate	<table border="1"> <thead> <tr> <th></th><th><u>2008-2009</u></th><th><u>2009-2010</u></th></tr> </thead> <tbody> <tr> <td>FHWA (PL)</td><td>\$ 35,000</td><td>\$ 22,500</td></tr> <tr> <td>FTA (Sec. 5303)</td><td>\$ 15,000</td><td>\$ 7,500</td></tr> <tr> <td>TOTAL</td><td>\$ 50,000</td><td>\$ 30,000</td></tr> <tr> <td></td><td colspan="2">\$ 80,000</td></tr> </tbody> </table>		<u>2008-2009</u>	<u>2009-2010</u>	FHWA (PL)	\$ 35,000	\$ 22,500	FTA (Sec. 5303)	\$ 15,000	\$ 7,500	TOTAL	\$ 50,000	\$ 30,000		\$ 80,000	
	<u>2008-2009</u>	<u>2009-2010</u>														
FHWA (PL)	\$ 35,000	\$ 22,500														
FTA (Sec. 5303)	\$ 15,000	\$ 7,500														
TOTAL	\$ 50,000	\$ 30,000														
	\$ 80,000															

PROJECT NO:	3S																	
PROJECT TITLE:	Traffic Safety																	
OBJECTIVE: <p>To participate in various Traffic Safety initiatives as appropriate.</p>																		
METHODOLOGY: <p>Integrating safety into the transportation planning process has recently been the focus of various Federal and State initiatives and is strongly encouraged within Metropolitan Planning Organizations.</p> <p>Staff has been actively involved for many years on the Onondaga County Traffic Safety Advisory Board and these efforts will be continued.</p> <p>In addition, this task includes the participation of staff on a NYSMPO Traffic Safety Working Group that is examining various traffic safety activities utilized throughout the state and their potential use within each MPO. Also, the Working Group will reach out to other state agencies such as the Department of Motor Vehicles and the Department of Transportation to better coordinate safety planning activities between MPOs and these agencies.</p>																		
END PRODUCT: <p>Continued participation on the Onondaga County Traffic Safety Advisory Board, and increase awareness regarding various Traffic Safety issues and further integration of traffic safety into the transportation planning process.</p>																		
Project Sponsor / Participating Agencies:		Funding Sources:																
Sponsor: SMTC Participating Agencies: SMTC, SMTC Member Agencies, Other Agencies as Appropriate		<table border="1"> <thead> <tr> <th></th> <th><u>2008-2009</u></th> <th><u>2009-2010</u></th> </tr> </thead> <tbody> <tr> <td>FHWA (PL)</td> <td>\$ 11,400</td> <td>\$ 10,200</td> </tr> <tr> <td>FTA (Sec. 5303)</td> <td>\$ 600</td> <td>\$ 1,800</td> </tr> <tr> <td>TOTAL</td> <td>\$ 12,000</td> <td>\$ 12,000</td> </tr> <tr> <td></td> <td colspan="2">\$ 24,000</td> </tr> </tbody> </table>			<u>2008-2009</u>	<u>2009-2010</u>	FHWA (PL)	\$ 11,400	\$ 10,200	FTA (Sec. 5303)	\$ 600	\$ 1,800	TOTAL	\$ 12,000	\$ 12,000		\$ 24,000	
	<u>2008-2009</u>	<u>2009-2010</u>																
FHWA (PL)	\$ 11,400	\$ 10,200																
FTA (Sec. 5303)	\$ 600	\$ 1,800																
TOTAL	\$ 12,000	\$ 12,000																
	\$ 24,000																	

PROJECT NO:	3T			
PROJECT TITLE:	Transportation/Land Use Educational Outreach			
OBJECTIVE: To provide an educational outreach program intended to inform municipal officials and the general public on the relationship between transportation and land use in creating more livable communities.				
METHODOLOGY: In the previous year, an interactive CD was created for utilization by the local planning boards and related bodies. This CD is an educational tool that works to assist local planners on the importance of the transportation and land use connection. In the coming year, that initiative will be built upon and fostered. Outreach to local planning agencies will be undertaken via this item as well as improvements to the interactive CD if identified.				
END PRODUCT: Delivery of an on-going educational outreach program.				
Project Sponsor / Participating Agencies:		Funding Sources:		
Sponsor: SMTC Participating Agencies: SMTC, Other Agencies as Appropriate				
		FHWA (PL)	<u>2008-2009</u> \$ 11,400	<u>2009-2010</u> \$ 8,500
		FTA (Sec. 5303)	\$ 600	\$ 1,500
		TOTAL	\$ 12,000	\$ 10,000
			\$ 22,000	

PROJECT NO:	3U		
PROJECT TITLE:	Travel Demand Modeling		
OBJECTIVE: To improve and utilize the SMTC's Travel Demand Model in support of the planning needs of the SMTC and its member agencies.			
METHODOLOGY: This task involves the following key steps: 1) Maintenance of the existing model. This requires utilization of additional data sets and possible consultant efforts to be sure that the agency's model will meet SMTC's needs; 2) Continue training of existing staff on the best way(s) to utilize the model in support of the SMTC and its member agencies; 3) Work with the Interagency Consulting Group to ensure that the model will be accepted for the SMTC's required air quality and conformity needs; and 4) Utilization of the model in support of existing projects and member agency requests for scenario planning.			
END PRODUCT: A maintained Travel Demand Model that meets the needs of the SMTC as well as the member agencies. In addition the model must comply with federal and state requirements for air quality and conformity.			
Project Sponsor / Participating Agencies:		Funding Sources:	
Sponsor: SMTC Participating Agencies: SMTC, SMTC Member Agencies		<i>2008-2009</i> FHWA (PL) \$ 64,000 FTA (Sec. 5303) \$ 16,000 TOTAL \$ 80,000	<i>2009-2010</i> \$ 44,000 \$ 11,000 \$ 55,000
		<div style="border: 1px solid black; padding: 2px; text-align: center;">\$ 135,000</div>	

PROJECT NO:	3V																
PROJECT TITLE:	University Hill Transportation Study Phase II: Feasibility Study for Park and Ride Initiative																
OBJECTIVE: To complete a feasibility study for a park and ride initiative in the University Hill area.																	
METHODOLOGY: <p>The recently completed University Hill Transportation Study identified shared parking resources and improved transit as key items for continued growth in the University Hill area. This study's purpose is to look at a specific example of a shared parking facility with transit shuttle service to employment locations on the hill. The study will manifest itself as a feasibility study with the objective of stating if it is feasible and if so how to accomplish it cost effectively and in a timely manner.</p>																	
END PRODUCT: A documented feasibility study of a shared parking facility with transit services on University Hill in building on the recommendations of the completed University Hill Study.																	
<div style="text-align: right;"> Note: Most funds from 2008-2009 UPWP for the consultant were not spent during the program year. </div>																	
Project Sponsor / Participating Agencies:		Funding Sources:															
Sponsor: Metropolitan Development Association Participating Agencies: SMTC, CNYRTA, SMTC Member Agencies, Other Agencies as Appropriate		<table border="1"> <thead> <tr> <th></th> <th><u>2008-2009</u></th> <th><u>2009-2010</u></th> </tr> </thead> <tbody> <tr> <td>FHWA (PL)</td> <td>\$ 33,500</td> <td>\$ 44,800</td> </tr> <tr> <td>FTA (Sec. 5303)</td> <td>\$ 33,500</td> <td>\$ 11,200</td> </tr> <tr> <td>TOTAL</td> <td>\$ 71,000</td> <td>\$ 56,000</td> </tr> <tr> <td></td> <td colspan="2" style="text-align: center;">\$ 112,700</td> </tr> </tbody> </table>		<u>2008-2009</u>	<u>2009-2010</u>	FHWA (PL)	\$ 33,500	\$ 44,800	FTA (Sec. 5303)	\$ 33,500	\$ 11,200	TOTAL	\$ 71,000	\$ 56,000		\$ 112,700	
	<u>2008-2009</u>	<u>2009-2010</u>															
FHWA (PL)	\$ 33,500	\$ 44,800															
FTA (Sec. 5303)	\$ 33,500	\$ 11,200															
TOTAL	\$ 71,000	\$ 56,000															
	\$ 112,700																

PROJECT NO:	3W		
PROJECT TITLE:	University Hill Transportation Study Phase II: Feasibility Study for Short Term Transportation Recommendations		
OBJECTIVE: To complete a feasibility study for several short term transportation recommendations for the University Hill area as recommended in the University Hill Transportation Study.			
METHODOLOGY: <p>As the project sponsor for the completed University Hill Transportation Study, the City of Syracuse has requested that the Syracuse Metropolitan Transportation Council (SMTC) further three of the recommendations simultaneously from this finalized transportation study. Specifically, the City of Syracuse is interested in completing a single detailed feasibility study for the following University Hill Transportation Study recommendations:</p> <ul style="list-style-type: none"> • Installation of modern roundabouts on Almond Street as a short-term measure to improve vehicular and pedestrian traffic pending resolution of the longer-term I-81 Corridor issue; • Reconfiguration of one-way street segments to two-way street segments as detailed in the report; and • Lane narrowing of Almond Street. <p>Although there are more significant long term recommendations noted within the recently completed University Hill Transportation Study, the City of Syracuse is looking to evaluate and implement these recommendations immediately should they be determined viable through this Phase II Feasibility Study. These actions are meant as an interim step as the longer term recommendations are discussed and analyzed in the coming years.</p> <p style="text-align: center; transform: rotate(-15deg);"><i>WORK COMPLETED IN 2008-2009 PROGRAM CYCLE</i></p>			
END PRODUCT: A documented feasibility study building on the recommendations of the completed University Hill Study as it relates to short term transportation recommendations.			
Project Sponsor / Participating Agencies:		Funding Sources:	
Sponsor: City of Syracuse Participating Agencies: SMTC, SMTC Member Agencies, Other Agencies as Appropriate		FHWA (PL)	<u>2008-2009</u> \$66,000
		FTA (Sec. 5303)	<u>2009-2010</u> \$0
		TOTAL	\$88,000
		\$ 88,000	

PROJECT NO:	3X																
PROJECT TITLE:	Carrier Site Access Transportation Study																
OBJECTIVE: To develop a plan that will allow for improved public road access to a 130 acre parcel of land located on the west side of Thompson Road and Carrier Circle in the Onondaga County Town of DeWitt in the interests of economic development.																	
METHODOLOGY: <p>The CNY RPDB completed in July 2007 a site reuse plan for the Carrier Corporation campus in the Town of DeWitt. As part of this planning process, approximately 80 acres of land owned by Carrier on the west side of Thompson Road has been identified as surplus property no longer needed by Carrier to support their business operations. This property adjoins three parcels of land to the north that total approximately 50 acres. Two of these parcels are currently being actively used for commercial retail activity. The third parcel, that borders Carrier Circle, is occupied by a vacant commercial hotel building. As currently configured, the Carrier West side Thompson Road property and the three adjoining properties do not have adequate access to an organized road network that will ensure the most productive and efficient use of this property from an economic development perspective.</p> <p>To address this issue, a consultant led study will provide a detailed transportation plan for improved public road access to the entire 130 acre parcel of land along Thompson Road. This transportation plan will incorporate an interior road network that will provide for controlled access points to Thompson Road. Elements of the study will include confirmation of the project, information and data collection, preparation of alternative site development profiles, and community presentations. This project will be completed in the 2008-2009 program year.</p> <p><i>WORK COMPLETED IN 2008-2009 PROGRAM CYCLE</i></p>																	
END PRODUCT: A completed transportation study that will provide the basis for local officials to help advance the economic development of this property in a planned manner.																	
Project Sponsor / Participating Agencies:		Funding Sources:															
Sponsor: CNYRPDB Participating Agencies: SMTC, NYSDOT, SOCPA, Town of DeWitt, SMTC Member Agencies, Other Agencies as Appropriate.		<table border="1"> <thead> <tr> <th></th> <th><u>2008-2009</u></th> <th><u>2009-2010</u></th> </tr> </thead> <tbody> <tr> <td>FHWA (PL)</td> <td>\$75,000</td> <td>\$0</td> </tr> <tr> <td>FTA (Sec. 5303)</td> <td>\$ 0</td> <td>\$0</td> </tr> <tr> <td>TOTAL</td> <td>\$75,000</td> <td>\$0</td> </tr> <tr> <td></td> <td colspan="2">\$75,000</td> </tr> </tbody> </table>		<u>2008-2009</u>	<u>2009-2010</u>	FHWA (PL)	\$75,000	\$0	FTA (Sec. 5303)	\$ 0	\$0	TOTAL	\$75,000	\$0		\$75,000	
	<u>2008-2009</u>	<u>2009-2010</u>															
FHWA (PL)	\$75,000	\$0															
FTA (Sec. 5303)	\$ 0	\$0															
TOTAL	\$75,000	\$0															
	\$75,000																

PROJECT NO:	3Y			
PROJECT TITLE:	Safety Improvement Analysis			
OBJECTIVE: To further the objective of traffic safety issues and concerns in the MPO area by examining traffic incidents in the City of Syracuse and/or the County of Onondaga. This program year examines traffic incidents in both jurisdictions.				
METHODOLOGY: The first step in completing this analysis is to obtain from the New York State Department of Transportation (NYSDOT) a complete listing of all accidents within Onondaga County and the City of Syracuse for the most recent 3 year period. This data will then be presented to the sponsors so they may choose the locations for analysis. Staff will then complete a detailed analysis of each chosen location. There will be several tasks included in the analysis and shall include field investigations, collision diagrams, collision summaries, intersection diagrams, timing and phasing plans, Level of Service analysis, and recommendations. An understanding of reasons for the accident occurrences will be developed and a detailed report will be completed. Recommended improvements from this analysis will be considered by the responsible agency when developing their capital improvement program and for the purposes of requesting State and Federal transportation funds as part of the Transportation Improvement Program (TIP) development process. In addition, this task allows for the ongoing maintenance of the New York State Department of Transportation data that the SMTC utilizes for this recurring task. Maintenance of this data allows for the SMTC to be able to have a single database with historical incident data at our disposal for use on studies, projects or member agencies requests. This data may be mapped or presented in tabular format.				
END PRODUCT: A Final Report documenting the detailed analysis of the selected locations.				
Project Sponsor / Participating Agencies:		Funding Sources:		
Sponsor: City of Syracuse and Onondaga County Participating Agencies: SMTC, SMTC Member Agencies, Other Agencies as Appropriate				
		FHWA (PL)	<u>2008-2009</u> \$ 0	<u>2009-2010</u> \$ 34,000
		FTA (Sec. 5303)	\$ 0	\$ 6,000
		TOTAL	\$ 0	\$40,000
			<div style="border: 1px solid black; padding: 2px;">\$40,000</div>	

PROJECT NO:	3Z																
PROJECT TITLE:	OCDOT Signal Optimization																
OBJECTIVE: To assist the Onondaga County Department of Transportation (OCDOT) with the analysis and planning for signal optimization.																	
METHODOLOGY: This project will involve working with the OCDOT to analyze a set number of signals on an annual basis in an ongoing effort to provide for the best signal optimization possible for the OCDOT signal network. It is anticipated that this project will have a significant consultant component to it given the expertise required. This project will include the following activities at a minimum: <ul style="list-style-type: none"> • Creation of a written scope of work; • Establishment of a Study Advisory Committee; • Selection of a number or percentage of signals to be examined; • Refinement of the selection to exact signal locations; • Acquiring current signal plans, timing and phasing, etc.; • Intersection counts for the selected locations; • Analysis of the signal for optimization with the appropriate software; and • Delivery of recommended modifications to the OCDOT. It is anticipated that this request may be a recurring item from the OCDOT on an annual basis.																	
END PRODUCT: A Final Report documenting the recommended signal modifications;																	
Project Sponsor / Participating Agencies:		Funding Sources:															
Sponsor: Onondaga County Participating Agencies: SMTC, SMTC Member Agencies, Other Agencies as Appropriate		<table border="1"> <thead> <tr> <th></th> <th><u>2008-2009</u></th> <th><u>2009-2010</u></th> </tr> </thead> <tbody> <tr> <td>FHWA (PL)</td> <td>\$ 0</td> <td>\$ 45,000</td> </tr> <tr> <td>FTA (Sec. 5303)</td> <td>\$ 0</td> <td>\$</td> </tr> <tr> <td>TOTAL</td> <td>\$ 0</td> <td>\$45,000</td> </tr> <tr> <td></td> <td></td> <td>\$45,000</td> </tr> </tbody> </table>		<u>2008-2009</u>	<u>2009-2010</u>	FHWA (PL)	\$ 0	\$ 45,000	FTA (Sec. 5303)	\$ 0	\$	TOTAL	\$ 0	\$45,000			\$45,000
	<u>2008-2009</u>	<u>2009-2010</u>															
FHWA (PL)	\$ 0	\$ 45,000															
FTA (Sec. 5303)	\$ 0	\$															
TOTAL	\$ 0	\$45,000															
		\$45,000															

PROJECT NO:	3AA		
PROJECT TITLE:	SOCPA Development Guide Assistance		
OBJECTIVE: <p>To assist the Syracuse Onondaga County Planning Agency (SOCPA) with the update of a new development guide to replace the current 2010 plan.</p>			
METHODOLOGY: <p>This project will provide planning assistance to SOCPA with the intent of updating their current development guide (2010 Plan). It is anticipated that this will involve exclusively staff resources for the coming program year. Significant overlap between this project and the Long Range Transportation Plan are anticipated. This means that efforts expended on this project will directly benefit the SMTC's Long Range Transportation Plan.</p> <p>As this project is a "support project", a formal scope of work will not be created and no Study Advisory Committee is expected. Instead, staff will work directly with SOCPA in an effort to gather the information needed to support their effort, perform any required analysis, documentation, creation of reports, and/or mapping or other activities.</p> <p>At the completion of the SMTC's efforts on this project, a summary of the efforts made will be documented and presented to the SMTC's Planning and Policy Committees.</p>			
END PRODUCT: <p>Information compiled in support of SOCPA's new Development Guide in an attempt to assist the County with this important planning effort.</p>			
Project Sponsor / Participating Agencies:		Funding Sources:	
Sponsor: Onondaga County Participating Agencies: SMTC, SMTC Member Agencies, Other Agencies as Appropriate			
		<div> <div>2008-2009</div> <div>2009-2010</div> </div>	
		<div> <div>FHWA (PL)</div> <div>\$ 0</div> </div>	<div> <div>\$ 34,000</div> </div>
		<div> <div>FTA (Sec. 5303)</div> <div>\$ 0</div> </div>	<div> <div>\$ 6,000</div> </div>
		<div> <div>TOTAL</div> <div>\$ 0</div> </div>	<div> <div>\$40,000</div> </div>
			<div> <div>\$40,000</div> </div>

PROJECT NO:	3BB		
PROJECT TITLE:	Cicero Route 11 Corridor Study		
OBJECTIVE: To complete a transportation study for the Route 11 Corridor (and immedietly impacted areas) in the Town of Cicero that will examine the potential impact of transportation on the existing and future community, including land use decisions. The plan will build directly off of the recomendations in the SMTC’s Clay /Cicero Route 31 Transportation Study.			
METHODOLOGY: The town of Cicero has seen significant growth in residential and commercial sectors in recent years. As a result, the Route 11 corridor has expereinced increased traffic pressure. The combination of increased commuter traffic, multiple access points and other issues are resulting in conflicts between the competing needs for mobility, safety, access, and aesthetics along the corridor. This study will follow a similar path as was followed for the SMTC’s Clay /Cicero Route 31 Transportation Study. A buildout analysis will be completed along with recomendations for improvement in access management, mobility, transit and other critical areas. The study will include a full scoping effort, significant public outreach, and the following elements at a minimum: <ul style="list-style-type: none">• Analysis of the corridor and its infrastrucure;• Identification of the impact of a full build out of current plans on the corridor;• Identify opportunities for: safer and more efficient access, greater mobilty, improved transit services, enhanced non-motorized transportation faciltties;• Investigation into the viability of new interconnections and rear access to selected properties within the study area; and• Other activities identified during the scope creation process. This study will not begin implementation until after completion of the ongoing Clay /Cicero Route 31 Transportation Study. This study is anticipated to be a multi-year effort.			
END PRODUCT: This project will result in various Technical Memorandums and a Final Report with recommendations to enhance and protect the corridor.			
Project Sponsor / Participating Agencies:			
Funding Sources:			
Sponsor: Onondaga County Participating Agencies: SMTC, SMTC Member Agencies, Other Agencies as Appropriate	FHWA (PL)	2008-2009 \$ 0	2009-2010 \$ 42,500
	FTA (Sec. 5303)	\$ 0	\$ 7,500
	TOTAL	\$ 0	\$40,000
		\$50,000	

PROJECT NO:	3CC																
PROJECT TITLE:	East Genesee Street Sidewalk Study																
OBJECTIVE: To complete a transportation study for East Genesee Street from East Ave. toward the City Line and along Meadowbrook Road from Hurlburt to Kimber. The purpose and scope of the study is limited to examining the feasibility and necessity of installing sidewalks along the mentioned corridor.																	
METHODOLOGY: The purpose of this project is to determine the feasibility of establishing sidewalks on East Genesee Street from East Ave. towards the City Line and along Meadowbrook Road from Hurlburt to Kimber. Due to the needs of residents, schools, and other factors there exists a high number of pedestrians in this vicinity without many current pedestrian accommodations. This study will examine the viability and necessity of installing sidewalks on all or part of the indicated area and include gross order of magnitude cost estimates. The main activities to be included are: <ul style="list-style-type: none"> • An examination of the current pedestrian activity in the area; • An inventory of the current transportation facilities (all modes); • Determine probable alignments and alternatives for a sidewalk; • Determine costs of Right of Way acquisition if required; • Determine cost of construction; • Examination (if practical) of the effects on existing infrastructure (e.g. utility lines, fences, etc.) and natural resources (trees, foliage, etc.) and the costs/necessity of removing and/or relocating these items; and • An effective public outreach campaign. This project is expected to be completed in approximately 12 months.																	
END PRODUCT: This project will result in a Final Report with recommendations as to the feasibility and need for a sidewalk in the area along with gross order of magnitude cost estimates.																	
Project Sponsor / Participating Agencies:		Funding Sources:															
Sponsor: City of Syracuse Participating Agencies: SMTC, SMTC Member Agencies, Other Agencies as Appropriate		<table border="1"> <thead> <tr> <th></th> <th><u>2008-2009</u></th> <th><u>2009-2010</u></th> </tr> </thead> <tbody> <tr> <td>FHWA (PL)</td> <td>\$ 0</td> <td>\$ 24,000</td> </tr> <tr> <td>FTA (Sec. 5303)</td> <td>\$ 0</td> <td>\$ 6,000</td> </tr> <tr> <td>TOTAL</td> <td>\$ 0</td> <td>\$30,000</td> </tr> <tr> <td></td> <td></td> <td>\$30,000</td> </tr> </tbody> </table>		<u>2008-2009</u>	<u>2009-2010</u>	FHWA (PL)	\$ 0	\$ 24,000	FTA (Sec. 5303)	\$ 0	\$ 6,000	TOTAL	\$ 0	\$30,000			\$30,000
	<u>2008-2009</u>	<u>2009-2010</u>															
FHWA (PL)	\$ 0	\$ 24,000															
FTA (Sec. 5303)	\$ 0	\$ 6,000															
TOTAL	\$ 0	\$30,000															
		\$30,000															

PROJECT NO:	3DD			
PROJECT TITLE:	Transportation Demand Management for Downtown Syracuse			
OBJECTIVE: To complete a Transportation Demand Management Plan for downtown Syracuse. The goal of the plan is to reduce parking demand in the downtown area by fostering transportation alternatives to residents, employees, visitors, and others. Particular emphasis will be placed on the area of the proposed new Centro Common Center and its potential and impacts.				
METHODOLOGY: The purpose of this project is complete a Transportation Demand Management (TDM) Plan for downtown Syracuse. A simple definition for Transportation Demand Management (TDM) is the application of strategies and policies to reduce automobile travel demand, or to redistribute this demand in space or in time. The goal of the plan is to reduce parking demand in the downtown area by fostering transportation alternatives to residents, employees, visitors, and others. Particular emphasis will be placed on the area of the proposed new Centro Common Center and its potential and impacts. This project is a direct result of the City of Syracuse’s Downtown Parking Study. This project will be multi-year in nature and phased by design. The details of the individual project phases will be examined as part of the initial scope of work creation. The main activities to be included are at a minimum: <ul style="list-style-type: none">• A comprehensive scope of work that includes phasing and a multi-year approach;• Identify specific TDM strategies that can work for downtown Syracuse;• Identify agencies currently suporting TDM related programs;• Identify how such a TDM plan can function in the Syracuse area;• Provide relevant case study reports that can be used for best practices for emulation opportunities;• Provide site specific recommendations if possible for both existing and future transit transfer sites and options as well as their highest/best use; and• An effective public outreach campaign. This project is expected to be completed over the course of multiple program years in phases.				
END PRODUCT: Ultimately a detailed TDM plan for downtown Syracuse with an implementation strategy.				
Project Sponsor / Participating Agencies:		Funding Sources:		
Sponsor: Metropolitan Development Association Participating Agencies: SMTC, SMTC Member Agencies, Other Agencies as Appropriate		FHWA (PL)	2008-2009 \$ 0	2009-2010 \$ 60,000
		FTA (Sec. 5303)	\$ 0	\$ 15,000
		TOTAL	\$ 0	\$75,000
		\$75,000		

PROJECT NO:	3EE			
PROJECT TITLE:	Clay Three Rivers Access Study			
OBJECTIVE: To complete a study that examines comprehensive multimodal access to and within the Three Rivers Point area.				
METHODOLOGY: <p>This project is an outgrowth of the Town of Clay's Local Waterfront Revitalization Plan. The study will examine the transportation impacts from the potential redevelopment. The focus of the study will be on multi-modal access to and within the site. Alternatives that minimize vehicular access while maximizing transit, pedestrian and bicycle access are to be identified.</p> <p>Some specific elements of this project are:</p> <ul style="list-style-type: none"> • A comprehensive scope of work that includes an effective public outreach campaign; • Data collection and analysis in support of the project; • Analysis of existing and future conditions as well as no build alternatives (including traffic operations analysis); • Reuse analysis with various alternative access scenarios; • Identifications of costs and funding options for any recommended actions; and • Detailed project documentation. <p>This project is expected to be completed over the course of one program year.</p>				
END PRODUCT: Ultimately a detailed Final Report with a preferred alternative(s) and recommendations with funding strategies.				
Project Sponsor / Participating Agencies:		Funding Sources:		
Sponsor: Town of Clay Participating Agencies: SMTC, SMTC Member Agencies, Other Agencies as Appropriate		FHWA (PL)	<u>2008-2009</u> \$ 0	<u>2009-2010</u> \$ 49,500
		FTA (Sec. 5303)	\$ 0	\$ 5,500
		TOTAL	\$ 0	\$55,000
		<div style="border: 1px solid black; padding: 2px; text-align: center;">\$55,000</div>		

PROJECT NO:	3FF																
PROJECT TITLE:	CNYRTA Transit Initiative Study																
OBJECTIVE: To begin the process of examining additional modes of mass transit for the SMTC area, particularly connecting the University Hill area with downtown and beyond. Modes to be examined include Bus Rapid Transit, Fixed Rail options, and others.																	
METHODOLOGY: <p>Recent planning initiatives at the SMTC and at other area agencies have begun leaning toward alternative transit options as suggested options for enhancing the area's transportation system. The University Hill Transportation Study recently completed by the SMTC specifically recommended the examination of a street car system or bus rapid transit system to connect the University Hill area with downtown and beyond.</p> <p>CNYRTA wants to determine if the considerable expense required of the mandated FTA New Starts Alternatives Analysis process is warranted and useful. To that end, this project is being instituted as the first phase of a multi phase project that may or may not lead to a New Starts analysis by CNYRTA pending the review of the outcomes of this project.</p> <p>At a minimum some specific elements of this project are:</p> <ul style="list-style-type: none"> • A comprehensive scope of work that includes an effective public outreach campaign; • Identification of specific corridors needing transit systems improvement; • Suggest specific alignments (planning level) based on various planning factors; • Identification of modes to be examined and pros and cons of each with cost estimates; • Improved regional travel demand model that can perform this required analysis; and • Determine if further study and investment is warranted. <p>This project is expected to be completed over the course of multiple program years in multiple phases.</p>																	
END PRODUCT: Ultimately a detailed Final Report with a recommendation if further investment is warranted.																	
Project Sponsor / Participating Agencies:		Funding Sources:															
Sponsor: CNYRTA Participating Agencies: SMTC, SMTC Member Agencies, Other Agencies as Appropriate		<table border="1"> <thead> <tr> <th></th> <th><u>2008-2009</u></th> <th><u>2009-2010</u></th> </tr> </thead> <tbody> <tr> <td>FHWA (PL)</td> <td>\$ 0</td> <td>\$ 69,000</td> </tr> <tr> <td>FTA (Sec. 5303)</td> <td>\$ 0</td> <td>\$ 17,000</td> </tr> <tr> <td>TOTAL</td> <td>\$ 0</td> <td>\$85,000</td> </tr> <tr> <td></td> <td></td> <td>\$85,000</td> </tr> </tbody> </table>		<u>2008-2009</u>	<u>2009-2010</u>	FHWA (PL)	\$ 0	\$ 69,000	FTA (Sec. 5303)	\$ 0	\$ 17,000	TOTAL	\$ 0	\$85,000			\$85,000
	<u>2008-2009</u>	<u>2009-2010</u>															
FHWA (PL)	\$ 0	\$ 69,000															
FTA (Sec. 5303)	\$ 0	\$ 17,000															
TOTAL	\$ 0	\$85,000															
		\$85,000															

PROJECT NO:	3GG		
PROJECT TITLE:	Prospect Hill Parking and Transportation Study		
OBJECTIVE: <p>To build on and leverage the existing “Prospect Hill Medical District Study” in regard to parking and transportation needs in the Prospect Hill area.</p>			
METHODOLOGY: <p>This study will build on and leverage the existing “Prospect Hill Medical District Study” in regard to parking and transportation needs in the Prospect Hill area. It will concentrate on two strong themes:</p> <ol style="list-style-type: none"> 1) The necessity to redevelop excessive surface parking lots to higher and better uses and 2) The need to influence transportation patterns of employees, residents and visitors of the area. <p>The project will be scoped out after the final completion of the Prospect Hill Medical District Study (expected in Spring 2009). At a minimum it should include:</p> <ul style="list-style-type: none"> • Comprehensive public involvement process; • A comprehensive review of the anticipated “Prospect Hill Medical District Study” ; • Review of any neighborhood/community plans; • Analysis of the relevant transportation, parking, and land uses in the study area; • Consultation with relevant community partners; and • Other efforts deemed appropriate at the time of project scoping. <p>This project is expected to be completed over the course of one program year.</p>			
END PRODUCT: <p>Detailed Final Report with recommendations.</p>			
Project Sponsor / Participating Agencies:		Funding Sources:	
Sponsor: Metropolitan Development Association Participating Agencies: SMTC, SMTC Member Agencies, Other Agencies as Appropriate			
		<div>2008-2009</div> <div>FHWA (PL) \$ 0</div> <div>FTA (Sec. 5303) \$ 0</div> <div>TOTAL \$ 0</div>	<div>2009-2010</div> <div>\$ 34,000</div> <div>\$ 6,000</div> <div>\$40,000</div>
			<div>\$40,000</div>

PROJECT NO:	3HH		
PROJECT TITLE:	James Street Road Diet		
OBJECTIVE: To determine if a reduction in the number of travel lanes on James Street from Shotwell Park to the central business district is warranted and/or practical. Additionally, the study will examine the potential for installation of improved bicycle and pedestrian amenities and traffic calming measures.			
METHODOLOGY: This study will examine the viability of a reduction in the number of travel lanes on James Street from Shotwell Park to the central business district is warranted and/or practical. Additionally, the study will examine the potential for installation of improved bicycle and pedestrian amenities and traffic calming measures. In general this study will at a minimum: <ul style="list-style-type: none"> • Establish a comprehensive public participation plan; • Gather relevant traffic and community data ; • Analyze the data to determine if a lane reduction is possible; • Analyze the possible improvements of bicycle and pedestrian amenities and traffic calming measures; • Develop orders of magnitude cost estimates; and • Other efforts deemed appropriate at the time of project scoping. This project is expected to be completed over the course of one program year.			
END PRODUCT: Detailed Final Report with recommendations.			
Project Sponsor / Participating Agencies:		Funding Sources:	
Sponsor: City of Syracuse Participating Agencies: SMTC, SMTC Member Agencies, Other Agencies as Appropriate			
		2008-2009 FHWA (PL) \$ 0 FTA (Sec. 5303) \$ 0 TOTAL \$ 0	2009-2010 \$ 38,250 \$ 6,750 \$45,000
			\$45,000

UNIFIED PLANNING WORK PROGRAM

FY 2008-2010

2009 - 2010 Amendment

4. TRANSPORTATION IMPROVEMENT PROGRAM (TIP)

4A TIP Development and Maintenance

PROJECT NO:	4A																
PROJECT TITLE:	TIP Development and Maintenance																
OBJECTIVE: Maintain and update the Transportation Improvement Program (TIP). Activities for this project will also ensure that the TIP is in compliance with all federal and state requirements.																	
METHODOLOGY: The current TIP will be maintained, amended, and updated as necessary, in cooperation with the New York State Department of Transportation (NYSDOT), units of local government, and the Central New York Regional Transportation Authority (CNYRTA). Projects added will be submitted to the New York State Environmental Science Bureau (NYSDOT ESB) and the Interagency Consulting Group (ICG) to ensure consensus on impacts with the Program's conformity status. In addition, the SMTC will begin the process of developing a new TIP in the coming program cycle.																	
END PRODUCT: A Transportation Improvement Program that is maintained, kept up to date and in compliance with all Federal and State requirements.																	
Project Sponsor / Participating Agencies:		Funding Sources:															
Sponsor: SMTC Participating Agencies: SMTC, SMTC Member Agencies, Other Agencies as Appropriate		<table border="1"> <thead> <tr> <th></th> <th><u>2008-2009</u></th> <th><u>2009-2010</u></th> </tr> </thead> <tbody> <tr> <td>FHWA (PL)</td> <td>\$ 22,500</td> <td>\$ 20,000</td> </tr> <tr> <td>FTA (Sec. 5303)</td> <td>\$ 2,500</td> <td>\$ 5,000</td> </tr> <tr> <td>TOTAL</td> <td>\$ 25,000</td> <td>\$ 25,000</td> </tr> <tr> <td></td> <td colspan="2">\$ 50,000</td> </tr> </tbody> </table>		<u>2008-2009</u>	<u>2009-2010</u>	FHWA (PL)	\$ 22,500	\$ 20,000	FTA (Sec. 5303)	\$ 2,500	\$ 5,000	TOTAL	\$ 25,000	\$ 25,000		\$ 50,000	
	<u>2008-2009</u>	<u>2009-2010</u>															
FHWA (PL)	\$ 22,500	\$ 20,000															
FTA (Sec. 5303)	\$ 2,500	\$ 5,000															
TOTAL	\$ 25,000	\$ 25,000															
	\$ 50,000																

UNIFIED PLANNING WORK PROGRAM

FY 2008-2010

2009 - 2010 Amendment

5. OTHER ACTIVITIES

5A Miscellaneous Activities and Special Technical Assistance

PROJECT NO:	5A																
PROJECT TITLE:	Miscellaneous Activities and Special Technical Assistance																
OBJECTIVE: This task covers miscellaneous projects that are assigned from time to time, both short-term and infrequent long-term projects that do not warrant individual UPWP projects. Additionally, this task provides for special technical assistance to member agencies, local governments, and other agencies and/or organizations as appropriate.																	
METHODOLOGY: From time to time, miscellaneous projects are assigned to staff. Many are one time studies or reports, while other tasks are more long-term in nature, and are infrequent enough or so limited in scope of MPO participation, and therefore do not warrant a separate UPWP project. Tasks may include such activities as participation in various New York State MPO statewide initiatives, and reviewing proposed Federal regulations. This task also allows the SMTC to provide technical assistance to member agencies, local governments, and other agencies/organizations which were not foreseen or known during the preparation of the annual UPWP.																	
END PRODUCT: Various activities, technical assistance, research, analysis, published documents, memoranda, brief reports, etc., as appropriate.																	
Project Sponsor / Participating Agencies:		Funding Sources:															
Sponsor: SMTC Participating Agencies: SMTC, SMTC Member Agencies, Other Agencies as Appropriate		<table border="1"> <thead> <tr> <th></th> <th><u>2008-2009</u></th> <th><u>2009-2010</u></th> </tr> </thead> <tbody> <tr> <td>FHWA (PL)</td> <td>\$ 18,979</td> <td>\$ 15,664</td> </tr> <tr> <td>FTA (Sec. 5303)</td> <td>\$ 1,441</td> <td>\$ 3,916</td> </tr> <tr> <td>TOTAL</td> <td>\$ 20,420</td> <td>\$ 19,580</td> </tr> <tr> <td></td> <td colspan="2">\$ 40,000</td> </tr> </tbody> </table>		<u>2008-2009</u>	<u>2009-2010</u>	FHWA (PL)	\$ 18,979	\$ 15,664	FTA (Sec. 5303)	\$ 1,441	\$ 3,916	TOTAL	\$ 20,420	\$ 19,580		\$ 40,000	
	<u>2008-2009</u>	<u>2009-2010</u>															
FHWA (PL)	\$ 18,979	\$ 15,664															
FTA (Sec. 5303)	\$ 1,441	\$ 3,916															
TOTAL	\$ 20,420	\$ 19,580															
	\$ 40,000																

UNIFIED PLANNING WORK PROGRAM

FY 2008-2010

2009 - 2010 Amendment

6. BUDGET TABLES

2009-2010

TABLE 1 - SUMMARY BUDGET

TABLE 2 - SUMMARY BUDGET - FEDERAL PROGRAMS ONLY

TABLE 3 - FHWA BUDGETS

TABLE 4 - FTA BUDGETS

TABLE 5 - TOTAL FEDERAL BUDGETS

TABLE 6 - TOTAL AUDITABLE BUDGET

TABLE 1

2009 - 2010 SUMMARY BUDGET

TASK BUDGET									
TASK		FUNDING SOURCE							
ID	Category	FHWA	FTA	FTA %	Total Federal	Total Non-Federal	State	County	Total
1.	Program Administration and Support (44.21.00)								
A.	General Administration	\$202,500	\$22,500	10%	\$225,000	\$56,250	\$42,188	\$14,063	\$281,250
B.	Professional Services - Miscellaneous	\$1,260	\$240	16%	\$1,500	\$375	\$281	\$94	\$1,875
C.	Public Participation	\$21,250	\$3,750	15%	\$25,000	\$6,250	\$4,688	\$1,563	\$31,250
D.	SAFETEA-LU / Federal Legislation Adherence	\$4,250	\$750	15%	\$5,000	\$1,250	\$938	\$313	\$6,250
E.	UPWP Previous Year Closeouts	\$9,000	\$0	0%	\$9,000	\$2,250	\$1,688	\$563	\$11,250
F.	UPWP Maintenance and Development	\$8,100	\$900	10%	\$9,000	\$2,250	\$1,688	\$563	\$11,250
	Total Program Administration and Support	\$246,360	\$28,140	10%	\$274,500	\$68,625	\$51,469	\$17,156	\$343,125
2.	Short Range Transportation Planning (44.24.00)								
A.	Census Data Compilation and/or Analysis	\$4,300	\$700	14%	\$5,000	\$1,250	\$938	\$313	\$6,250
B.	Data Collection, Compilation and/or Analysis	\$27,000	\$3,000	10%	\$30,000	\$7,500	\$5,625	\$1,875	\$37,500
C.	Functional Classification System Review	\$4,000	\$0	0%	\$4,000	\$1,000	\$750	\$250	\$5,000
D.	Geographic Information Systems -SMTC	\$24,650	\$4,350	15%	\$29,000	\$7,250	\$5,438	\$1,813	\$36,250
E.	Geographic Information Systems - Member Agency Assistance	\$24,650	\$4,350	15%	\$29,000	\$7,250	\$5,438	\$1,813	\$36,250
	Total Short Range Transportation Planning	\$84,600	\$12,400	13%	\$97,000	\$24,250	\$18,188	\$6,063	\$121,250
3.	Long Range Transportation Planning (44.23.02)								
A.	Air Quality, Conformity and Energy	\$17,000	\$3,000	15%	\$20,000	\$5,000	\$3,750	\$1,250	\$25,000
B.	Air/Water Planning	\$5,000	\$0	0%	\$5,000	\$1,250	\$938	\$313	\$6,250
C.	Bicycle/Pedestrian Planning	\$20,250	\$2,250	10%	\$22,500	\$5,625	\$4,219	\$1,406	\$28,125
D.	Bridge & Pavement Condition Management System (BPCMS)	\$10,000	\$0	0%	\$10,000	\$2,500	\$1,875	\$625	\$12,500
E.	Clay/Cicero Rt. 31 Transportation Study	\$6,750	\$750	10%	\$7,500	\$1,875	\$1,406	\$469	\$9,375
F.	Congestion Management Process (CMP)	\$14,400	\$600	4%	\$15,000	\$3,750	\$2,813	\$938	\$18,750
G.	CSX Intermodal Transportation Study	\$58,500	\$6,500	10%	\$65,000	\$16,250	\$12,188	\$4,063	\$81,250
H.	University Hill Bike Network Project - Completed	\$0	\$0	0%	\$0	\$0	\$0	\$0	\$0
I.	Downer Street Corridor Study - Completed	\$0	\$0	20%	\$0	\$0	\$0	\$0	\$0
J.	Emergency Travel Study - Deferred to future year for fiscal constraint	\$0	\$0	15%	\$0	\$0	\$0	\$0	\$0
K.	Environmental Justice	\$6,375	\$1,125	15%	\$7,500	\$1,875	\$1,406	\$469	\$9,375
L.	I-81 Public Participation Project	\$170,000	\$30,000	15%	\$200,000	\$50,000	\$37,500	\$12,500	\$250,000
M.	I-81 Travel Demand Modeling Project	\$85,000	\$15,000	15%	\$100,000	\$25,000	\$18,750	\$6,250	\$125,000
N.	MPO Area Regional Planning Initiatives	\$14,250	\$750	5%	\$15,000	\$3,750	\$2,813	\$938	\$18,750
O.	Long Range Transportation Plan	\$40,000	\$10,000	20%	\$50,000	\$12,500	\$9,375	\$3,125	\$62,500
P.	Northern MPA Planning	\$4,250	\$750	15%	\$5,000	\$1,250	\$938	\$313	\$6,250
Q.	Operations & Integration	\$4,250	\$750	15%	\$5,000	\$1,250	\$938	\$313	\$6,250
R.	Rail Truck and Transit Planning	\$22,500	\$7,500	25%	\$30,000	\$7,500	\$5,625	\$1,875	\$37,500
S.	Traffic Safety	\$10,200	\$1,800	15%	\$12,000	\$3,000	\$2,250	\$750	\$15,000
T.	Transportation/Land Use Educational Outreach	\$8,500	\$1,500	15%	\$10,000	\$2,500	\$1,875	\$625	\$12,500
U.	Travel Demand Modeling	\$44,000	\$11,000	20%	\$55,000	\$13,750	\$10,313	\$3,438	\$68,750
V.	University Hill Transportation Study Phase II: Feasibility Study for Park and Ride Initiative	\$44,800	\$11,200	20%	\$56,000	\$14,000	\$10,500	\$3,500	\$70,000
W.	University Hill Transportation Study Phase II: Feasibility Study for Short Term Transportation Recommendations - Completed	\$0	\$0	25%	\$0	\$0	\$0	\$0	\$0
X.	Carrier Site Access Transportation Study - Completed	\$0	\$0	20%	\$0	\$0	\$0	\$0	\$0
Y.	Safety Improvement Analysis - City and County	\$34,000	\$6,000	15%	\$40,000	\$10,000	\$7,500	\$2,500	\$50,000
Z.	OCDOT Signal Optimization	\$45,000	\$0	0%	\$45,000	\$11,250	\$8,438	\$2,813	\$56,250
AA.	SOCPA Development Guide Assistance	\$34,000	\$6,000	15%	\$40,000	\$10,000	\$7,500	\$2,500	\$50,000
BB.	Cicero Rt. 11 Corridor Study	\$42,500	\$7,500	15%	\$50,000	\$12,500	\$9,375	\$3,125	\$62,500
CC.	East Genesee Street Sidewalk Study	\$24,000	\$6,000	20%	\$30,000	\$7,500	\$5,625	\$1,875	\$37,500
DD.	Transportation Demand Management for Downtown Syracuse	\$60,000	\$15,000	20%	\$75,000	\$18,750	\$14,063	\$4,688	\$93,750
EE.	Clay Three Rivers Access Study	\$49,500	\$5,500	10%	\$55,000	\$13,750	\$10,313	\$3,438	\$68,750
FF.	CNYRTA Transit Initiative Study	\$68,000	\$17,000	20%	\$85,000	\$21,250	\$15,938	\$5,313	\$106,250
GG.	Prospect Hill Parking and Transportation Study	\$34,000	\$6,000	15%	\$40,000	\$10,000	\$7,500	\$2,500	\$50,000
HH.	James Street Road Diet	\$38,250	\$6,750	15%	\$45,000	\$11,250	\$8,438	\$2,813	\$56,250
	Total Long Range Transportation Planning	\$1,015,275	\$180,225	15%	\$1,195,500	\$298,875	\$224,156	\$74,719	\$1,494,375
4.	Transportation Improvement Program (TIP) (44.25.00)								
A.	TIP Development & Maintenance	\$20,000	\$5,000	20%	\$25,000	\$6,250	\$4,688	\$1,563	\$31,250
	Total Transportation Improvement Program	\$20,000	\$5,000	20%	\$25,000	\$6,250	\$4,688	\$1,563	\$31,250
5.	Other Activities (44.27.00)								
A.	Miscellaneous Activities & Special Technical Assistance	\$15,664	\$3,916	20%	\$19,580	\$4,895	\$3,671	\$1,224	\$24,475
	Total Other Activities	\$15,664	\$3,916	20%	\$19,580	\$4,895	\$3,671	\$1,224	\$24,475
	Grand Total FHWA PL & FTA MPP Funds	\$1,381,899	\$229,681	14%	\$1,611,580	\$402,895	\$302,171	\$100,724	\$2,014,475
	Grand Total - All Fund Sources				\$1,611,580				\$2,014,475

TABLE 2
2009 - 2010 SUMMARY BUDGET
FEDERAL PROGRAM ONLY

TASK BUDGET											
TASK		FUNDING SOURCE					RESPONSIBILITY				
ID	Task	FHWA	FTA	State	County	Total	Staff	CNY RPDB	State	County	Total
44.21.00	Program Administration and Support	\$246,360	\$28,140	\$51,469	\$17,156	\$343,125	\$209,500	\$65,000	\$51,469	\$17,156	\$343,125
44.24.00	Short-Range Transportation Planning	\$84,600	\$12,400	\$18,188	\$6,063	\$121,250	\$97,000	\$0	\$18,188	\$6,063	\$121,250
44.23.02	Long-Range Transportation Planning	\$1,015,275	\$180,225	\$224,156	\$74,719	\$1,494,375	\$1,195,500	\$0	\$224,156	\$74,719	\$1,494,375
44.25.00	Transportation Improvement Program	\$20,000	\$5,000	\$4,688	\$1,563	\$31,250	\$25,000	\$0	\$4,688	\$1,563	\$31,250
44.27.00	Other Activities	\$15,664	\$3,916	\$3,671	\$1,224	\$24,475	\$19,580	\$0	\$3,671	\$1,224	\$24,475
	Total	\$1,381,899	\$229,681	\$302,171	\$100,724	\$2,014,475	\$1,546,580	\$65,000	\$302,171	\$100,724	\$2,014,475
		\$1,611,580		\$402,895		\$2,014,475	\$1,611,580		\$402,895		\$2,014,475

AUDIT BUDGET						
ID	Category	Staff	CNY RPDB	State	County	Total
44.20.01	Salaries	\$548,173		\$138,697		\$686,869
44.20.02	Fringe	\$185,078		\$42,606		\$227,684
44.20.03	Travel	\$9,000				\$9,000
44.20.04	Equipment	\$27,000				\$27,000
44.20.05	Supplies	\$7,500				\$7,500
44.20.06	Contractual	\$687,700	\$65,000		\$100,724	\$853,424
44.20.07	Other	\$8,699				\$8,699
44.20.08	Indirect	\$73,430		\$120,869		\$194,299
	Total	\$1,546,580	\$65,000	\$302,171	\$100,724	\$2,014,476
		\$1,611,580		\$402,895		\$2,014,475
		\$1,611,580				\$2,014,475

TABLE 3 **2009 - 2010 SUMMARY BUDGET** **FHWA BUDGET**

TASK BUDGET							
ID	Task	Total	FHWA	Staff	CNY RPDB	State	County
44.21.00	Program Administration and Support	\$307,950	\$246,360	\$188,023	\$58,337	\$46,193	\$15,398
44.24.00	Short-Range Transportation Planning	\$105,750	\$84,600	\$84,600		\$15,863	\$5,288
44.23.02	Long-Range Transportation Planning	\$1,269,094	\$1,015,275	\$1,015,275		\$190,364	\$63,455
44.25.00	Transportation Improvement Program	\$25,000	\$20,000	\$20,000		\$3,750	\$1,250
44.27.00	Other Activities	\$19,580	\$15,664	\$15,664		\$2,937	\$979
	Total	\$1,727,374	\$1,381,899	\$1,323,562	\$58,337	\$259,106	\$86,369

\$1,727,374

\$1,323,562	\$58,337	\$259,106	\$86,369
\$1,727,374			

AUDIT BUDGET						
ID	Category	Total	Staff	CNY RPDB	State	County
44.20.01	Personnel / Salaries	\$588,056	\$469,126		\$118,930	
44.20.02	Fringe	\$194,924	\$158,390		\$36,534	
44.20.03	Travel	\$7,702	\$7,702			
44.20.04	Equipment	\$23,107	\$23,107			
44.20.05	Supplies	\$6,418	\$6,418			
44.20.06	Contractual	\$733,239	\$588,533	\$58,337		\$86,369
44.20.07	Other	\$7,445	\$7,445			
44.20.08	Indirect	\$166,484	\$62,841		\$103,642	
	Total	\$1,727,374	\$1,323,562	\$58,337	\$259,106	\$86,369

\$1,727,374	\$1,323,562	\$58,337	\$259,106	\$86,369
\$1,727,374				

TABLE 4
2009 - 2010 SUMMARY BUDGET
FTA BUDGET

TASK BUDGET							
ID	Task	Total	FTA	Staff	CNY RPDB	State	County
44.21.00	Program Administration and Support	\$35,175	\$28,140	\$21,477	\$6,663	\$5,276	\$1,759
44.24.00	Short-Range Transportation Planning	\$15,500	\$12,400	\$12,400		\$2,325	\$775
44.23.02	Long-Range Transportation Planning	\$225,281	\$180,225	\$180,225		\$33,792	\$11,264
44.25.00	Transportation Improvement Program	\$6,250	\$5,000	\$5,000		\$938	\$313
44.27.00	Other Activities	\$4,895	\$3,916	\$3,916		\$734	\$245
	Total	\$287,101	\$229,681	\$223,018	\$6,663	\$43,065	\$14,355

\$287,101

\$223,018	\$6,663	\$43,065	\$14,355
\$287,101			

AUDIT BUDGET						
ID	Category	Total	Staff	CNY RPDB	State	County
44.20.01	Salaries	\$98,814	\$79,047		\$19,767	
44.20.02	Fringe	\$32,761	\$26,688		\$6,072	
44.20.03	Travel	\$1,298	\$1,298			
44.20.04	Equipment	\$3,893	\$3,893			
44.20.05	Supplies	\$1,082	\$1,082			
44.20.06	Contractual	\$120,185	\$99,167	\$6,663		\$14,355
44.20.07	Other	\$1,254	\$1,254			
44.20.08	Indirect	\$27,815	\$10,589		\$17,226	
	Total	\$287,101	\$223,018	\$6,663	\$43,065	\$14,355

\$287,101	\$223,018	\$6,663	\$43,065	\$14,355
\$287,101				

TABLE 5
2009 - 2010 SUMMARY BUDGET
TOTAL FEDERAL BUDGETS

TASK BUDGET			
ID	Task	Total Federal	Total
44.21.00	Program Administration and Support	\$274,500	\$343,125
44.24.00	Short-Range Transportation Planning	\$97,000	\$121,250
44.23.02	Long-Range Transportation Planning	\$1,195,500	\$1,494,375
44.25.00	Transportation Improvement Program	\$25,000	\$31,250
44.27.00	Other Activities	\$19,580	\$24,475
	Total	\$1,611,580	\$2,014,475

AUDIT BUDGET			
ID	Category	Total Federal	Total
44.20.01	Personnel / Salaries	\$548,173	\$686,869
44.20.02	Fringe	\$185,078	\$227,684
44.20.03	Travel	\$9,000	\$9,000
44.20.04	Equipment	\$27,000	\$27,000
44.20.05	Supplies	\$7,500	\$7,500
44.20.06	Contractual	\$752,700	\$853,424
44.20.07	Other	\$8,699	\$8,699
44.20.08	Indirect	\$73,430	\$194,299
	Total	\$1,611,580	\$2,014,475

\$1,611,580	\$2,014,475
--------------------	--------------------

TABLE 6
2009 - 2010 SUMMARY BUDGET
TOTAL AUDITABLE BUDGET

AUDIT BUDGET						
ID	Category	Total	Staff	CNY RPDB	State	County
44.20.01	Personnel / Salaries	\$686,869	\$548,173		\$138,697	
44.20.02	Fringe	\$227,684	\$185,078		\$42,606	
44.20.03	Travel	\$9,000	\$9,000			
44.20.04	Equipment	\$27,000	\$27,000			
44.20.05	Supplies	\$7,500	\$7,500			
44.20.06	Contractual	\$853,424	\$687,700	\$65,000		\$100,724
44.20.07	Other	\$8,699	\$8,699			
44.20.08	Indirect	\$194,299	\$73,430		\$120,869	
	Total	\$2,014,475	\$1,546,580	\$65,000	\$302,171	\$100,724

\$2,014,475	\$1,546,580	\$65,000	\$302,171	\$100,724
\$2,014,475				

UNIFIED PLANNING WORK PROGRAM

FY 2008-2010

2009 - 2010 Amendment

Appendices

Appendix A: Other Significant Federally Funded Transportation Planning Activities

Other Significant Federally Funded Transportation Planning Activities

In addition to the projects included in the SMTC's program a significant planning effort is being undertaken by the NYSDOT for a corridor study of I-81. This effort is being closely coordinated with the SMTC and is tied into two key SMTC efforts: The I-81 Public Participation Study and the I-81 Travel Demand Modeling Project. The following pages are excerpts from the NYSDOT's study application and serve to provide a context, cost and broad scope of the NYSDOT effort.

**NYS TRANSPORTATION PLANNING
SPR FUNDING APPLICATION
for Planning Project**

Project Manager Information

Name: Mark Frechette

Title:	Director, Planning & Program Management, Region 3
Organization:	NYSDOT
E-mail Address:	mefrechette@dot.state.ny.us
Phone Number:	(315) 428-4409
COMMITTED PROJECT MANAGER	Yes. As requested by the Regional Director Carl Ford.
<i>Is the proposed Project Manager prepared and authorized to manage the project? Explain</i>	

Applicant Information (If different from the Project Manager)

Name: Same as above

<i>Person completing this application</i>	
Title:	
Organization:	
E-mail Address:	
Phone Number:	

Project Description

Working Title for Proposal: I-81 Corridor Study & Project Scoping

Project Goal:	Investigate the need for transportation improvements to 10.69 miles of Interstate 81 between I-481/I-81 interchanges (Exits 16A & 29).
<i>Desired outcome</i>	Develop feasible project alternatives for addressing various transportation issues associated with the I-81 Viaduct in the City of Syracuse. Scoping activities will be restricted to the area of Interstate 81 between Salina/Clinton exit and Raynor Avenue (viaduct section).
Actions Proposed:	<ul style="list-style-type: none"> Corridor study of I-81
<i>Major steps in the project</i>	<ul style="list-style-type: none"> Public outreach and interaction Project scoping
Anticipated Product(s)	Corridor Study Report, Project Scoping Report (I-81 Viaduct Portion
<i>Documents /Plans /Data Base/ etc.</i>	Only)
Total Project Cost:	Syracuse I-81 Viaduct Project: 150 Million to 500 Million
SPR Funds Requested:	2 Million
Other Funds:	Region 3 has requested that SMTc utilize their Traffic Demand Model
<i>If other funds will supplement SPR funding, indicate the source of the funding and the likelihood that it will be available.</i>	to evaluate different alternative scenarios to show traffic projections to both State and local streets.

Alignment with Priority Result Areas

<i>If applicable, how will implementation of the project affect Mobility / Reliability?</i>	This section of I-81 serves at the crossroads with I-90 in the center of New York State. Protecting the integrity of the interstate system while providing sound mobility and reliability throughout the corridor is the primary purpose of this Corridor Study.
<i>If applicable, how will implementation of the project affect the Safety of the traveling public?</i>	Improve safety for those who use this transportation facility by reducing the points of conflict, correcting non-standard features, addressing capacity problems, and providing better distribution of traffic.
<i>If applicable, how will implementation of the project affect Environmental Sustainability in the State?</i>	The scoping report for the Syracuse I-81 Viaduct will lead to an Environmental Impact Statement process of various alternatives. DOT can aspire to an improved environment thru this process.
<i>If applicable, how will implementation of the project affect the Economic Competitiveness of the State?</i>	Much of Syracuse's economy as a major upstate city is a result of the transportation links within this corridor. The Central Business Districts, hospitals, universities, etc. all rely on this corridor to remain economically competitive.
<i>If applicable, how will implementation of the project affect Security of travelers, employees and NYS citizens?</i>	Addressing the various transportation issues related to I-81 in the City of Syracuse will enhance security by ensuring the functionality of this portion of the interstate system for many years into the future.

New York State Need

<i>Describe the problem, any statewide implications, and its urgency.</i>	NYSDOT is approximately 10 years away from having to address major bridge deficiencies associated with the I-81 Viaduct thru the City of Syracuse. The I-81 Corridor Study is an integral component of the decision making process that will assist NYSDOT in determining how best to move forward with this major trade, commuter, and intercity corridor.
---	---

Return on Investment

<i>Discuss how the results of the project might be used, and given funding constraints and other factors, the likelihood of the results being used.</i>	The strategies identified by the I-81 Corridor Study include an array of capital projects and operational actions that can be developed and implemented over the next 10 to 20 years to improve the corridor. The likelihood of results being used are very high due to the State's need to address multiple deficiencies within its transportation system.
---	---

Other

<i>Other pertinent information is welcomed, but not required.</i>	See attached UPWP project proposals submitted to SMTC for consideration under their work program for 2007. This project will need to be considered as a Statewide significant project in the future due to the financial commitment needed to resolve this transportation issue.
---	--

Submit Applications to: JHigle@dot.state.ny.us

Completed applications should be submitted as an attachment to an e-mail.

Questions?

Questions on how to complete this application, the review process, or the research program should be directed to Jay Higle, Policy and Strategy, (518) 457-7089.