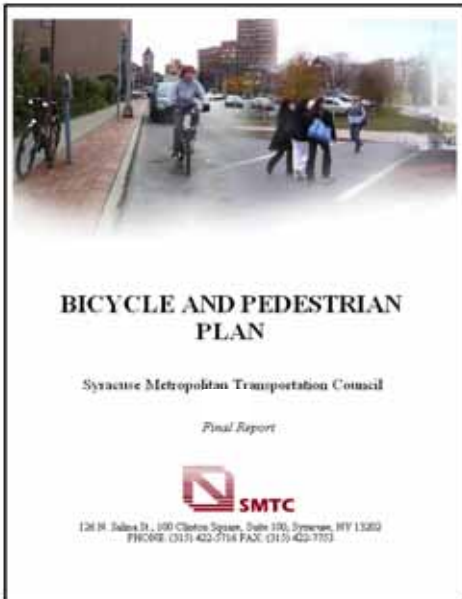


PUBLIC MEETING!

SMTC Bicycle and Pedestrian Plan – Final Report

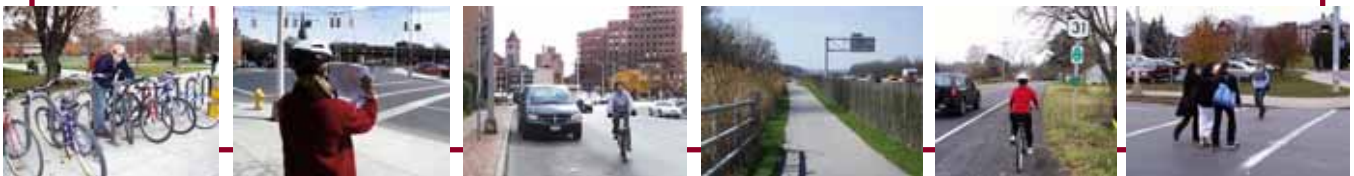


Bicycle & Pedestrian Plan PUBLIC MEETING

Wednesday, June 8, 2005 @ 6:00 PM
Onondaga Lake Park
Willow Bay Pavilion
Liverpool, NY

Map & Directions on reverse side of flyer

We Want to Inform You!



Bicycle & Pedestrian Plan Recommendations To Be Presented

The Syracuse Metropolitan Transportation Council (SMTC) recently completed its Bicycle and Pedestrian Plan for the SMTC Metropolitan Planning Organization (MPO) area. The Plan was approved by the SMTC Policy Committee on March 14, 2005. The study area included all of Onondaga County and small portions of Madison and Oswego Counties.

As a policy-level plan, the Bicycle and Pedestrian Plan puts forth policies and guidelines to shape future bicycle and pedestrian facilities and amenities within the MPO area. The report is non-location specific so that it can be applied in the various municipalities represented within the MPO region. It is the SMTC's desire that municipalities will utilize the Plan's recommendations as a starting point when addressing bicycle and pedestrian planning options within their respective communities. To download the Plan, visit www.smtcmpl.org/bike-ped.

Come learn about the Plan's outcomes and recommendations on June 8th at Onondaga Lake Park. For more information, contact the SMTC at (315) 422-5716.



Syracuse Metropolitan Transportation Council

126 N. Salina St., Suite 100, Syracuse, NY 13202, (315) 422-5716, Fax: (315) 422-7753, www.smtcmpl.org

The meeting facility is handicapped accessible. Please advise the SMTC of any specific accommodations required to facilitate your participation at this public meeting.

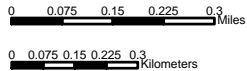


Directions: (Willow Bay parking area)
 From NY 370:
 Turn left (west) at Long Branch Road (first traffic light after crossing Thruway bridge if heading toward Baldwinsville; second traffic light after crossing Seneca River bridge if heading toward Liverpool); turn left into park. Continue under a bridge to parking area near Willow Bay Pavilion.

From I-90 and 690:
 On I-90, take thruway Exit 39 to 690 East. From 690 (east or west), take Exit 5 (John Glenn Blvd); take John Glenn Blvd north/east 0.2 mi.; turn right on Van Vleck Road (becomes Long Branch Road after it bends); turn at first right into park after crossing Outlet bridge. Continue under a bridge to parking area near Willow Bay Pavilion.






SMTC
 100 Clinton Square
 126 North Salina Street, Suite 100
 Syracuse, New York 13202
 (315) 422-5716
 Fax: (315) 422-7753
 www.smtcmapo.org



Bicycle & Pedestrian Plan Public Meeting

Map of Willow Bay Pavilion Area

-  Location of Willow Bay Pavilion
-  Onondaga Lake Park
-  Roadways

Basemap Copyrighted by NYS DOT
 Data Sources: SMTC, NYS DOT, 1999
 Prepared by SMTC, 5/2005

This map is for presentation purposes only. SMTC does not guarantee the accuracy or completeness of this map.